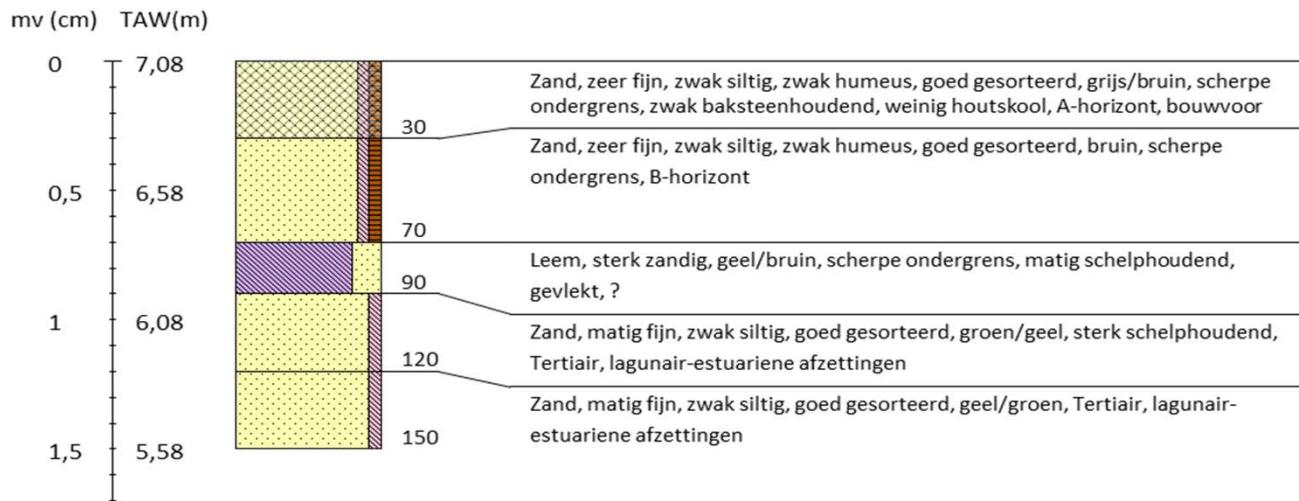
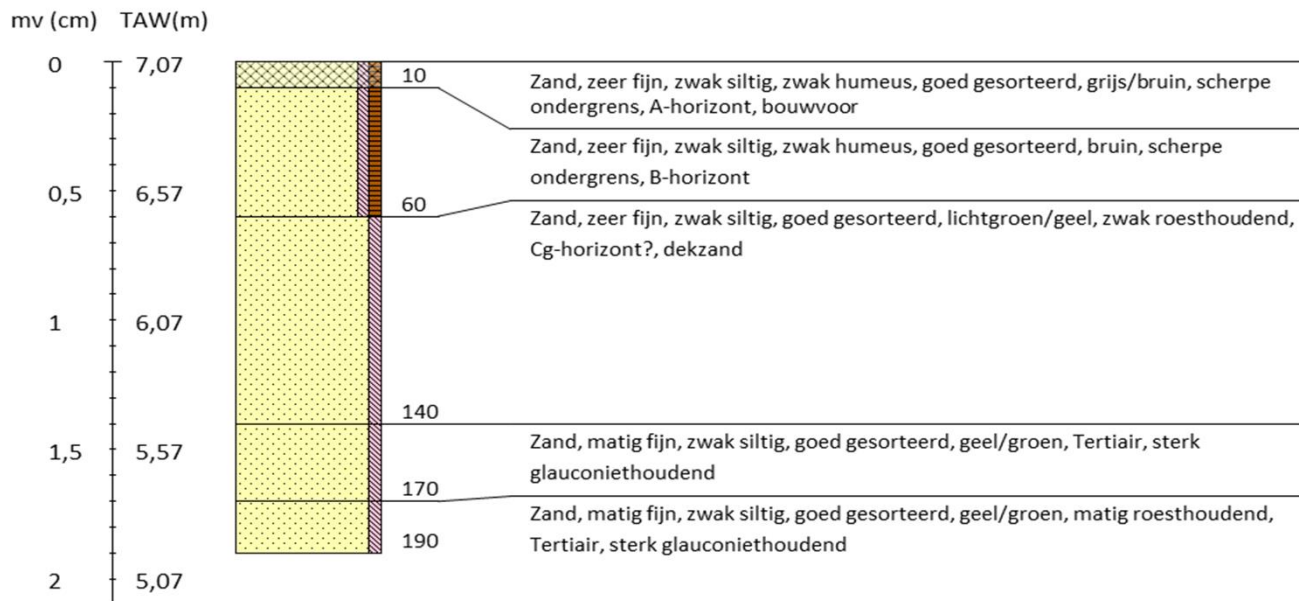


Ruggeveldlaan te Deurne

Boring 1 Lb 72-coördinaten: 158123/211962



Boring 2 Lb 72-coördinaten: 158154/211960



Ruggeveldlaan te Deurne

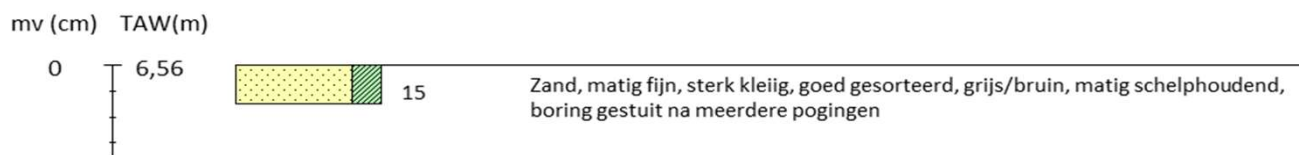
Boring 3 Lb 72-coördinaten: 158137/211936



Boring 4 Lb 72-coördinaten: 158151/211909



Boring 5 Lb 72-coördinaten: 158122/211911



Ruggeveldlaan te Deurne

Boring 6 Lb 72-coördinaten: 158091/211914



Boring 7 Lb 72-coördinaten: 158060/211915



Boring 8 Lb 72-coördinaten: 158030/211918



Ruggeveldlaan te Deurne

Boring 9 Lb 72-coördinaten: 158200/211983



Boring 10 Lb 72-coördinaten: 158170/211985



Boring 11 Lb 72-coördinaten: 158140/211987

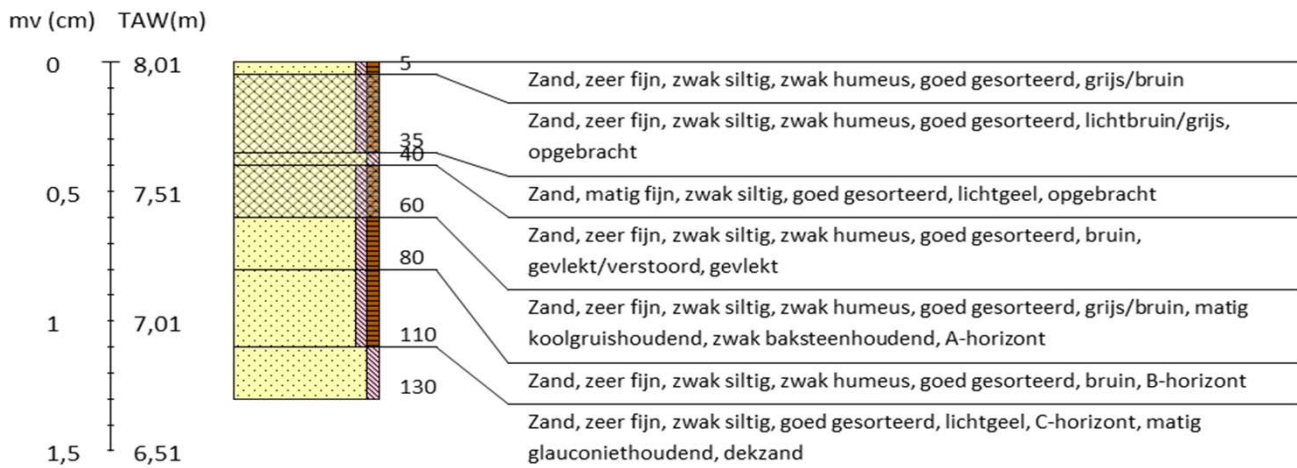


Ruggeveldlaan te Deurne

Boring 12 Lb 72-coördinaten: 158110/211989



Boring 13 Lb 72-coördinaten: 158050/211994

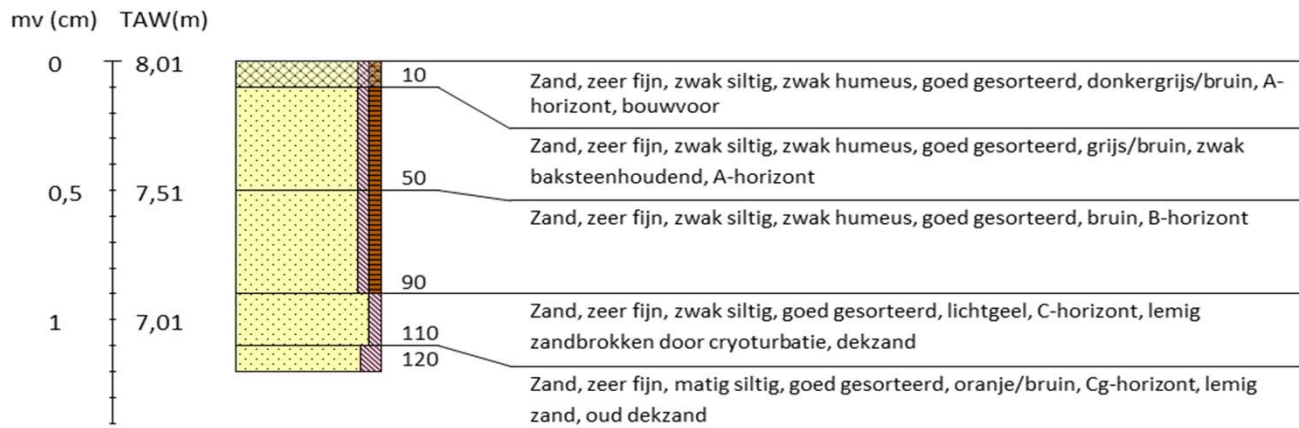


Boring 14 Lb 72-coördinaten: 158186/212008

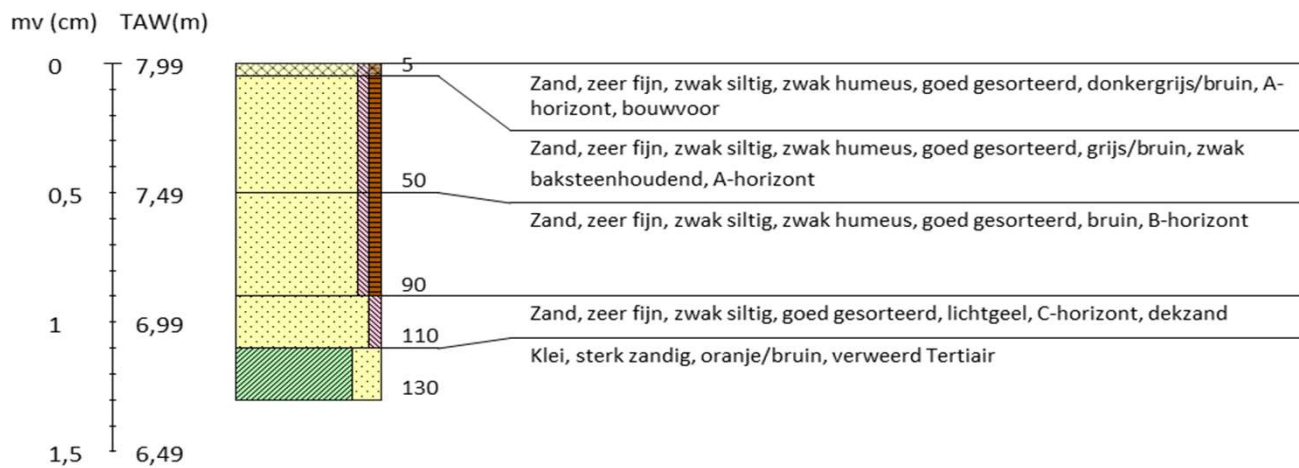


Ruggeveldlaan te Deurne

Boring 15 Lb 72-coördinaten: 158157/212011



Boring 16 Lb 72-coördinaten: 158127/212013



Ruggeveldlaan te Deurne

Boring 17 Lb 72-coördinaten: 158096/212016



Boring 18 Lb 72-coördinaten: 158173/212034



Boring 19 Lb 72-coördinaten: 158143/212037

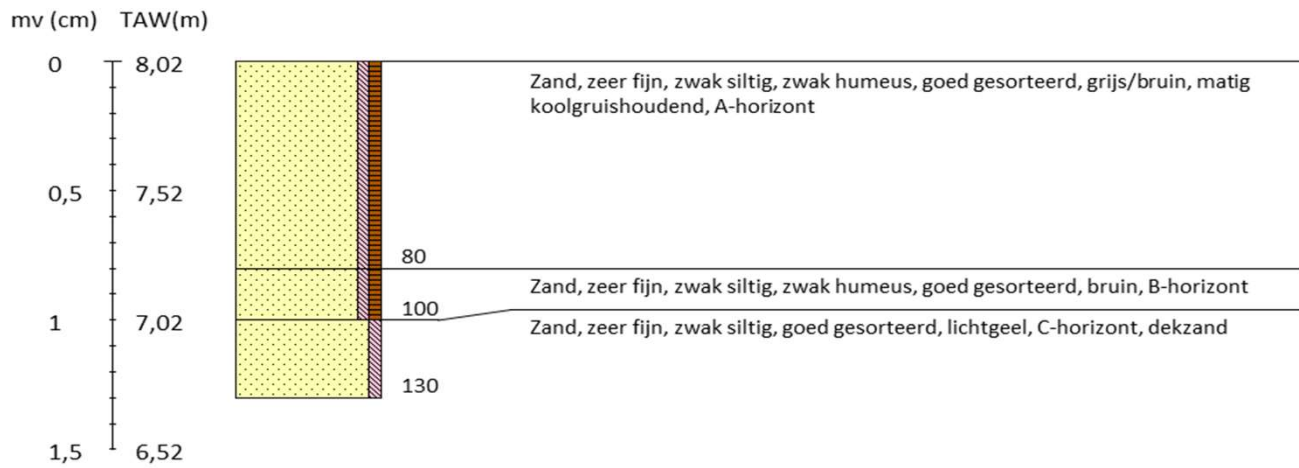


Ruggeveldlaan te Deurne

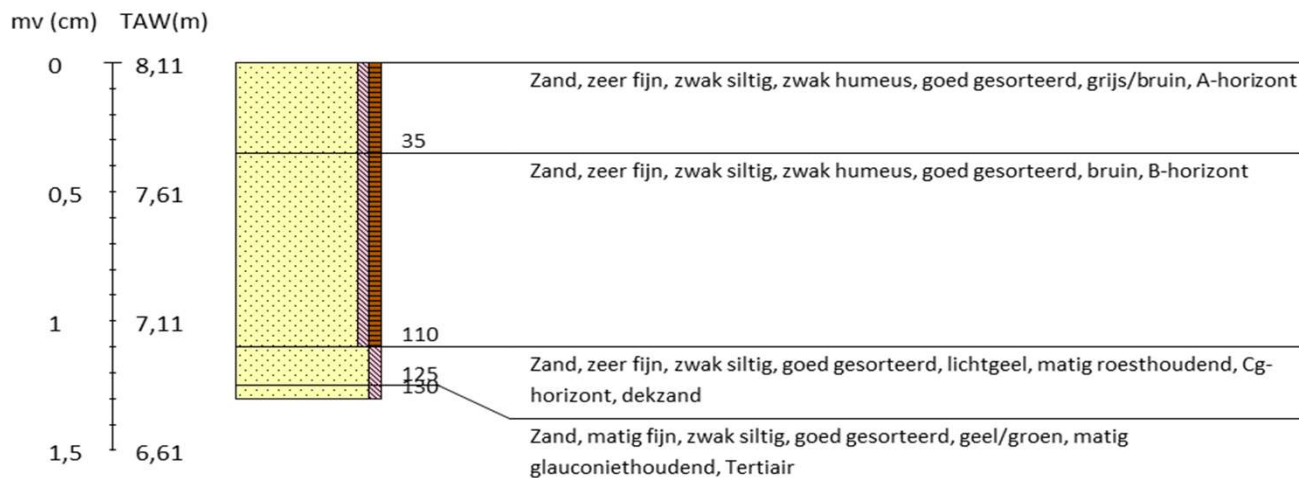
Boring 20 Lb 72-coördinaten: 158114/212039



Boring 22 Lb 72-coördinaten: 158017/211997



Boring 24 Lb 72-coördinaten: 158129/212063



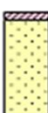
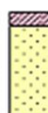































Ruggeveldlaan te Deurne

Boring 25 Lb 72-coördinaten: 158065/212017

mv (cm) TAW(m)



Legenda (conform NEN 5104, boorbeschrijvingsnorm van NITG-TNO en ASB)

Zand  Zand, zwak siltig  Zand, matig siltig  Zand, sterk siltig  Zand, uiterst siltig  Zand, kleilig	Veen  Veen, mineraalarm  Veen, zwak kleilig  Veen, sterk kleilig  Veen, zwak zandig  Veen, sterk zandig	Zandmediaan uiterst fijn < 105 µm zeer fijn 105 - < 150 µm matig fijn 150 - < 210 µm matig grof 210 - < 300 µm zeer grof 300 - < 420 µm uiterst grof 420 - < 2000 µm Zandsortering goed gesorteerd D60/D10 < 1,8 matig gesorteerd D60/D10 1,8 < 3 slecht gesorteerd D60/D10 > 3	Boortype Edelmanboor Ø 7 cm Edelmanboor Ø 10 cm Edelmanboor Ø 12 cm Edelmanboor Ø 15 cm Guts Ø 2 cm Guts Ø 3 cm Mechanische boor Ø 10 cm Mechanische boor Ø 12 cm Mechanische boor Ø 15 cm Mechanische boor Ø 20 cm
Klei  Klei, zwak siltig  Klei, matig siltig  Klei, sterk siltig  Klei, uiterst siltig  Klei, zwak zandig  Klei, matig zandig  Klei, sterk zandig	Grind  Grind, zwak zandig  Grind, matig zandig  Grind, sterk zandig  Grind, uiterst zandig  Grind, siltig	Inclusies/archeologische indicatoren (resten van planten, wortels, schelpen, wortels, hout, baksteen, puin, kolengruis, glas, aardewerk, houtskool, vuursteen, bot, fosfaat) weinig < 1% matig 1-10% veel > 10%	Mechanische boor Ø 10 cm Mechanische boor Ø 12 cm Mechanische boor Ø 15 cm Mechanische boor Ø 20 cm
Leem  Leem, zwak zandig  Leem, sterk zandig	Overige toevoegingen  zwak humeus  matig humeus  sterk humeus  zwak grindig  matig grindig  sterk grindig	Begrenzing onderliggende laag scherp overgangsgebied < 0,3 cm onscherp overgangsgebied 0,3 - < 3 cm diffuus overgangsgebied 3 cm - < 10 cm Kalkgehalte kalkloos geen opbruising, minder dan 0,5% CaCO ₃ kalkarm hoorbare opbruising, circa 0,5 - 1 à 2 % CaCO ₃ kalkrijk zichtbare opbruising, 1 à 2% CaCO ₃	Grondwaterstand GHG  GWG  GLG  @ Boorstaten - www.boorstaten.nl