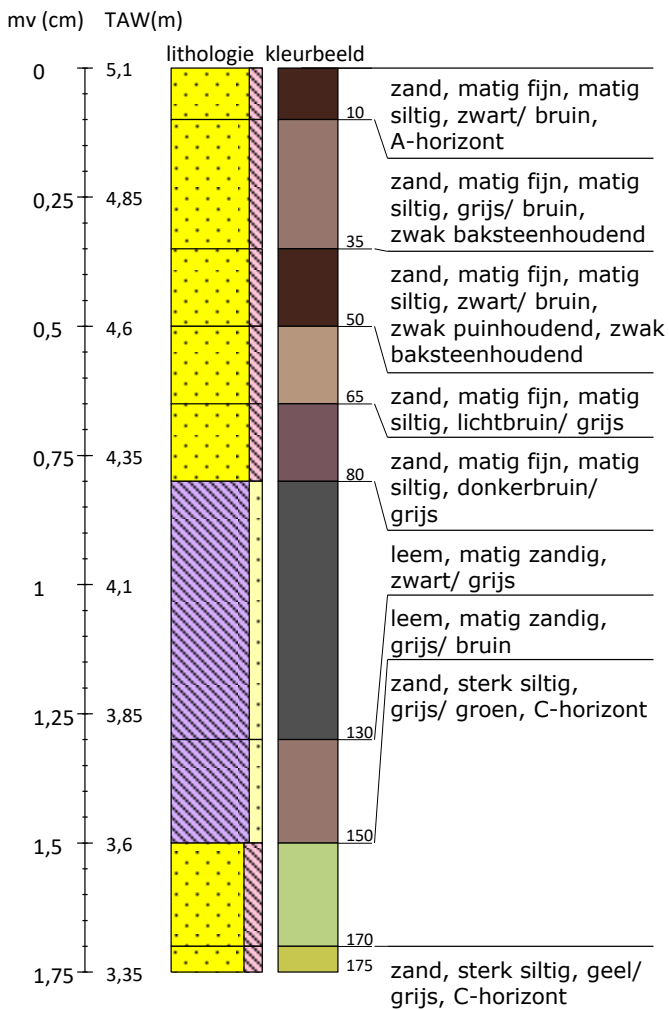
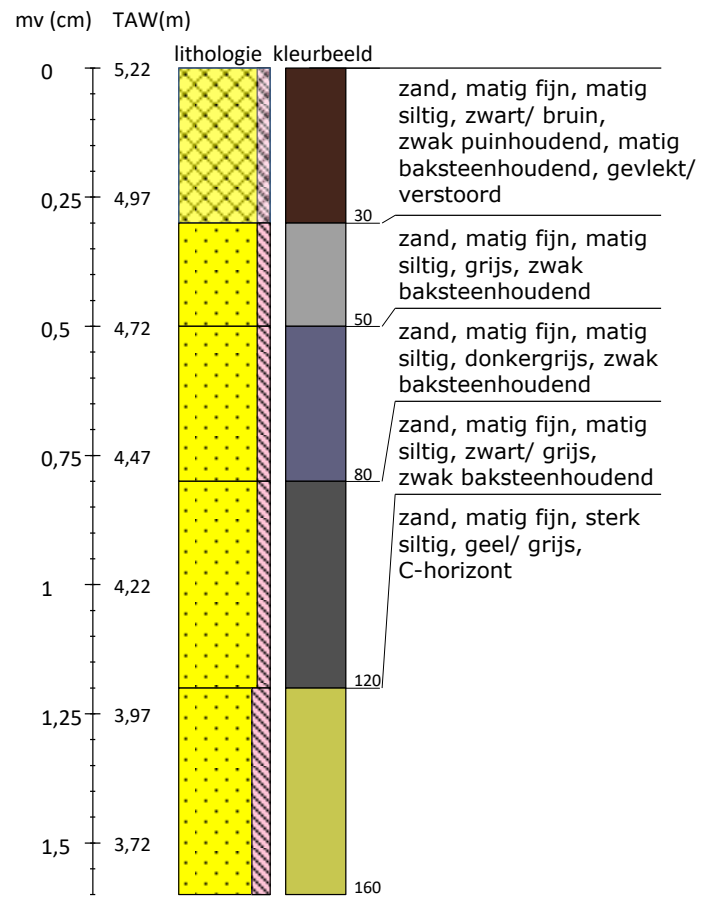


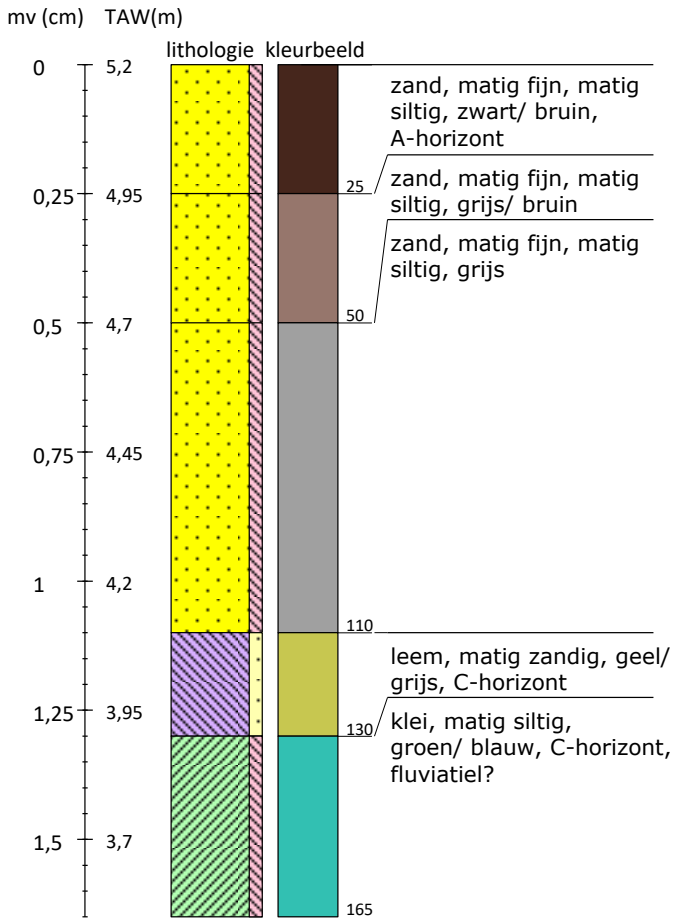
Boring 1 Lb 72-coördinaten: 143318/196125



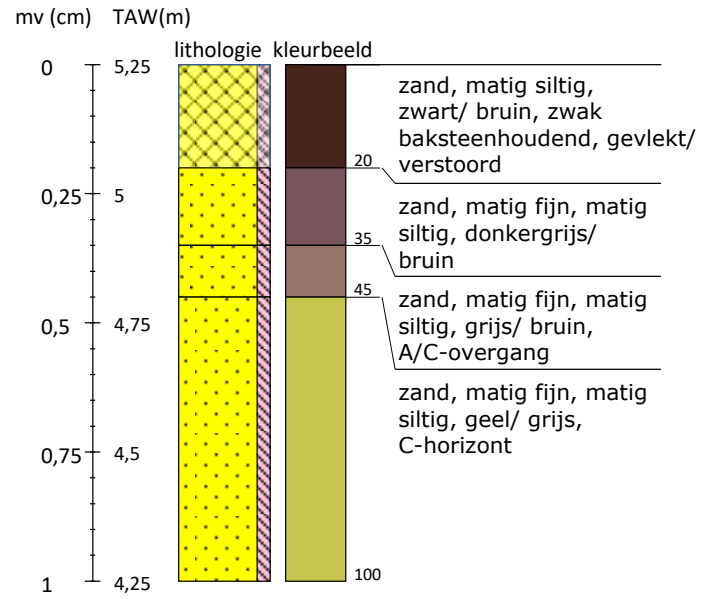
Boring 2 Lb 72-coördinaten: 143314/196100



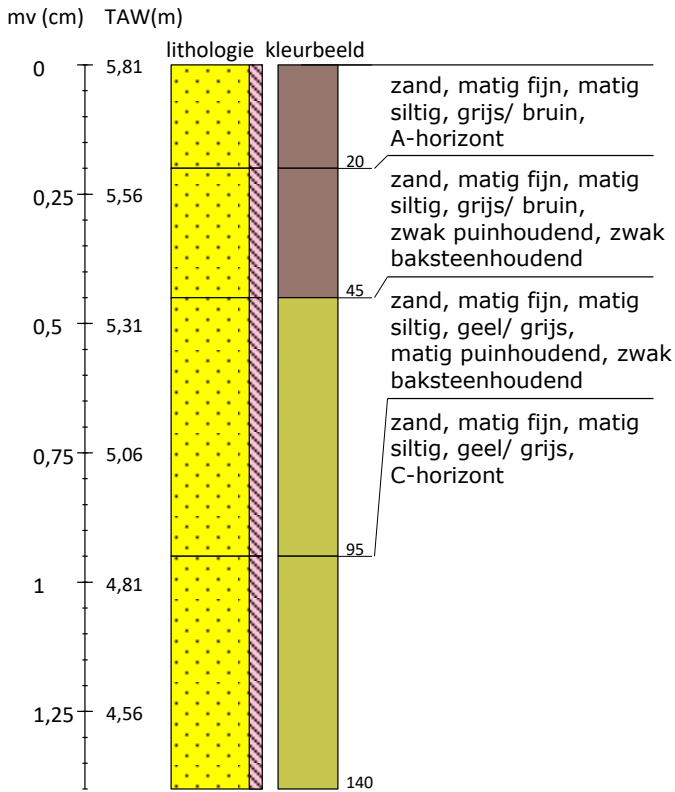
Boring 3 Lb 72-coördinaten: 143336/196089



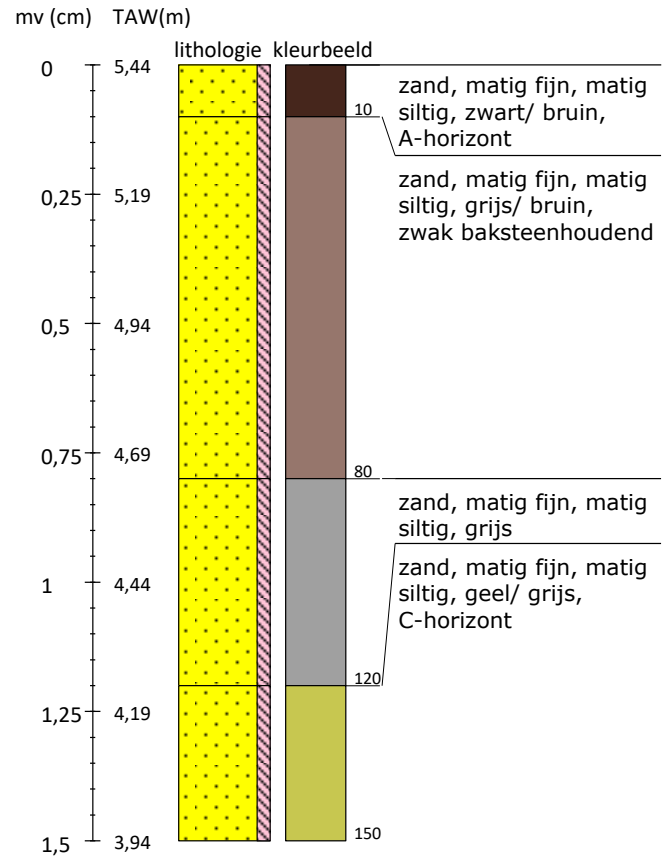
Boring 4 Lb 72-coördinaten: 143359/196078



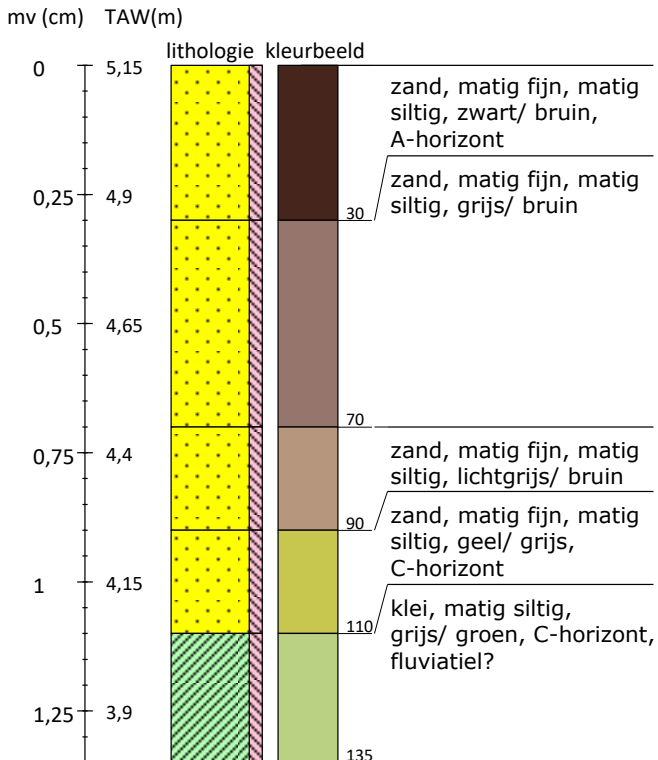
Boring 5 Lb 72-coördinaten: 143381/196066



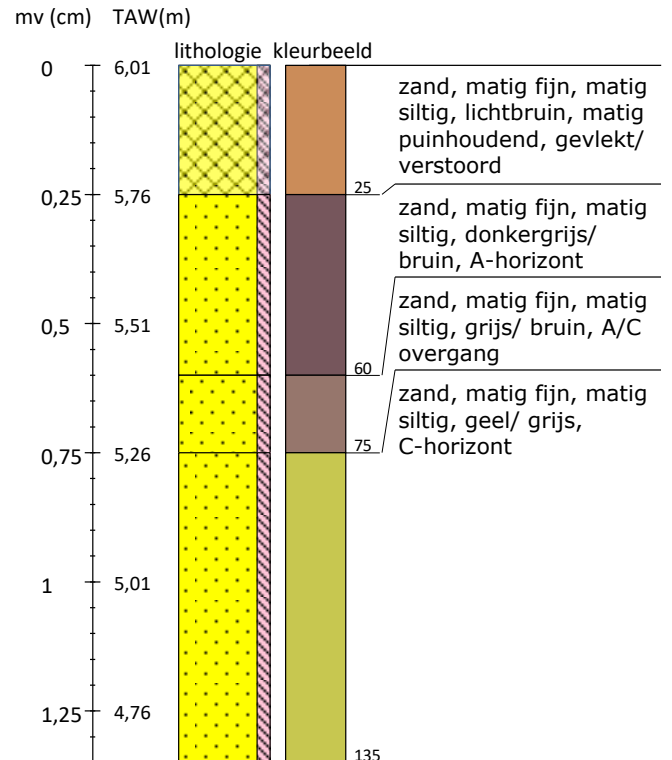
Boring 6 Lb 72-coördinaten: 143354/196052



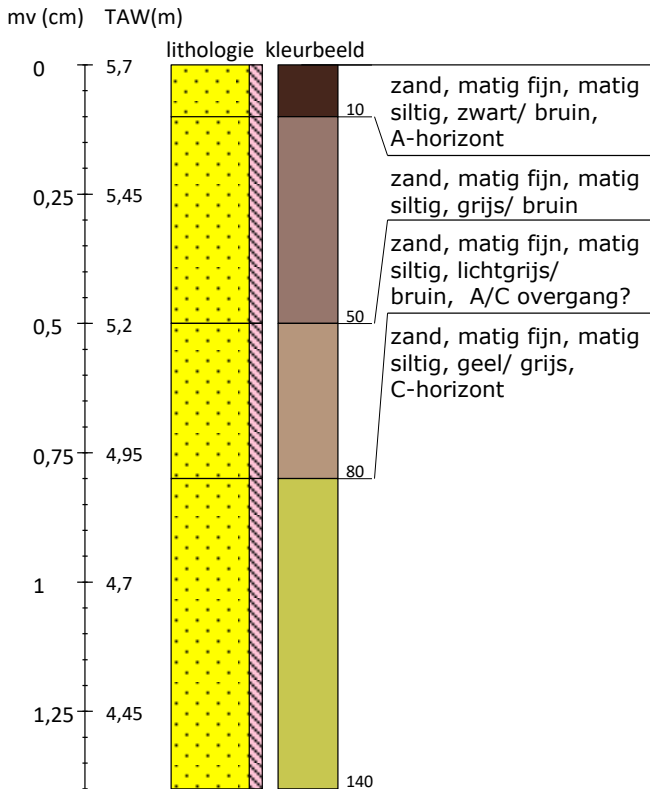
Boring 7 Lb 72-coördinaten: 143334/196065



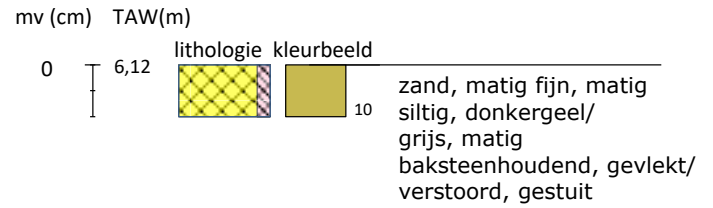
Boring 8 Lb 72-coördinaten: 143385/196090



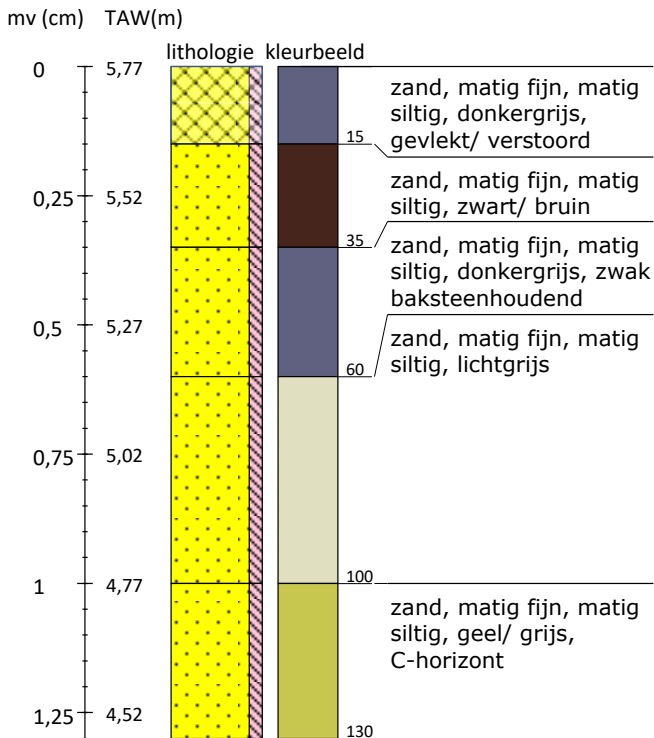
Boring 9 Lb 72-coördinaten: 143363/196098



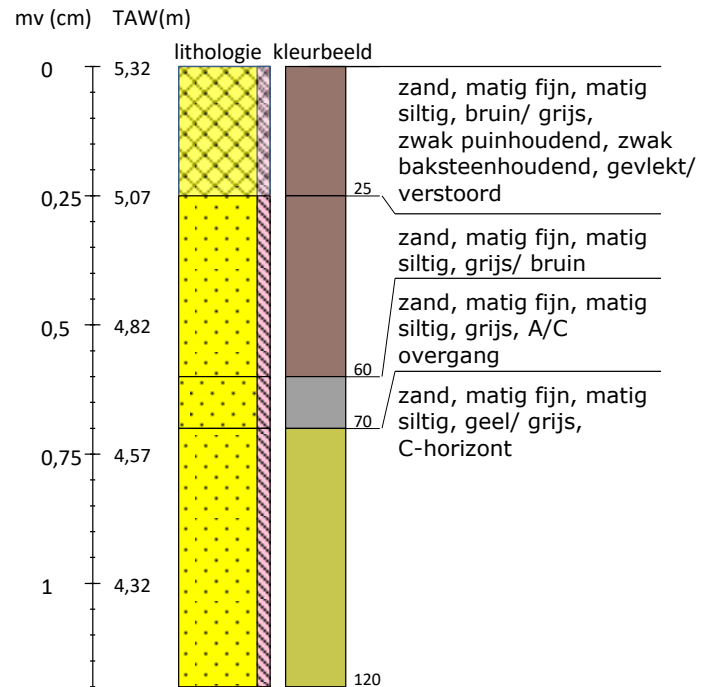
Boring 10 Lb 72-coördinaten: 143391/196116



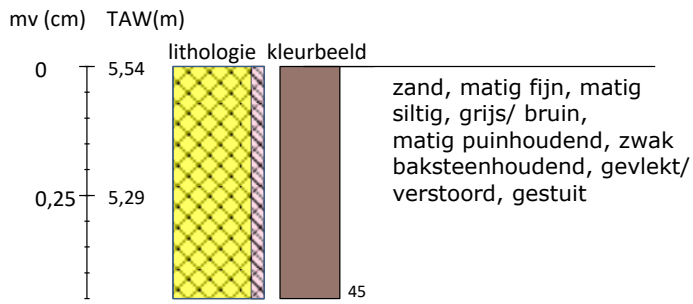
Boring 11 Lb 72-coördinaten: 143368/196127



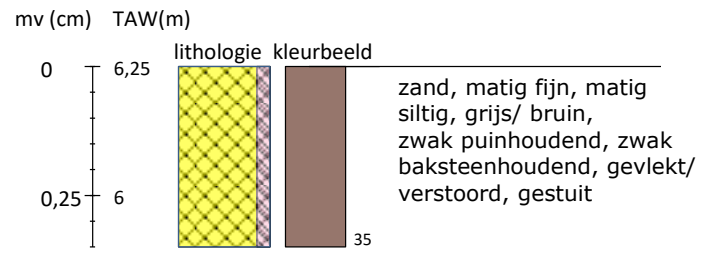
Boring 12 Lb 72-coördinaten: 143346/196138



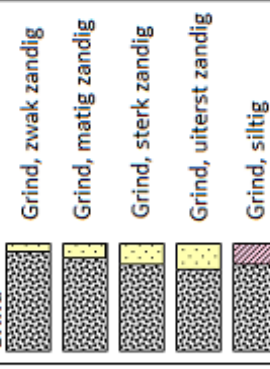
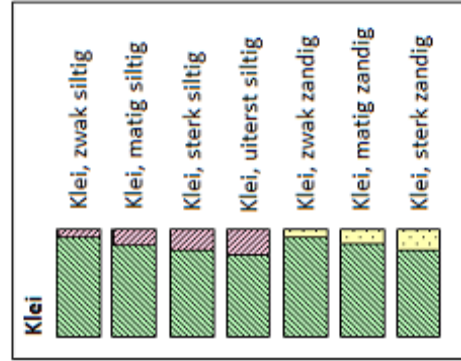
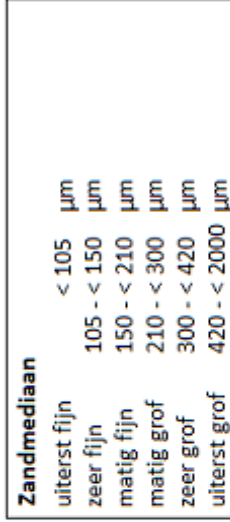
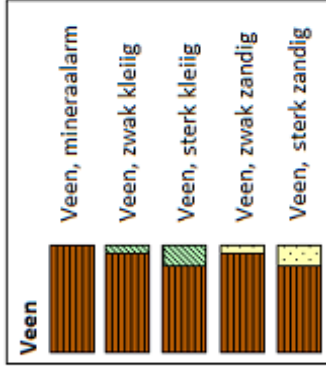
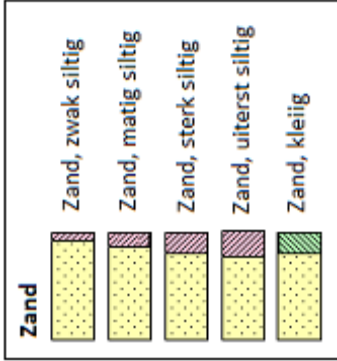
Boring 13 Lb 72-coördinaten: 143373/196151



Boring 14 Lb 72-coördinaten: 143411/196076

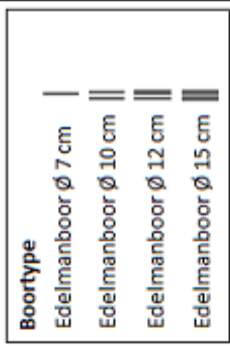


Legenda (conform NEN 5104, boorbeschrijvingsnorm van NITG-TNO en ASB)



Inclusies/archeologische indicatoren
(resten van planten, wortels, schelpen, wortels, hout, baksteen, puin, kolengruis, glas, aardewerk, houtskool, vuursteen, bot, fosfaat)

weinig < 1%
matig 1-10%
veel > 10%



Riverside boor ø 7 cm

