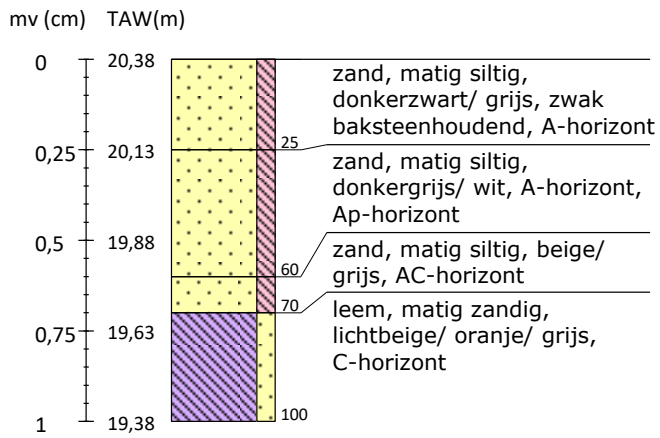
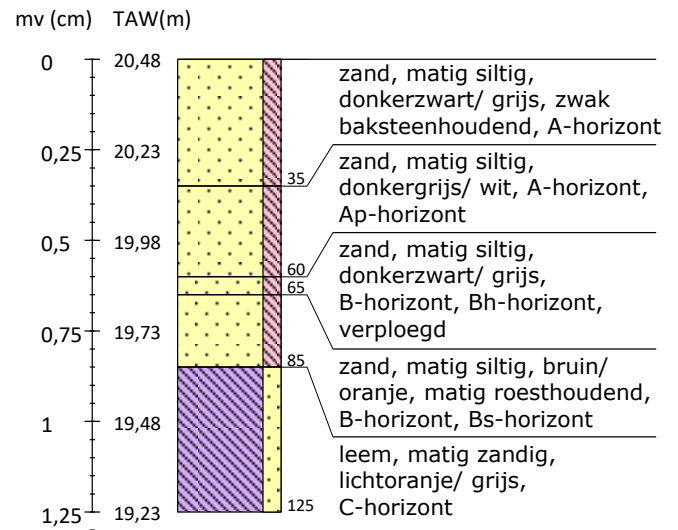


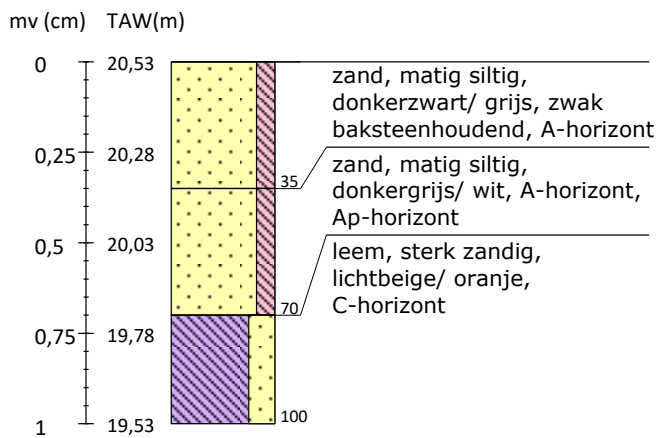
Boring 1 Lb 72-coördinaten: 166480/231164



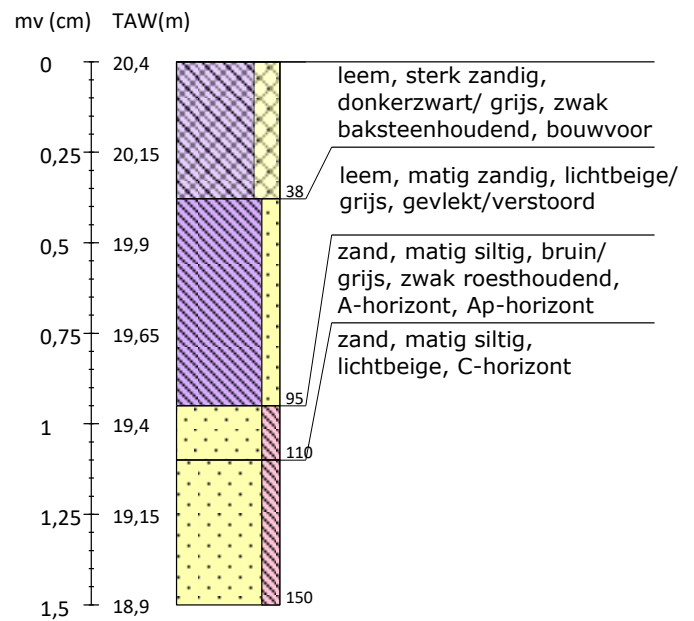
Boring 2 Lb 72-coördinaten: 166480/231204



Boring 3 Lb 72-coördinaten: 166481/231244

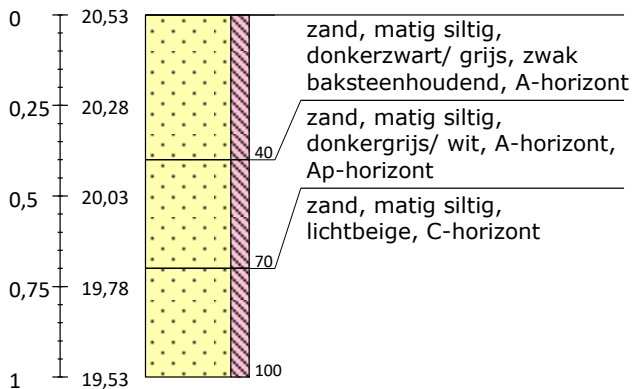


Boring 4 Lb 72-coördinaten: 166531/231284



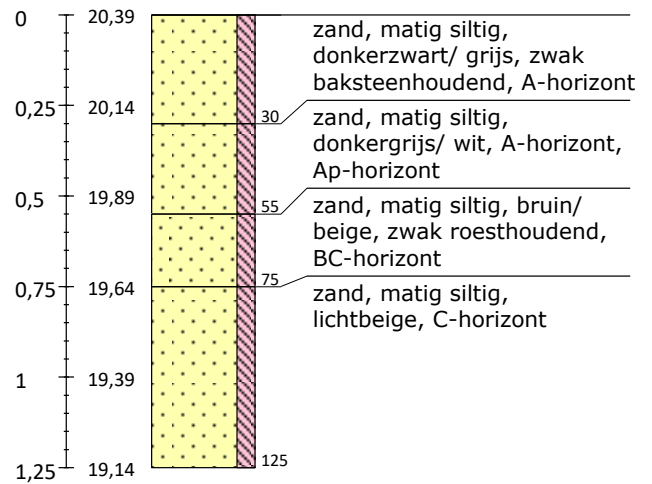
Boring 5 Lb 72-coördinaten: 166481/231284

mv (cm) TAW(m)



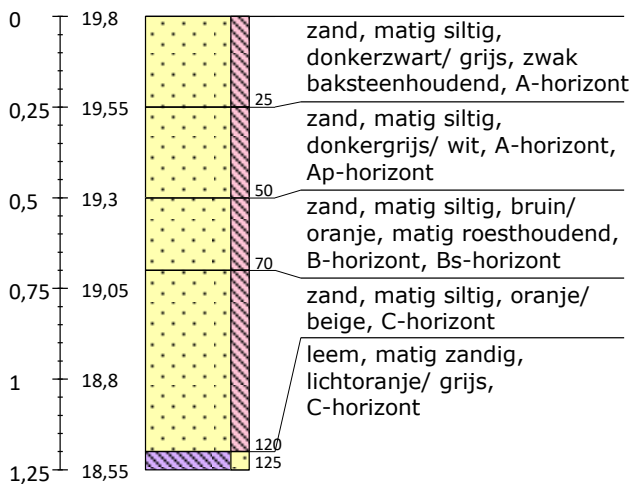
Boring 6 Lb 72-coördinaten: 166431/231285

mv (cm) TAW(m)



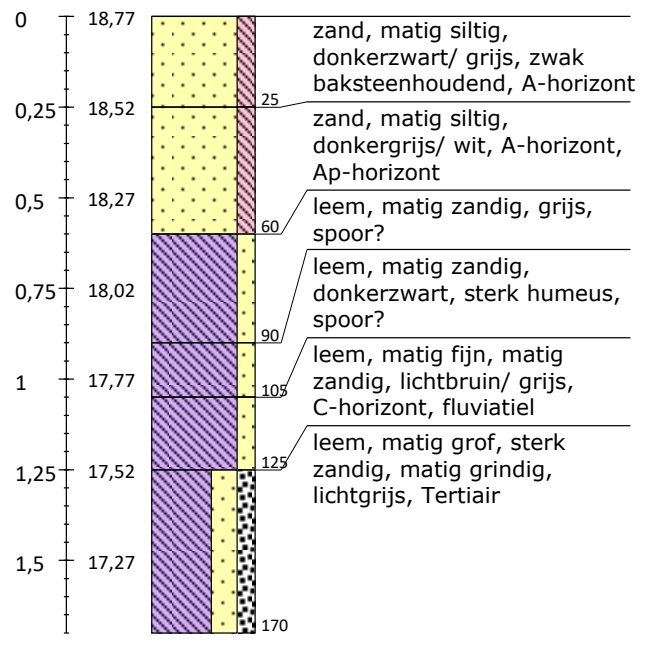
Boring 7 Lb 72-coördinaten: 166381/231285

mv (cm) TAW(m)

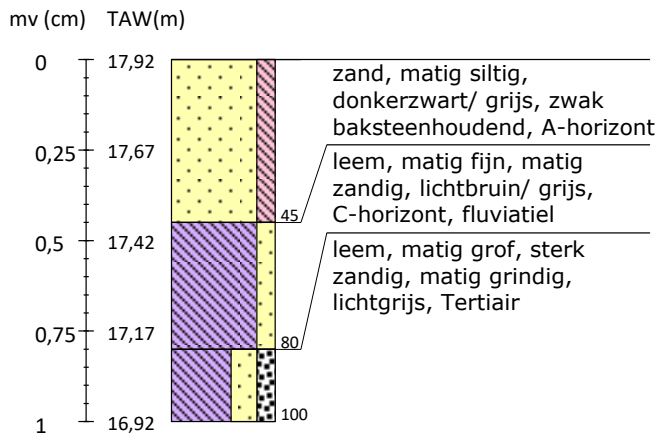


Boring 8 Lb 72-coördinaten: 166331/231286

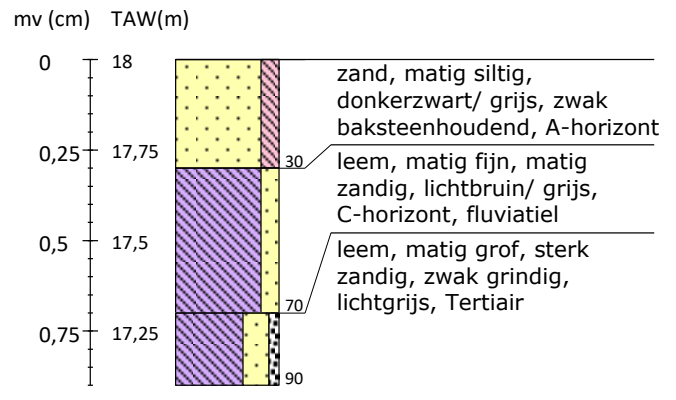
mv (cm) TAW(m)



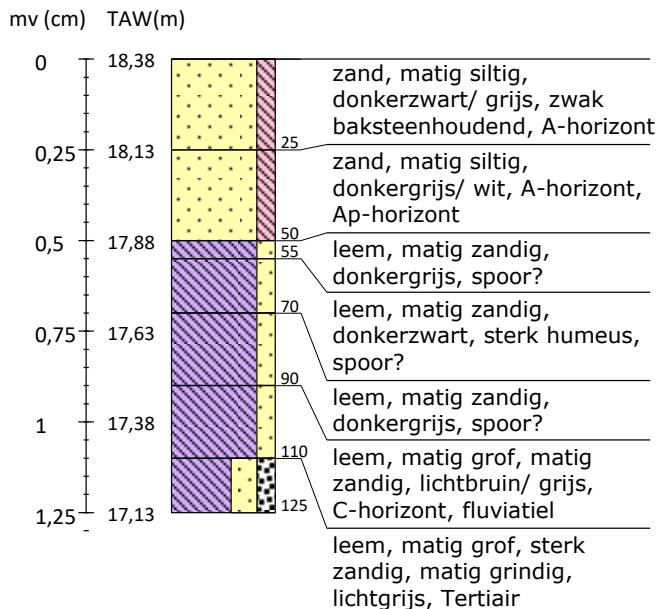
Boring 9 Lb 72-coördinaten: 166281/231287



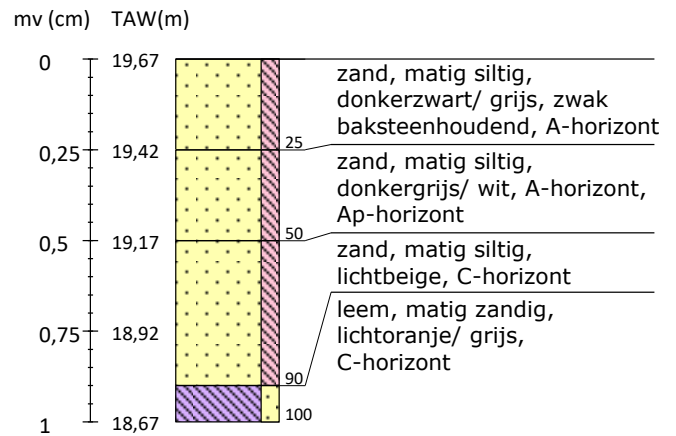
Boring 10 Lb 72-coördinaten: 166281/231326



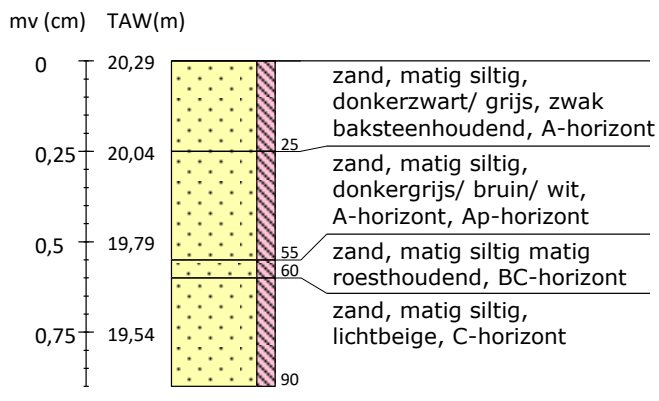
Boring 11 Lb 72-coördinaten: 166332/231326



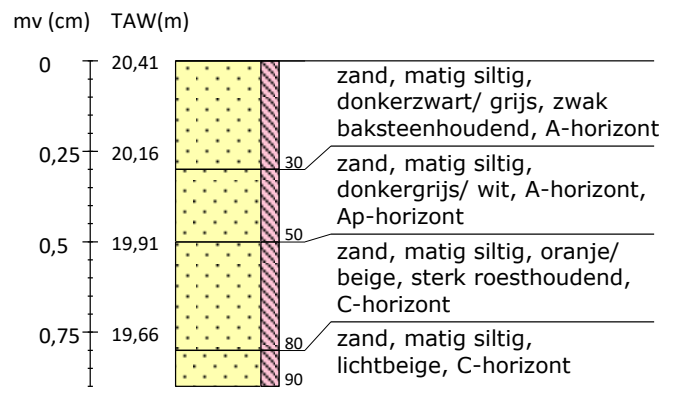
Boring 12 Lb 72-coördinaten: 166381/231325



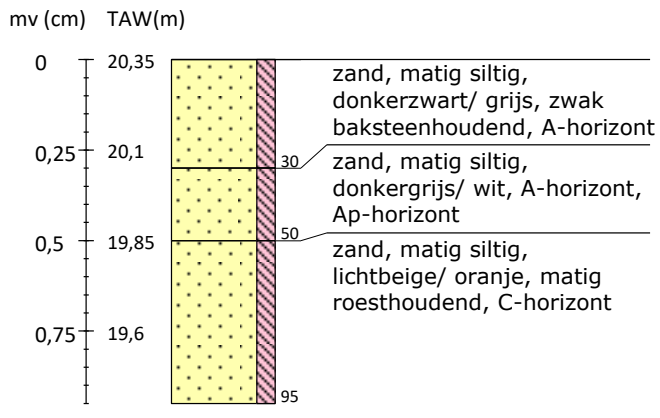
Boring 13 Lb 72-coördinaten: 166431/231325



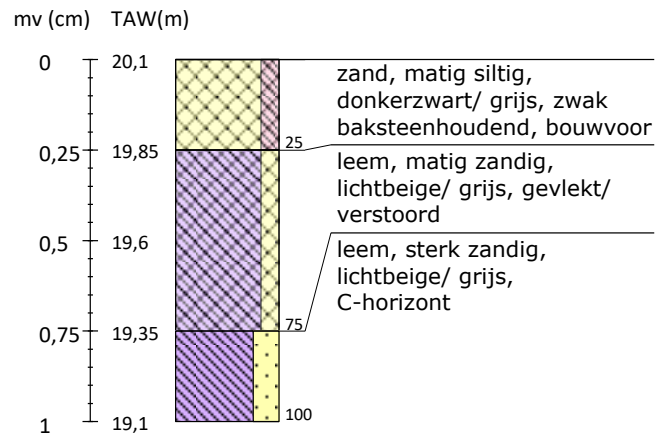
Boring 14 Lb 72-coördinaten: 166481/231324



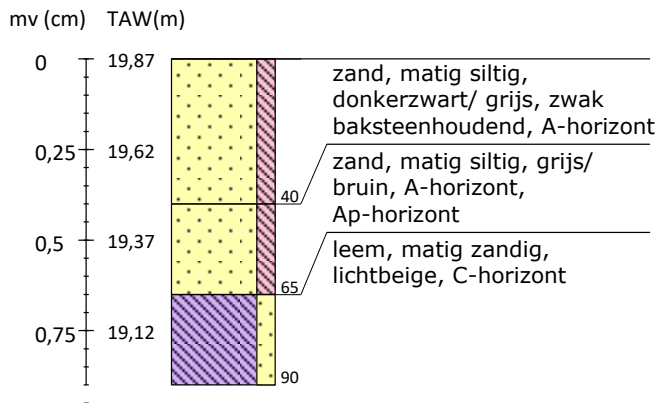
Boring 15 Lb 72-coördinaten: 166531/231324



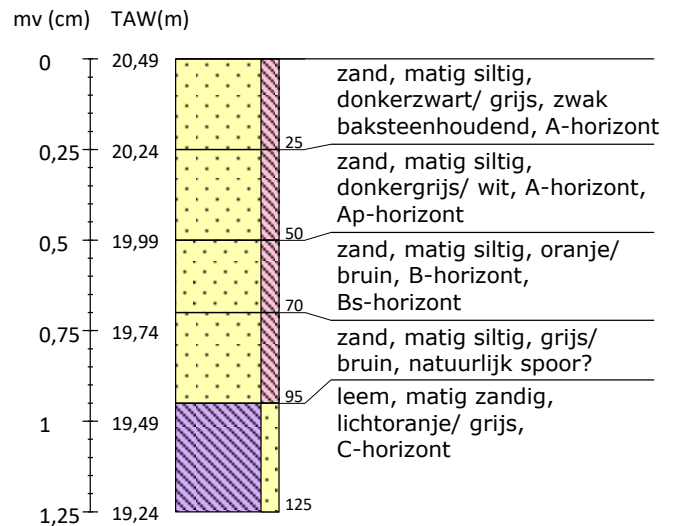
Boring 16 Lb 72-coördinaten: 166581/231323



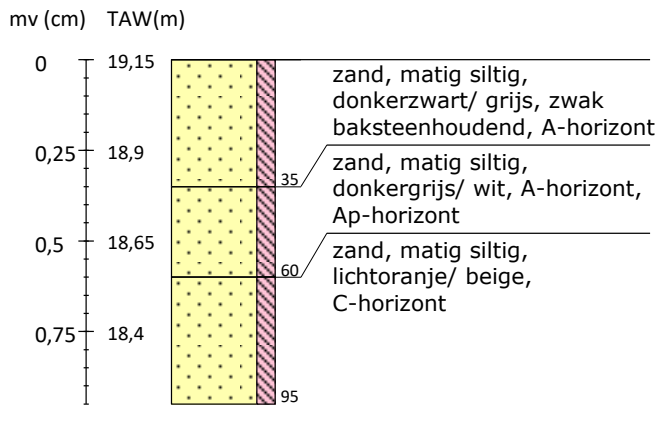
Boring 17 Lb 72-coördinaten: 166631/231323



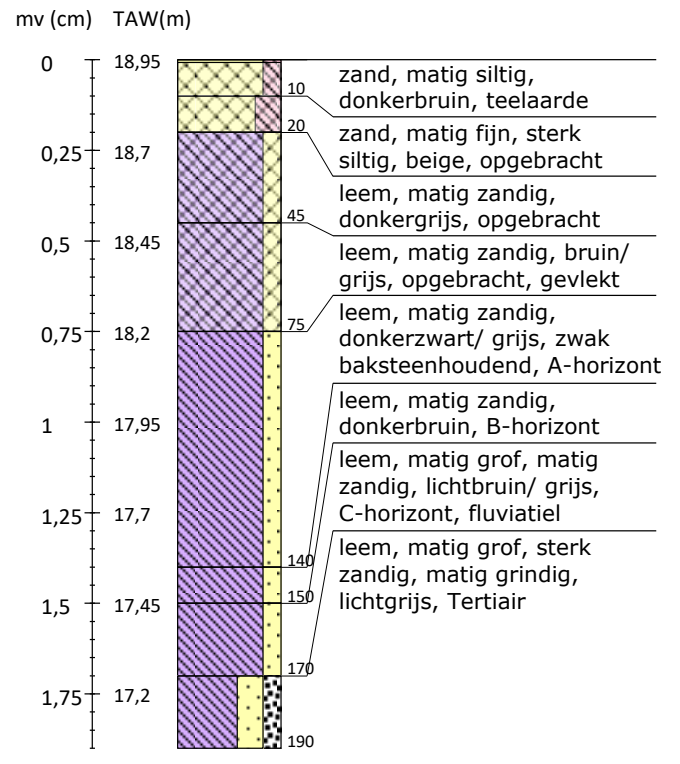
Boring 18 Lb 72-coördinaten: 166482/231364

































Boring 19 Lb 72-coördinaten: 166330/231246



Boring 20 Lb 72-coördinaten: 166280/231247



Legenda (conform NEN 5104, boorbeschrijvingsnorm van NITG-TNO en ASB)

<p>Zand</p>  <p>Zand, zwak siltig</p>  <p>Zand, matig siltig</p>  <p>Zand, sterk siltig</p>  <p>Zand, uiterst siltig</p>  <p>Zand, kleilig</p>	<p>Veen</p>  <p>Veen, mineraalarm</p>  <p>Veen, zwak kleilig</p>  <p>Veen, sterk kleilig</p>  <p>Veen, zwak zandig</p>  <p>Veen, sterk zandig</p>	<p>Zandmediaan</p> <p>uiterst fijn < 105 µm</p> <p>zeer fijn 105 - < 150 µm</p> <p>matig fijn 150 - < 210 µm</p> <p>matig grof 210 - < 300 µm</p> <p>zeer grof 300 - < 420 µm</p> <p>uiterst grof 420 - < 2000 µm</p> <p>Zandsortering</p> <p>goed gesorteerd D60/D10 < 1,8</p> <p>matig gesorteerd D60/D10 1,8 < 3</p> <p>slecht gesorteerd D60/D10 > 3</p>	<p>Boortype</p> <p>Edelmanboor Ø 7 cm</p> <p>Edelmanboor Ø 10 cm</p> <p>Edelmanboor Ø 12 cm</p> <p>Edelmanboor Ø 15 cm</p> <p>Guts Ø 2 cm</p> <p>Guts Ø 3 cm</p> <p>Riverside boor Ø 7 cm</p>
<p>Klei</p>  <p>Klei, zwak siltig</p>  <p>Klei, matig siltig</p>  <p>Klei, sterk siltig</p>  <p>Klei, uiterst siltig</p>  <p>Klei, zwak zandig</p>  <p>Klei, matig zandig</p>  <p>Klei, sterk zandig</p>	<p>Grind</p>  <p>Grind, zwak zandig</p>  <p>Grind, matig zandig</p>  <p>Grind, sterk zandig</p>  <p>Grind, uiterst zandig</p>  <p>Grind, siltig</p>	<p>Inclusies/archeologische indicatoren</p> <p>(resten van planten, wortels, schelpen, wortels, hout, baksteen, puin, kolengruis, glas, aardewerk, houtskool, vuursteen, bot, fosfaat)</p> <p>weinig < 1%</p> <p>matig 1-10%</p> <p>veel > 10%</p>	<p>Mechanische boor Ø 10 cm</p> <p>Mechanische boor Ø 12 cm</p> <p>Mechanische boor Ø 15 cm</p> <p>Mechanische boor Ø 20 cm</p>
<p>Leem</p>  <p>Leem, zwak zandig</p>  <p>Leem, sterk zandig</p>	<p>Overige toevoegingen</p>  <p>zwak humeus</p>  <p>matig humeus</p>  <p>sterk humeus</p>  <p>zwak grindig</p>  <p>matig grindig</p>  <p>sterk grindig</p>	<p>Begrenzing onderliggende laag</p> <p>scherp overgangsgebied < 0,3 cm</p> <p>onscherp overgangsgebied 0,3 - < 3 cm</p> <p>diffuus overgangsgebied 3 cm - < 10 cm</p>	<p>Grondwaterstand</p> <p>GHG</p> <p>GWG</p> <p>GLG</p> <p>Kalkgehalte</p> <p>kalkloos geen opbruising, minder dan 0,5% CaCO₃</p> <p>kalkarm hoorbare opbruising, circa 0,5 - 1 à 2 % CaCO₃</p> <p>kalkrijk zichtbare opbruising, 1 à 2% CaCO₃</p>