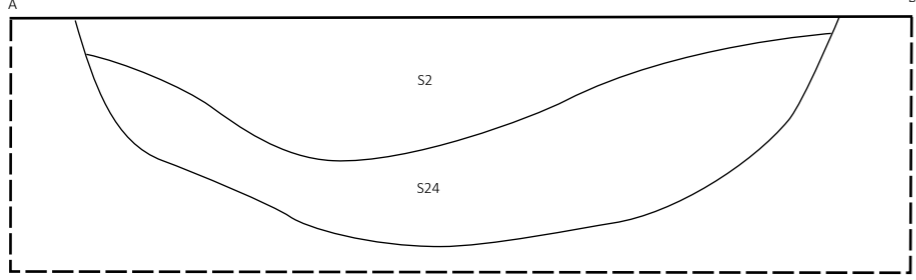
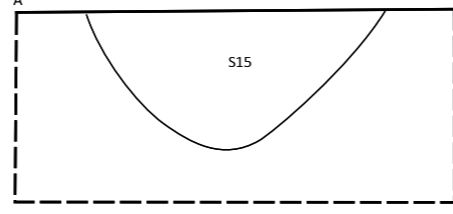




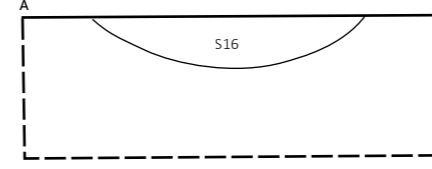
4. 2AB 22-03-2017 WP2 VL1 26,65 m TAW



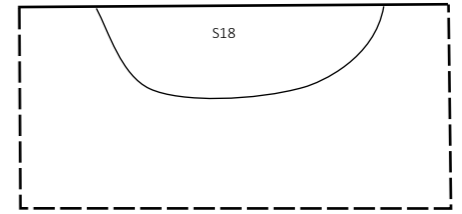
8. 19AB 22-03-2017 WPS VL1 26,37 m TAW



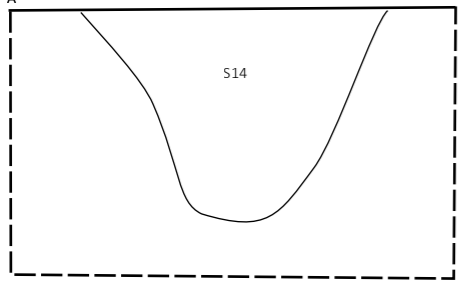
9. 16AB 22-03-2017 WPS VL1 26,32 m TAW



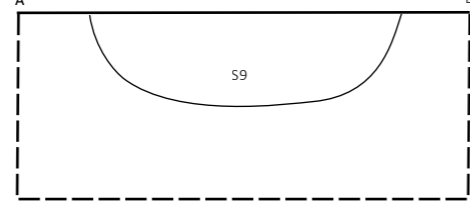
10. 18AB 22-03-2017 WPS VL1 26,39 m TAW



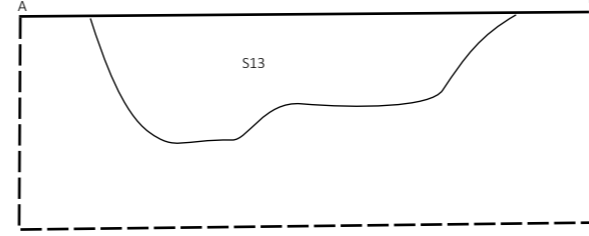
11. 14AB 22-03-2017 WPS VL1 26,37 m TAW



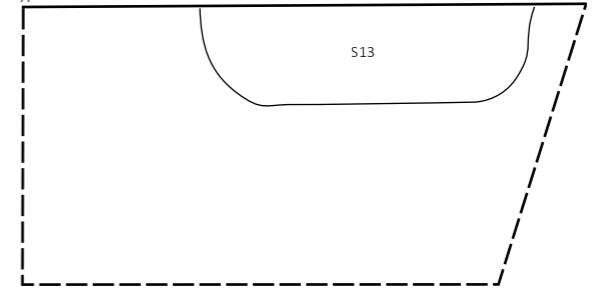
12. 9AB 22-03-2017 WPS VL1 26,36 m TAW



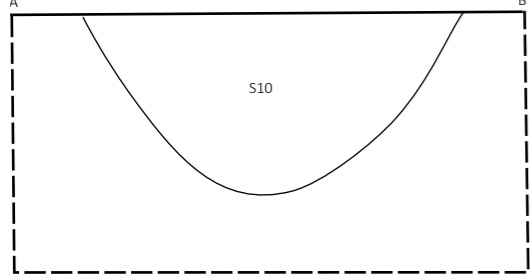
7. 13AB 22-03-2017 WPS VL1 26,37 m TAW



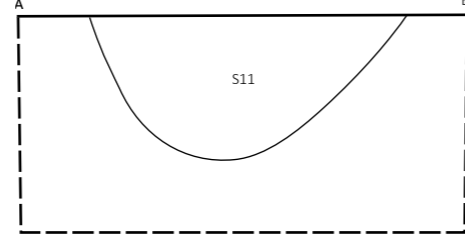
16. 13CD 22-03-2017 WPS VL1 26,37 m



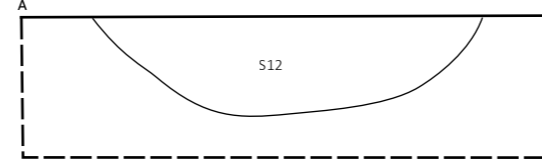
13. 10AB 22-03-2017 WPS VL1 26,37 m TAW



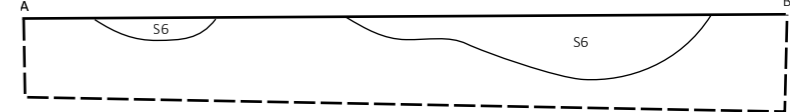
14. 11AB 22-03-2017 WPS VL1 26,40 m TAW



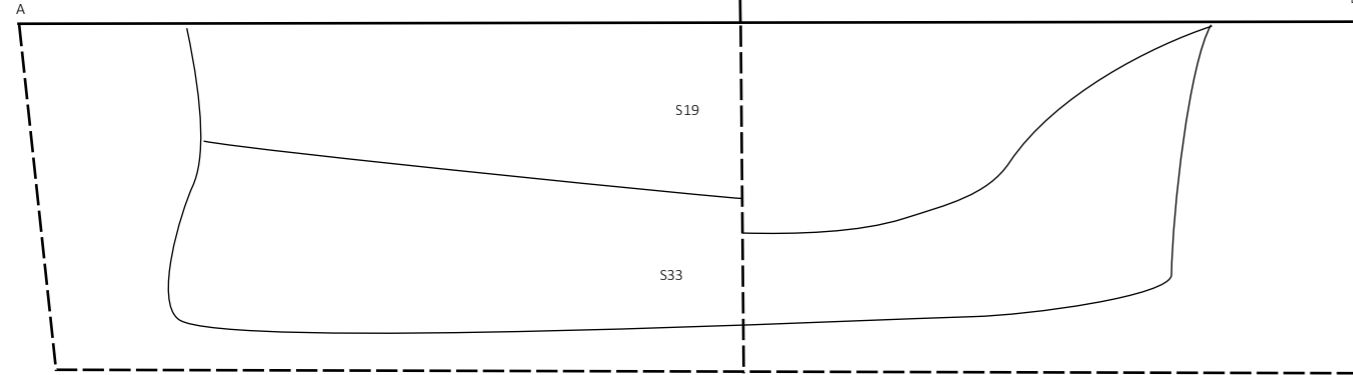
15. 12AB 22-03-2017 WPS VL1 26,42 m TAW



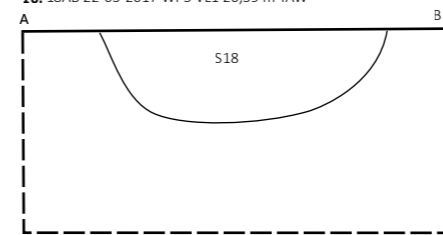
24. 6AB 24-03-2017 WPS VL1 26,36 m TAW



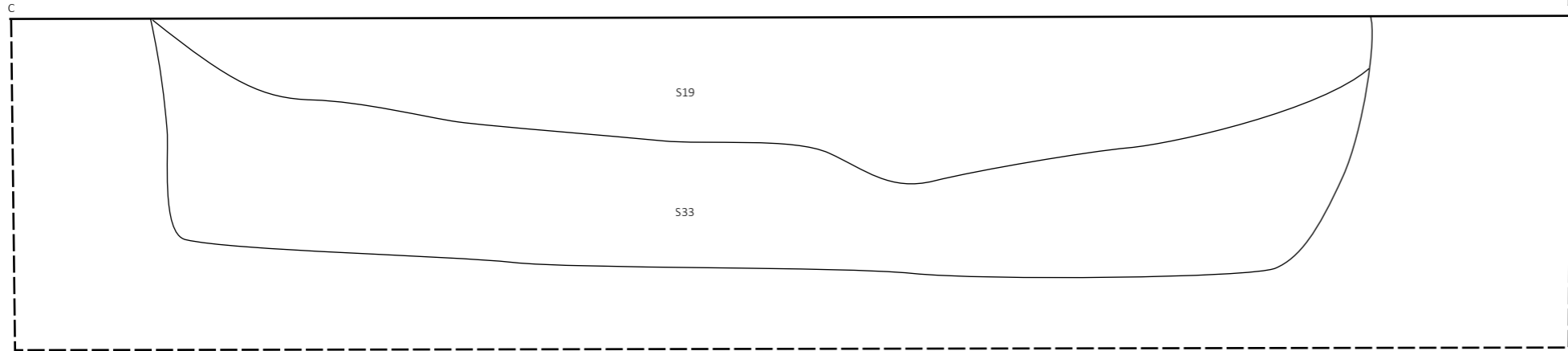
25. 19AB 24-03-2017 WPS VL1 26,40 m TAW



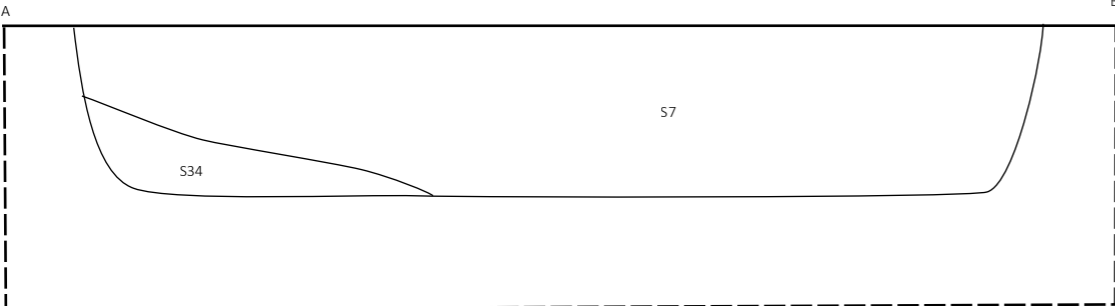
10. 18AB 22-03-2017 WPS VL1 26,39 m TAW



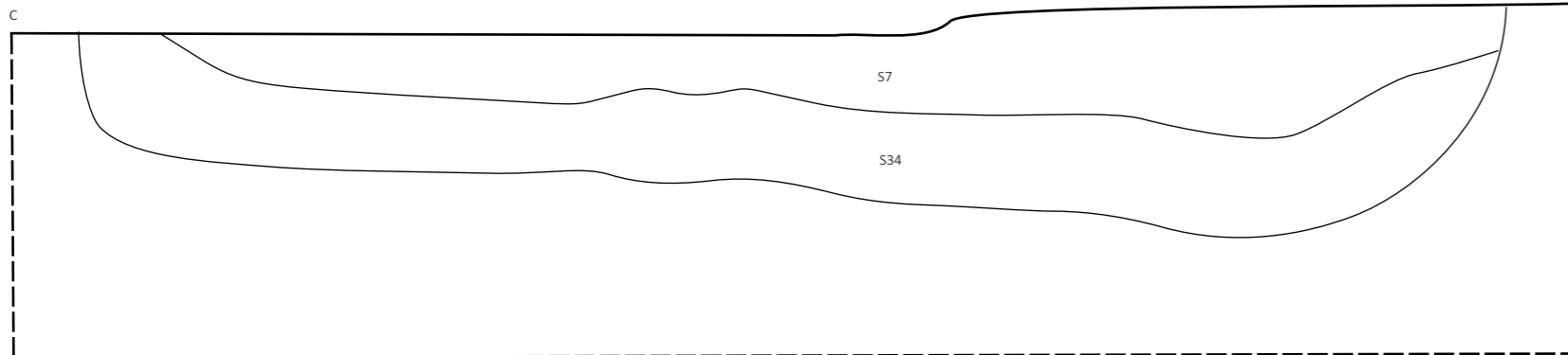
26. 19CD 24-03-2017 WPS VL1 26,40 m



27. 7AB 24-03-2017 WPS VL1 26,35 m TAW



28. 7CD 24-03-2017 WPS VL1 26,30 m TAW



29. 38AB 24-03-2017 WP4 VL1 25,82 m TAW

