



18-10-2024

BC project & development

Herbestemming Noordlaan 20

PCp architects

Emiel Van Dorenlaan 69 - B-3600 Genk

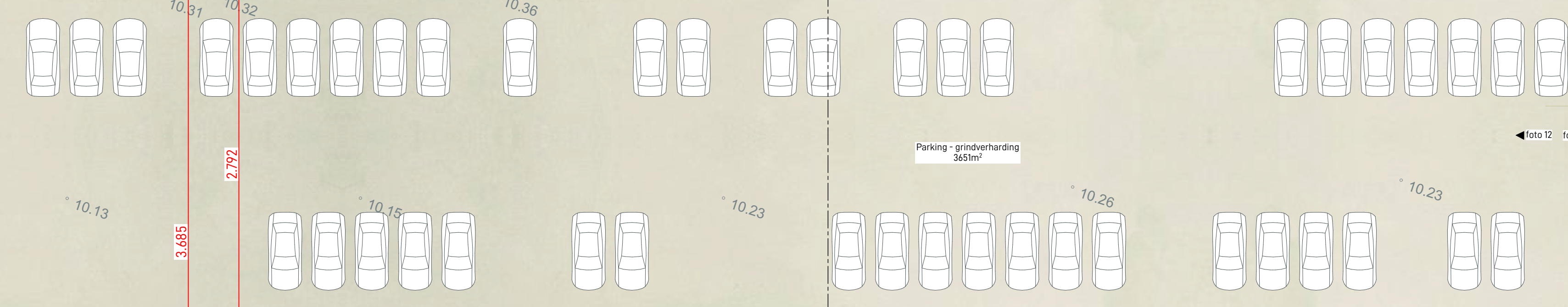
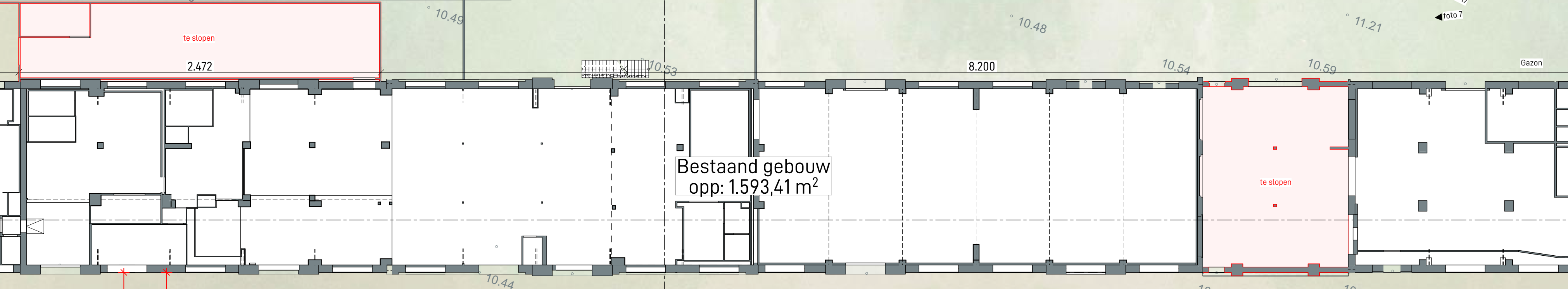
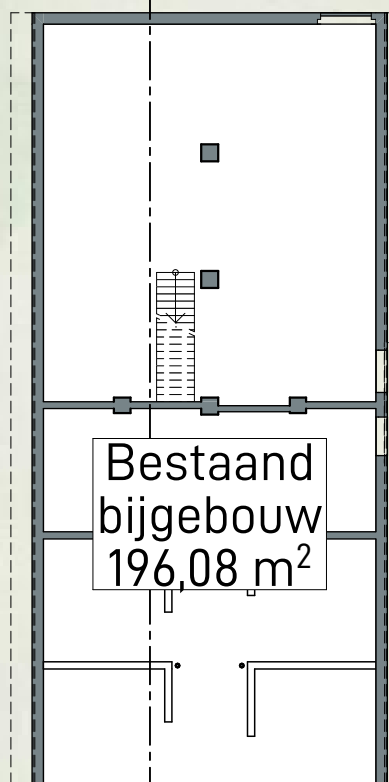
+32 (0)89 700 400 - www.pcp-architects.be

Afd 7, sectie H
nr. 2/D108

-17.998-

Afd 7, sectie H
nr. 52/P14

Afd 7, sectie H
nr. 52/K13



-17.953-

voetpad - beton

berm - gras

NOORDLAAN

As van de weg - beton

Parkeerplaatsen - beton

berm - gras

fiets-/voetpad - beton & klinkers

Afd 7, sectie H
nr. 2/B108

Afd 7, sectie H
nr. 2/S82

Afd 7, sectie H
nr. 2/T82

Afd 7, sectie H
nr. 2/L87

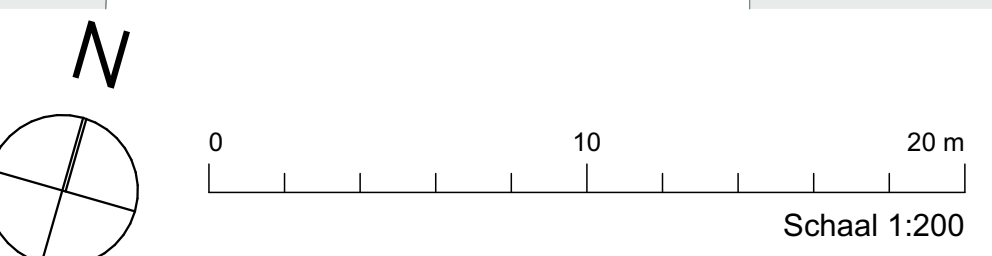
Afd 7, sectie H
nr. 2/K87

Afd 7, sectie H
nr. 2/K82

Afd 7, sectie H
nr. 2/K116

Afd 7, sectie H
nr. 2/H86

Afd 7, sectie H
nr. 2/P87



Herbestemming Noordlaan 20 - ref. 24/PCp.04

Bestaand gebouw BT 1330
18-10-2024 - Voorontwerp

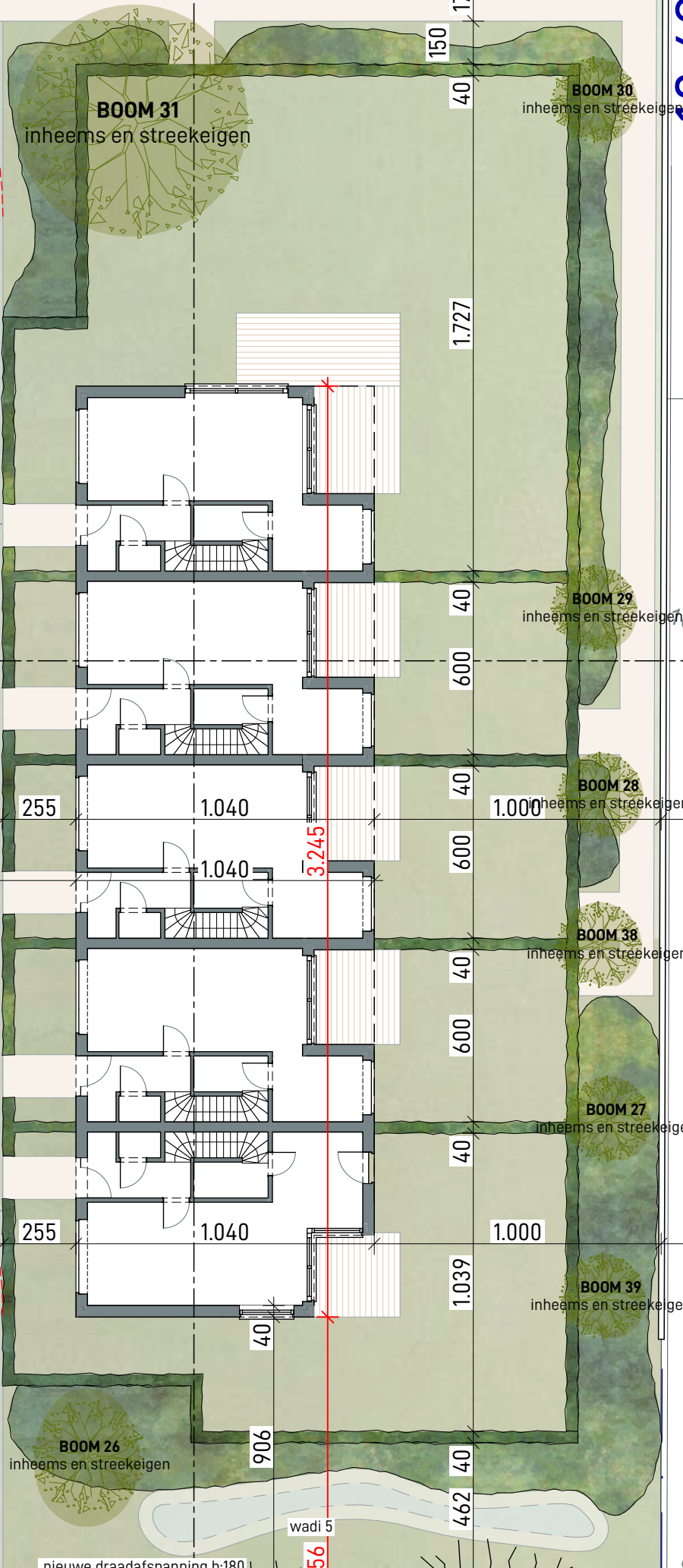
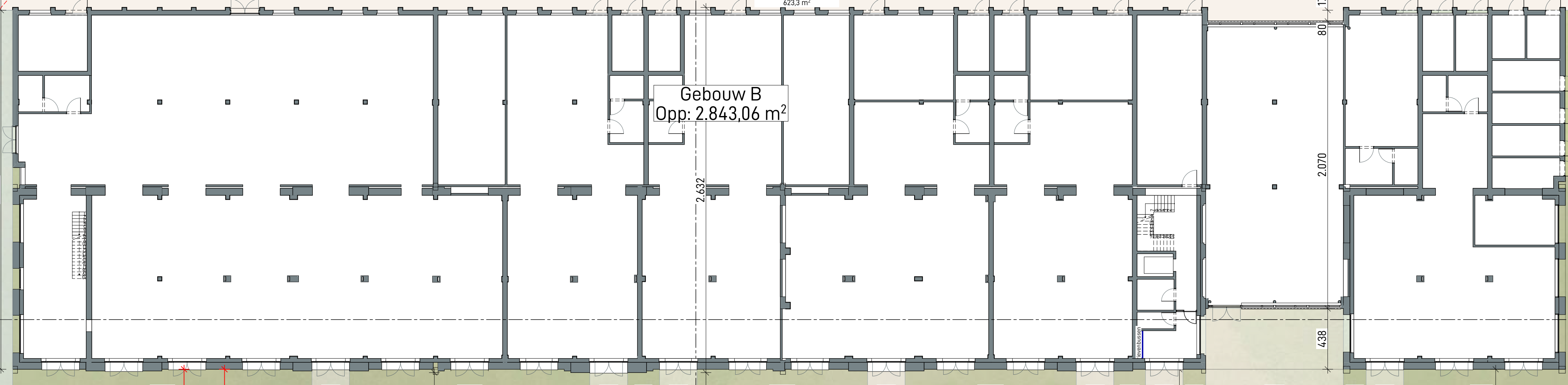
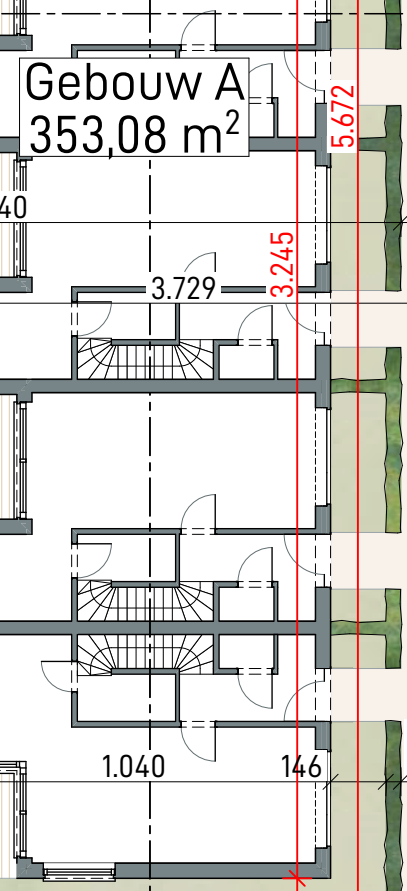
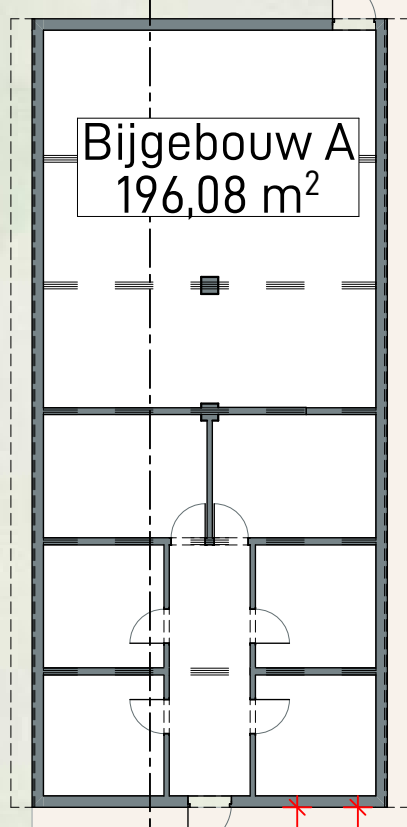
PC architects PC Emiel Van Doremalen 06 - 53401 Genk
+32 (0)33 701 400 - www.pc-architects.be

Afd 7, sectie H
nr. 2/D108

-17.998-

Afd 7, sectie H
nr. 52/P14

Afd 7, sectie H
nr. 52/K13



Afd 7, sectie H
nr. 2A/115

14-18

-17.953-

voetpad - beton
berm - gras
NOORDLAAN

As van de weg - beton

Parkeerplaatsen - beton
berm - gras
fiets-/voetpad - beton & klinkers

Afd 7, sectie H
nr. 2/B108

Afd 7, sectie H
nr. 2/S82

Afd 7, sectie H
nr. 2/T82

Afd 7, sectie H
nr. 2/L87

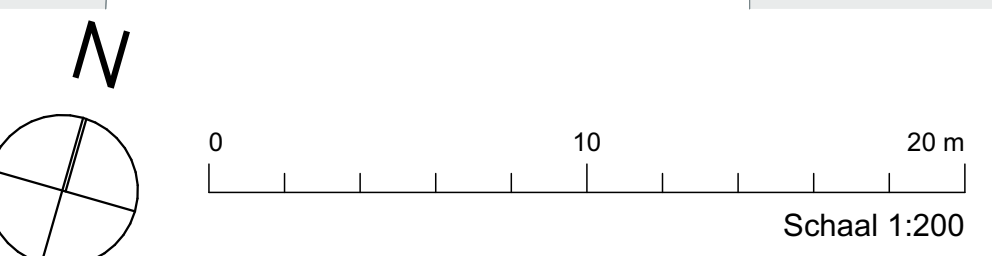
Afd 7, sectie H
nr. 2/K87

Afd 7, sectie H
nr. 2/K82

Afd 7, sectie H
nr. 2/K116

Afd 7, sectie H
nr. 2/H86

Afd 7, sectie H
nr. 2/P87



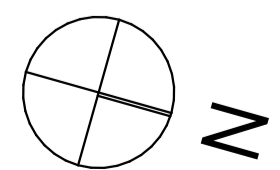
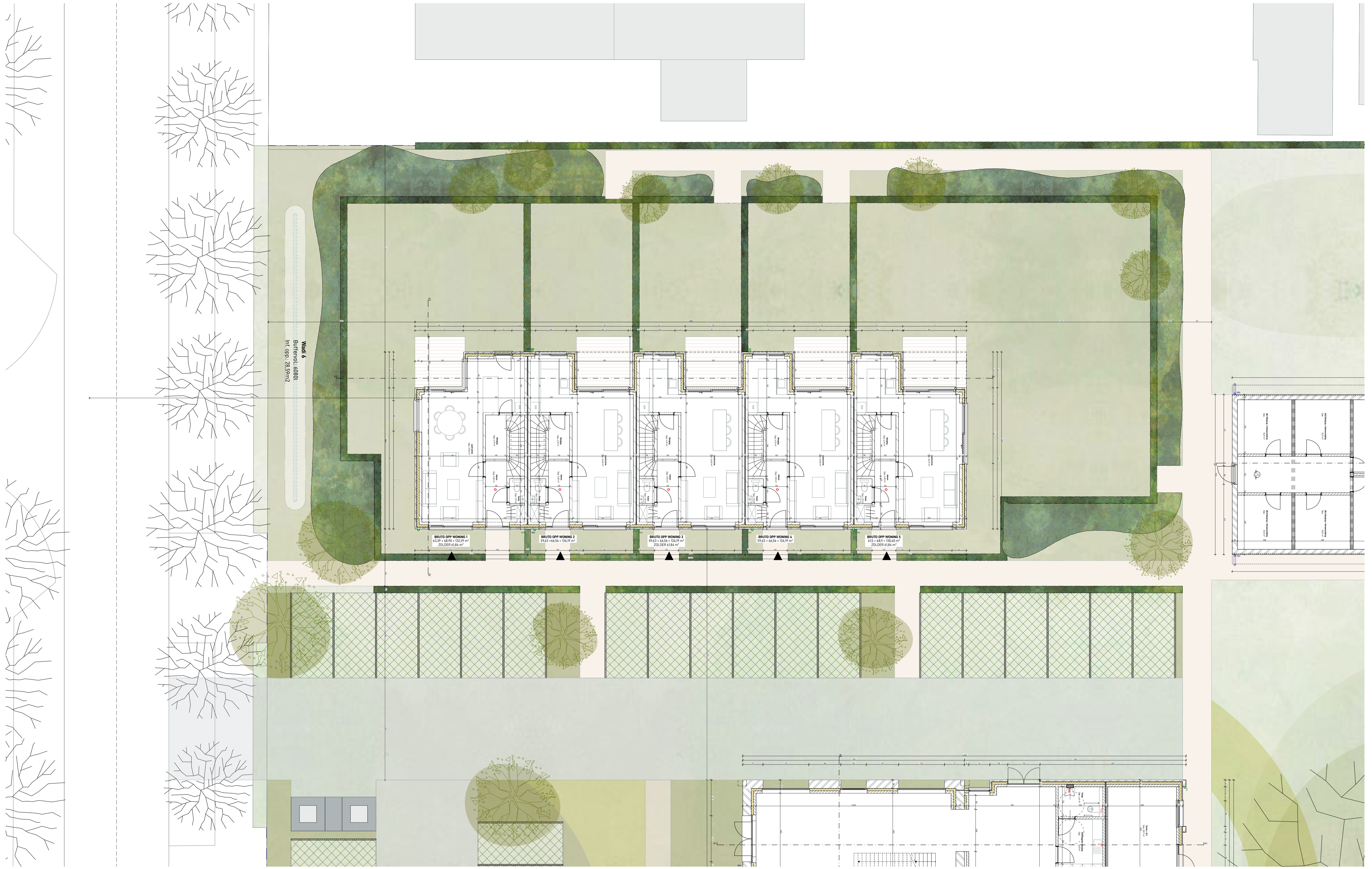
Herbestemming Noordlaan 20 - ref. 24/PCp/04

bestemmingsplan NT 1300
18-10-2024 - Voorontwerp

PCp architects PC

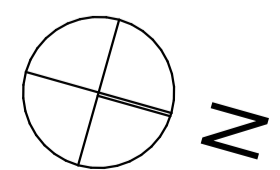
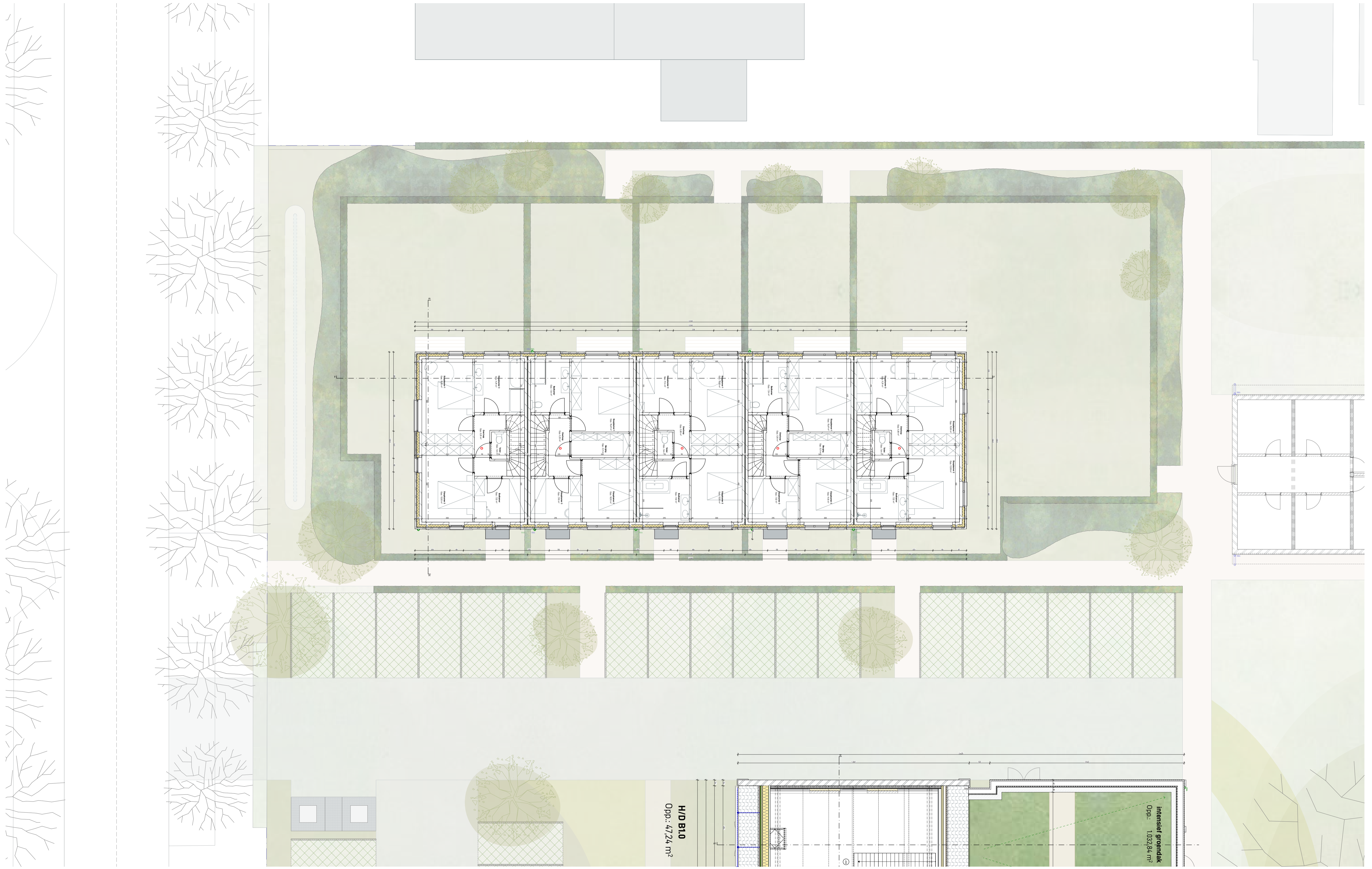
BLOK A + C





0 1 2 3 4 5 m
Schaal 1:50





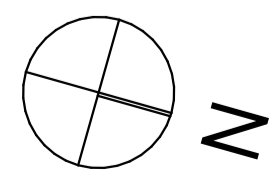
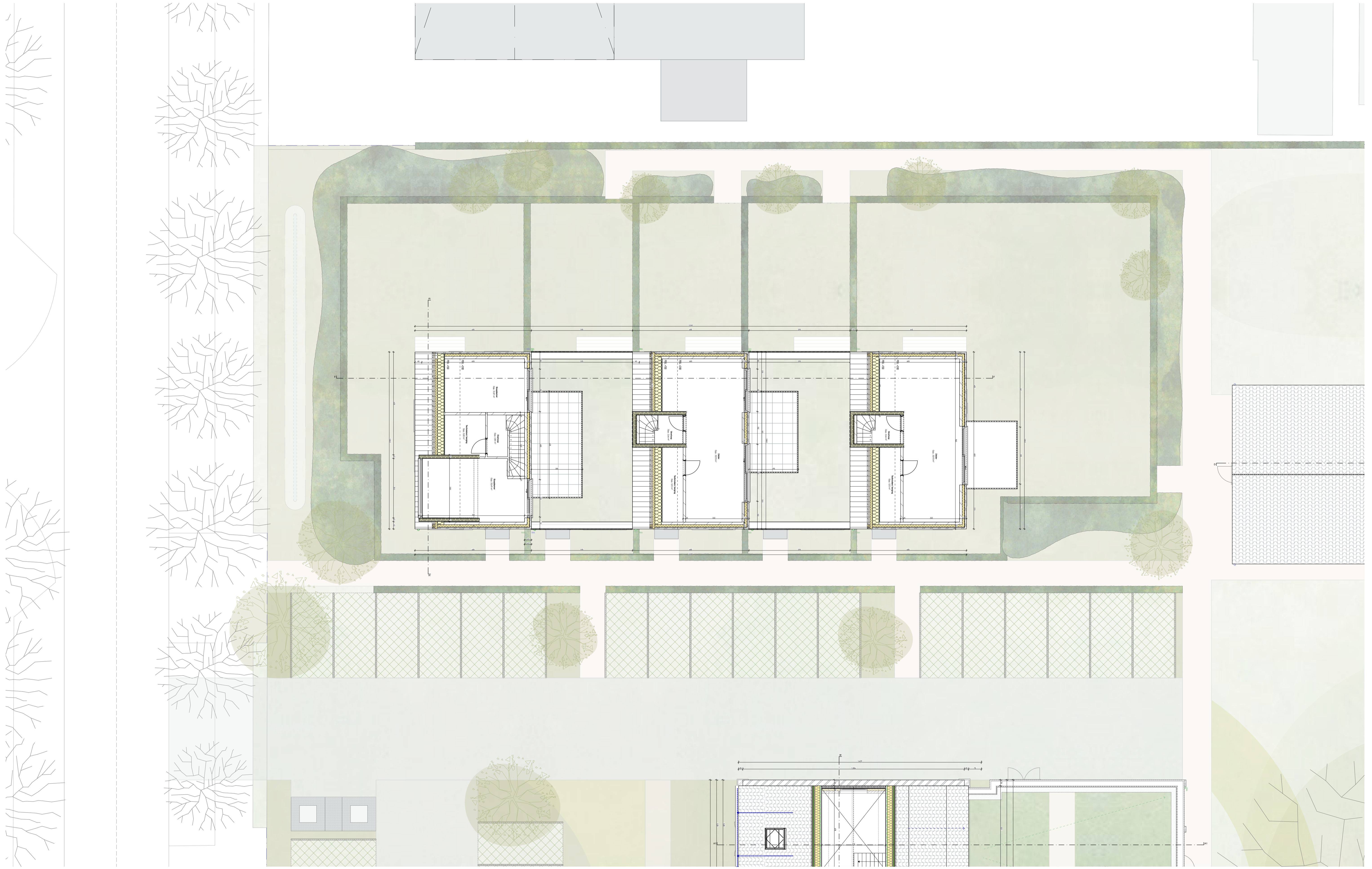
0 1 2 3 4 5 m
Schaal 1:50

1e verdieping NT 1:100, 1:50
18-10-2024 - Voorontwerp

PCp architects

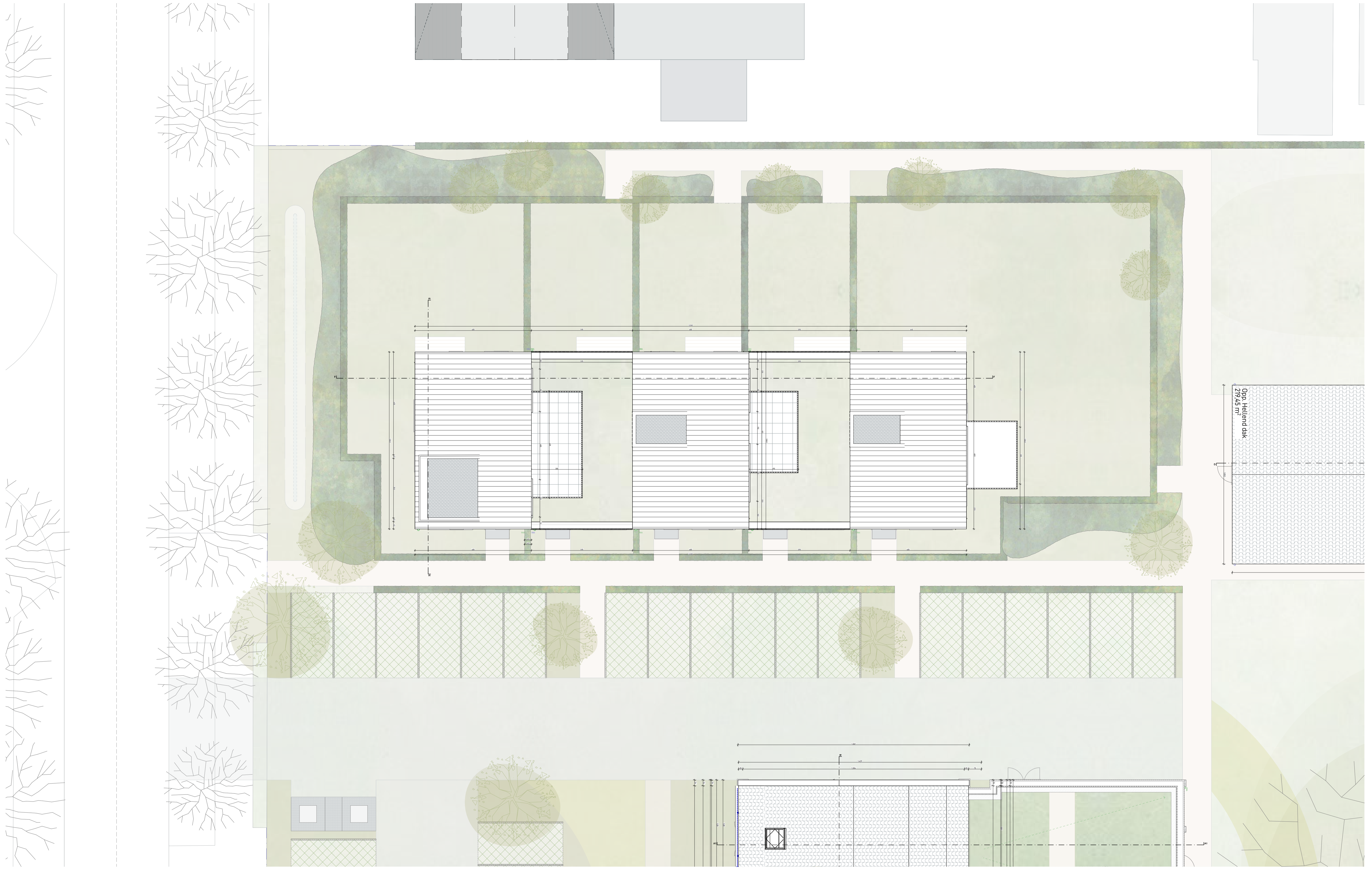


Emiel Van Dorenlaan 49 - B-3600 Genk
+32 (0)89 700 400 - www.pcp-architects.be

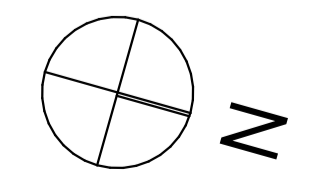


0 1 2 3 4 5 m
Schaal 1:50





Opp. Hellendak
219,45 m²

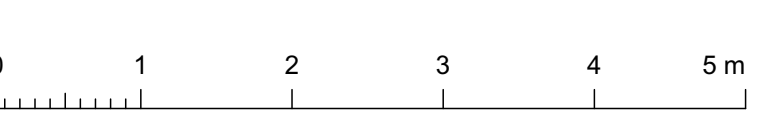


0 1 2 3 4 5 m
Schaal 1:50



0 1 2 3 4 5 m





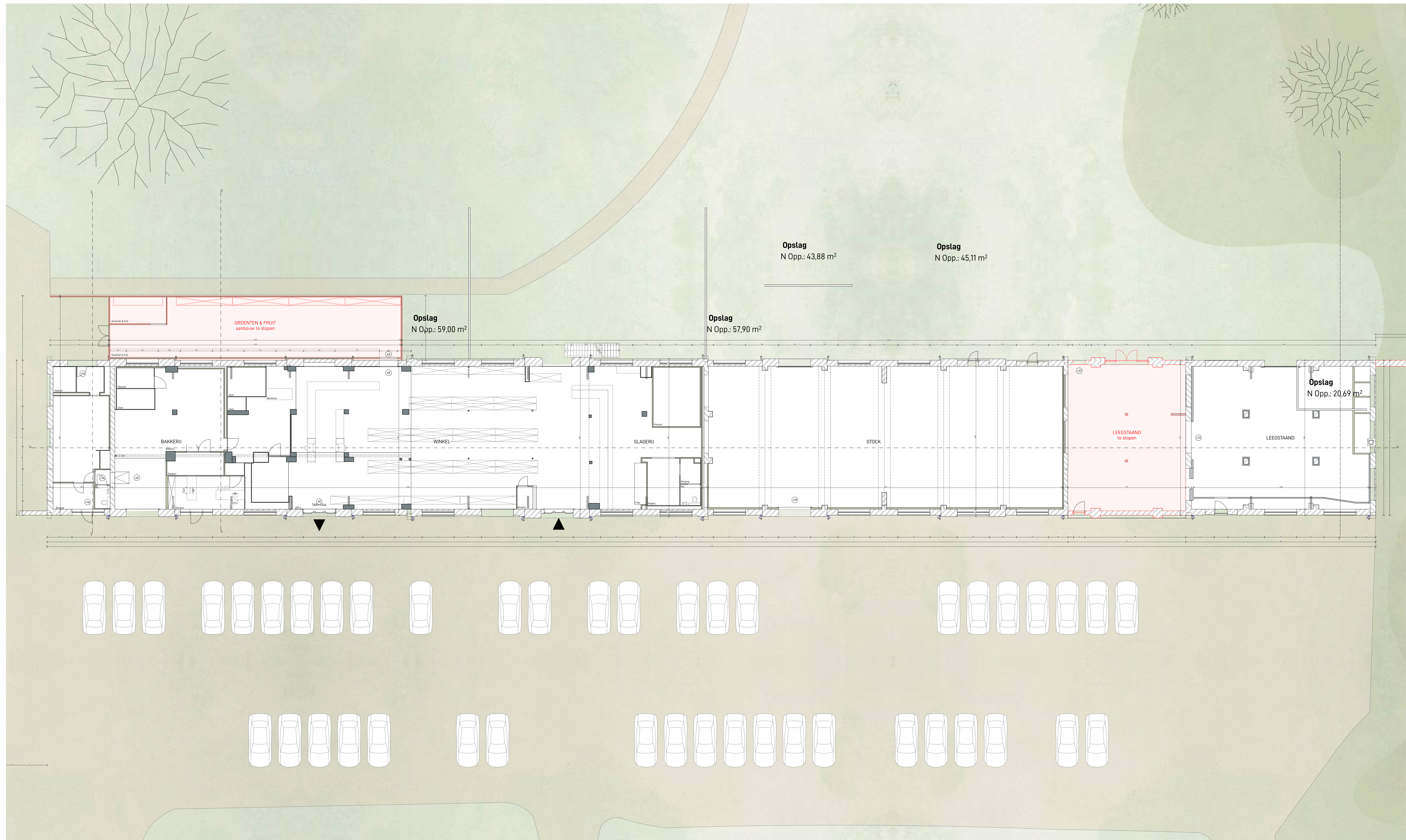


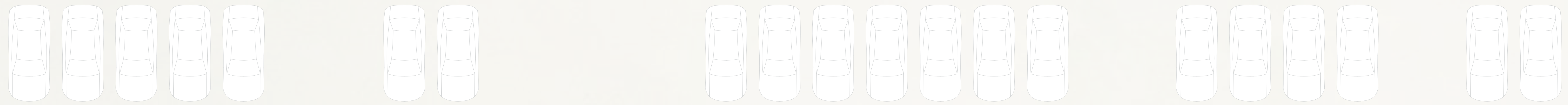
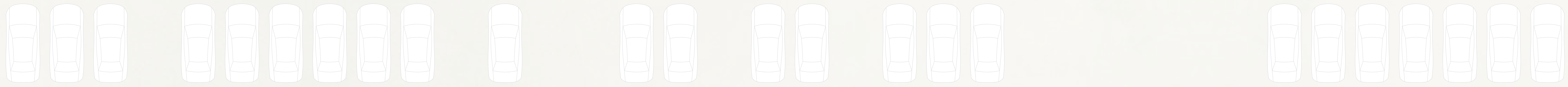
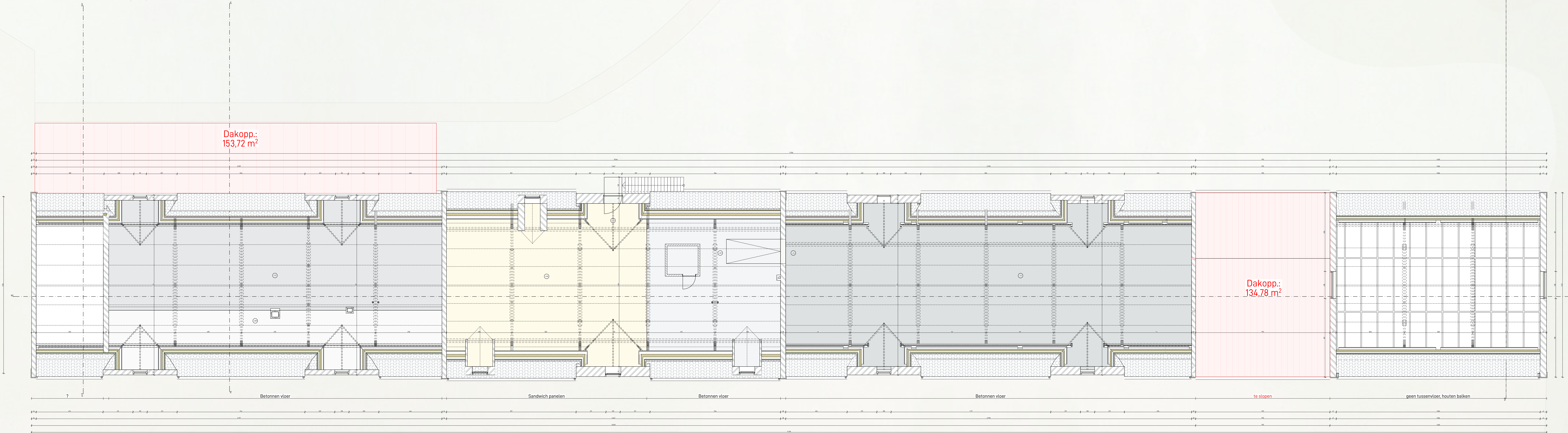
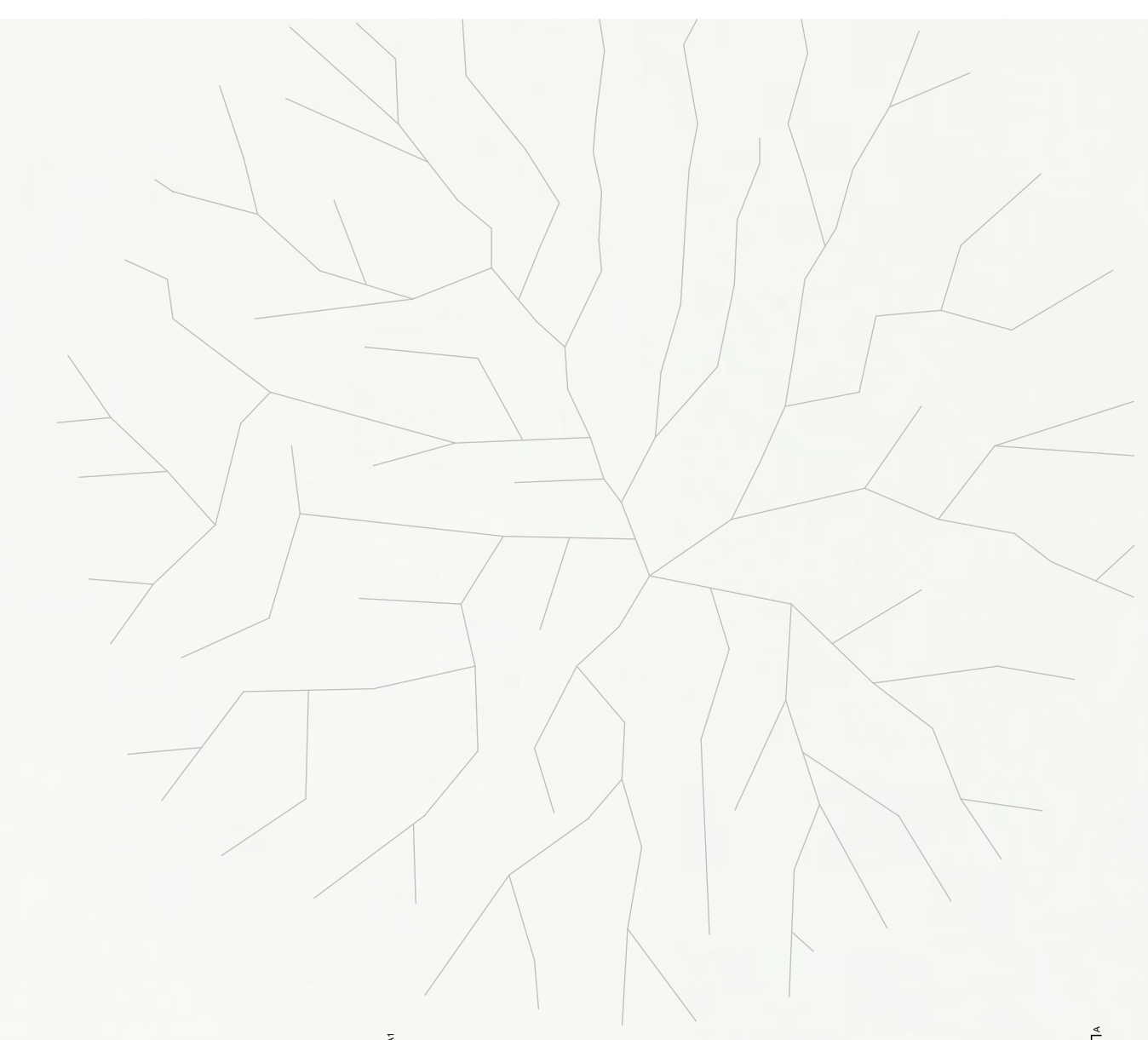
BLOK B

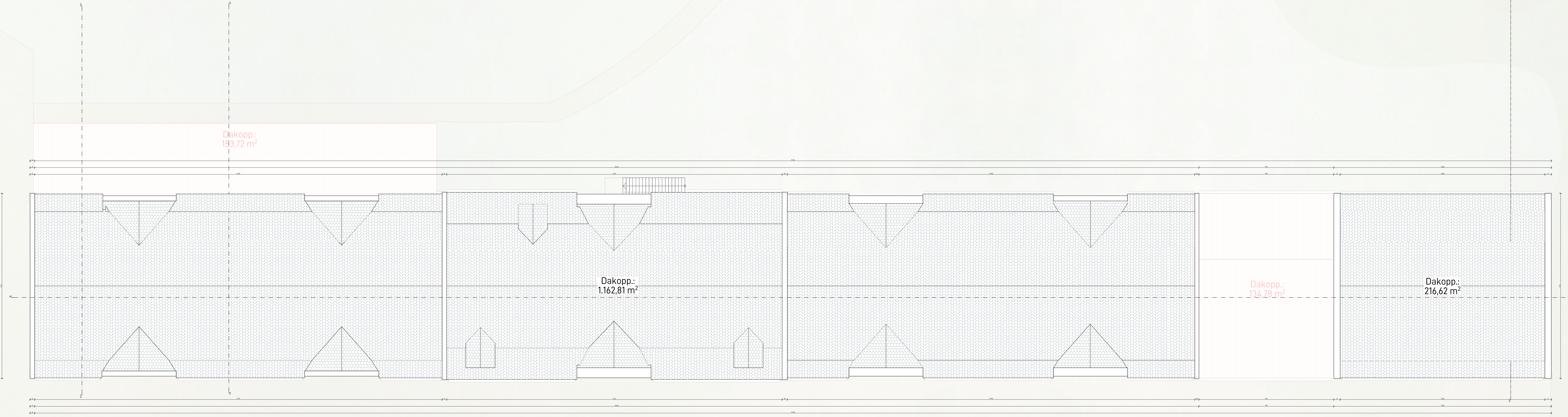
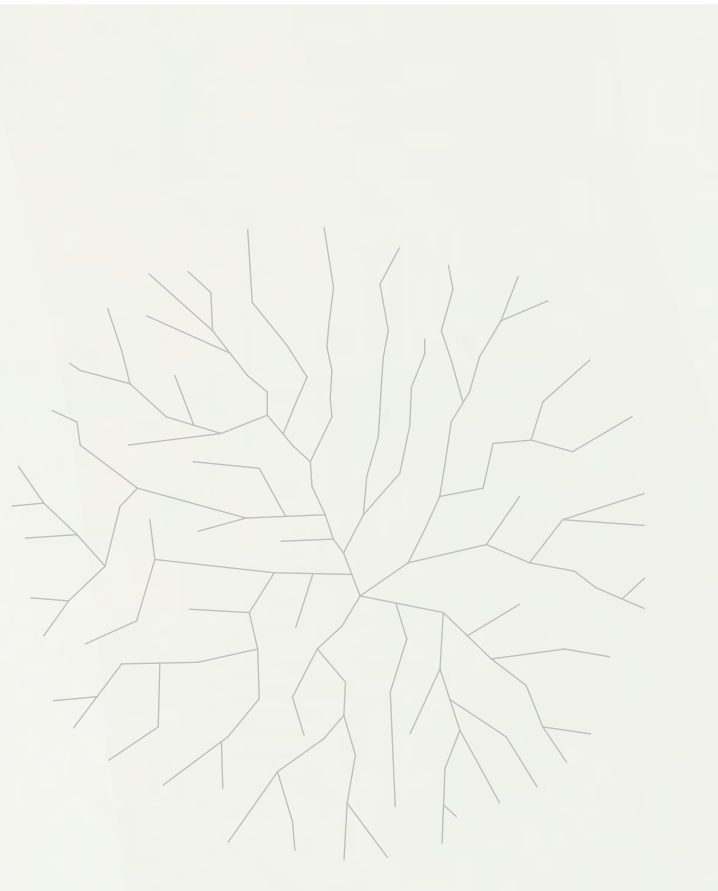


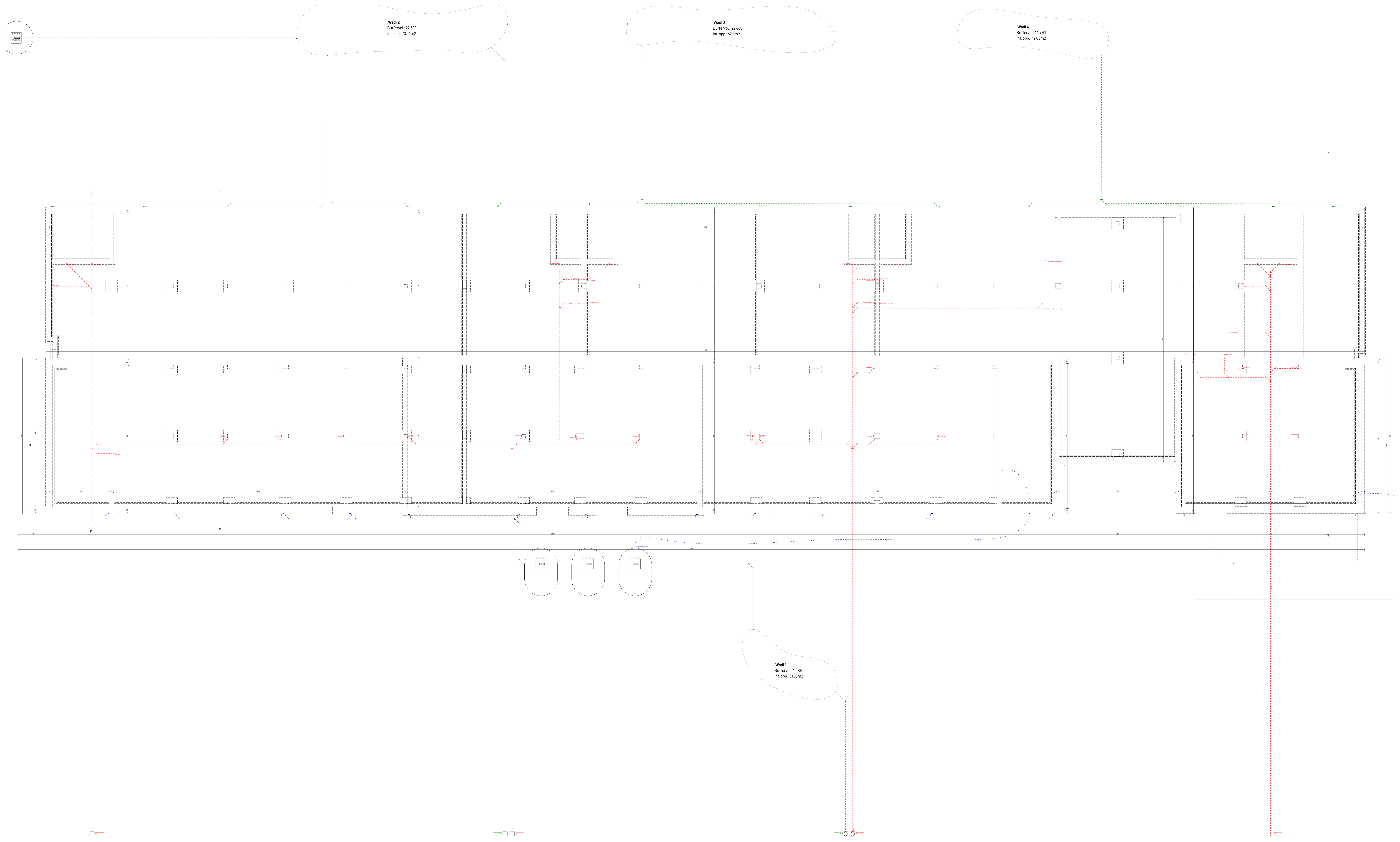
Wadi 2
Buffervol: 27.580l
Int. opp: 73,24m²







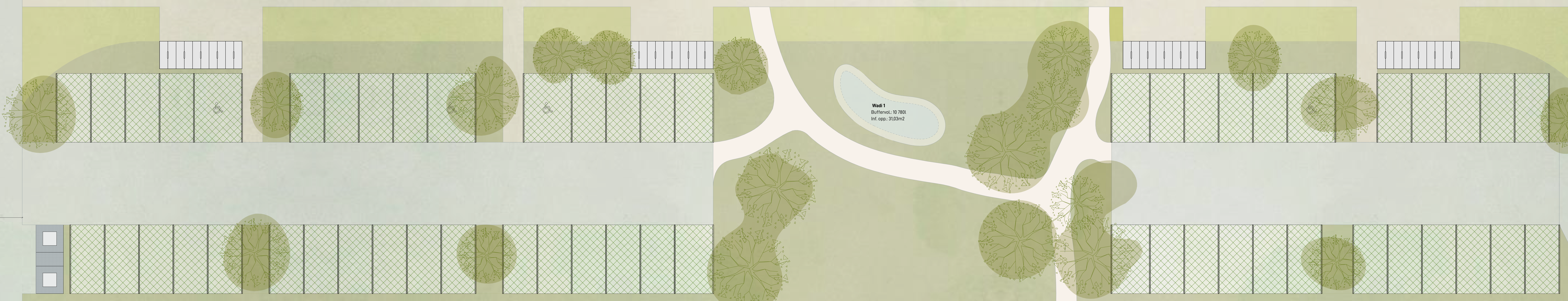
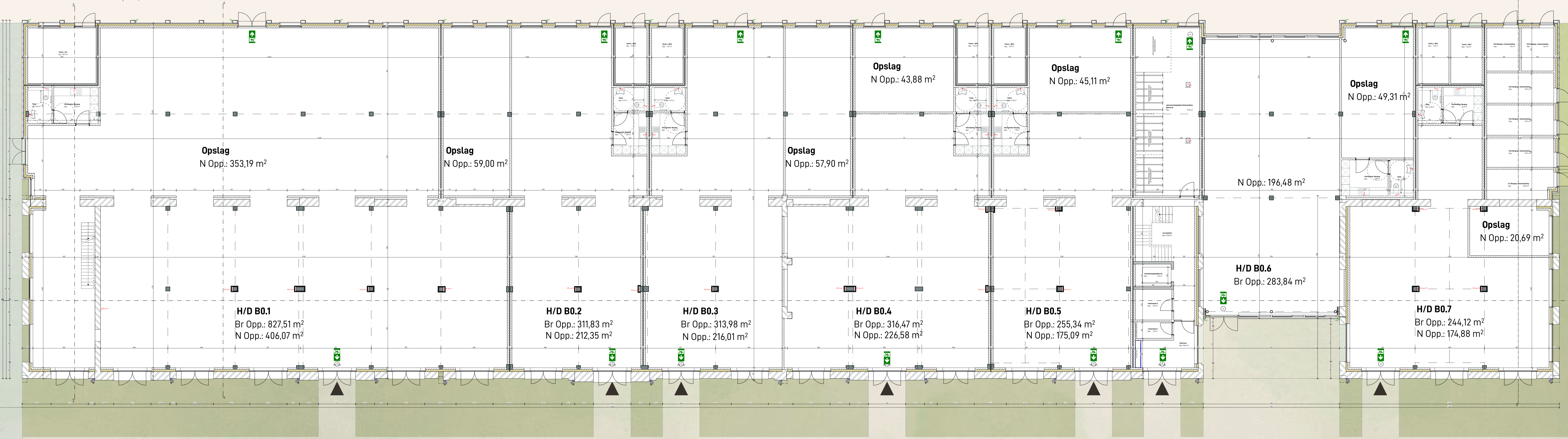


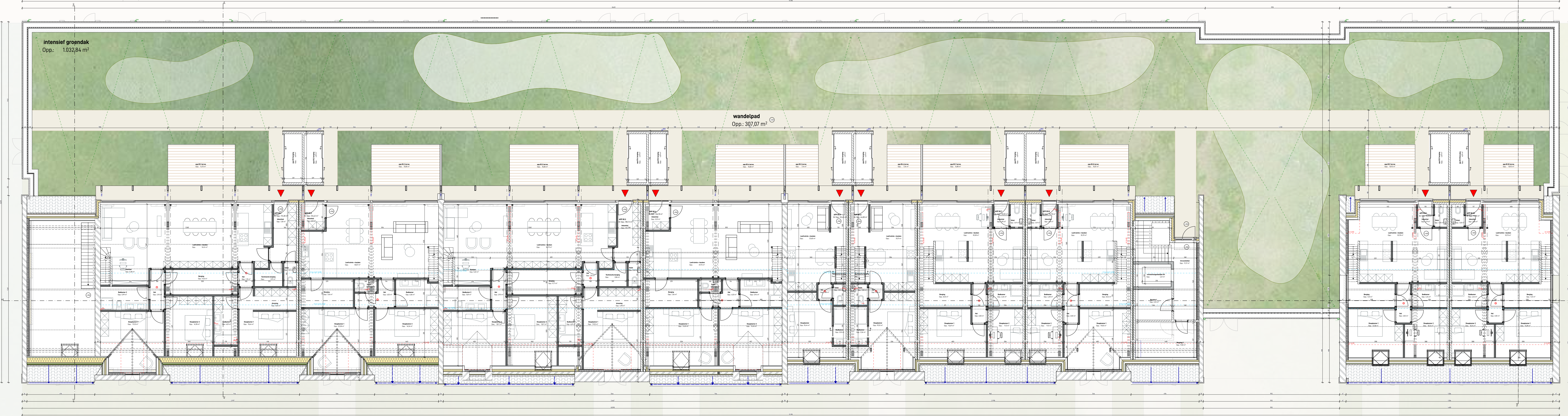


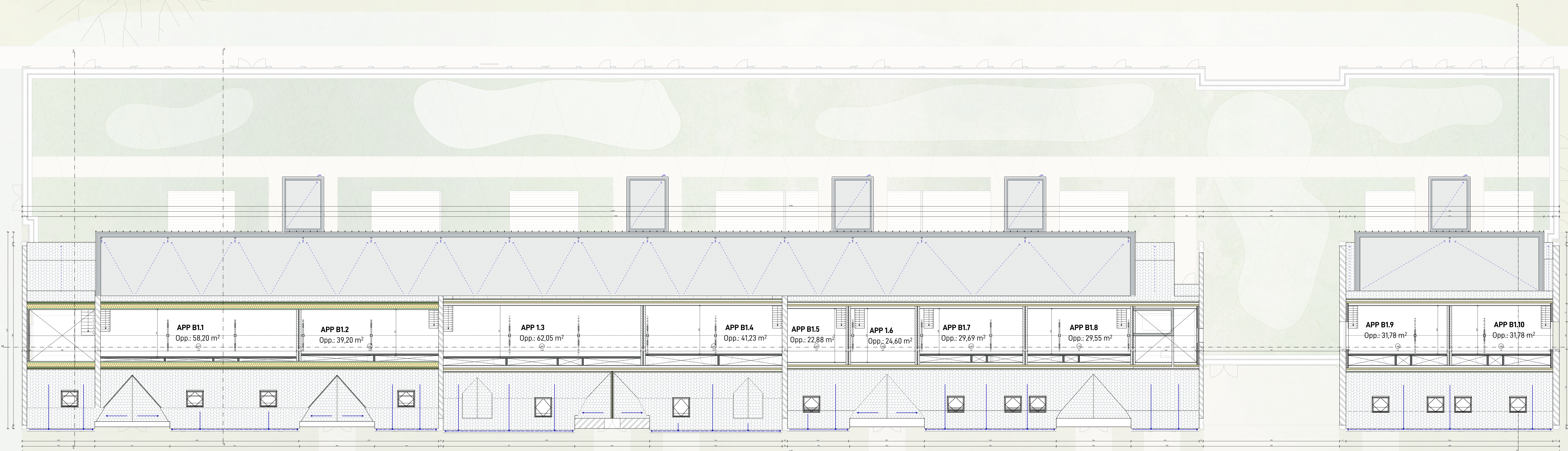
Wadi 2
 Buffervol.: 27.580l
 Inf. opp.: 73,24m²

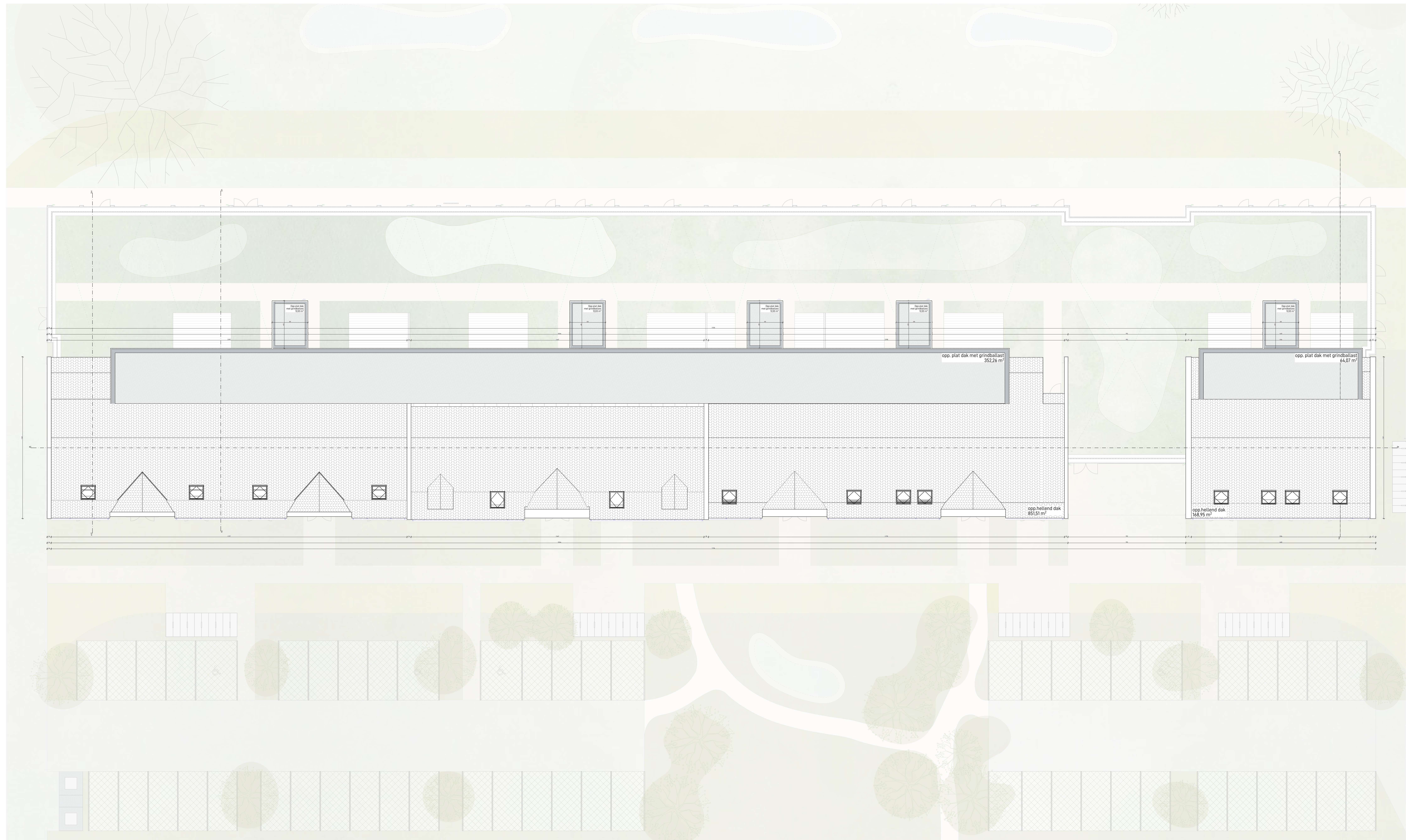
Wadi 3
 Buffervol.: 22.660l
 Inf. opp.: 62,6m²

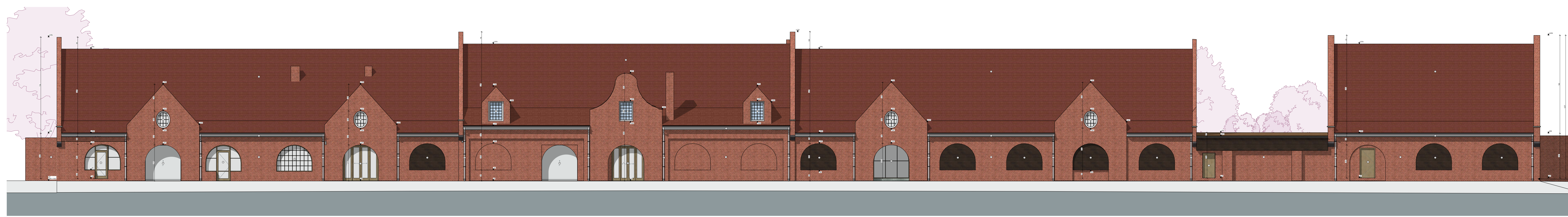
Wadi 4
 Buffervol.: 14.970l
 Inf. opp.: 42,88m²

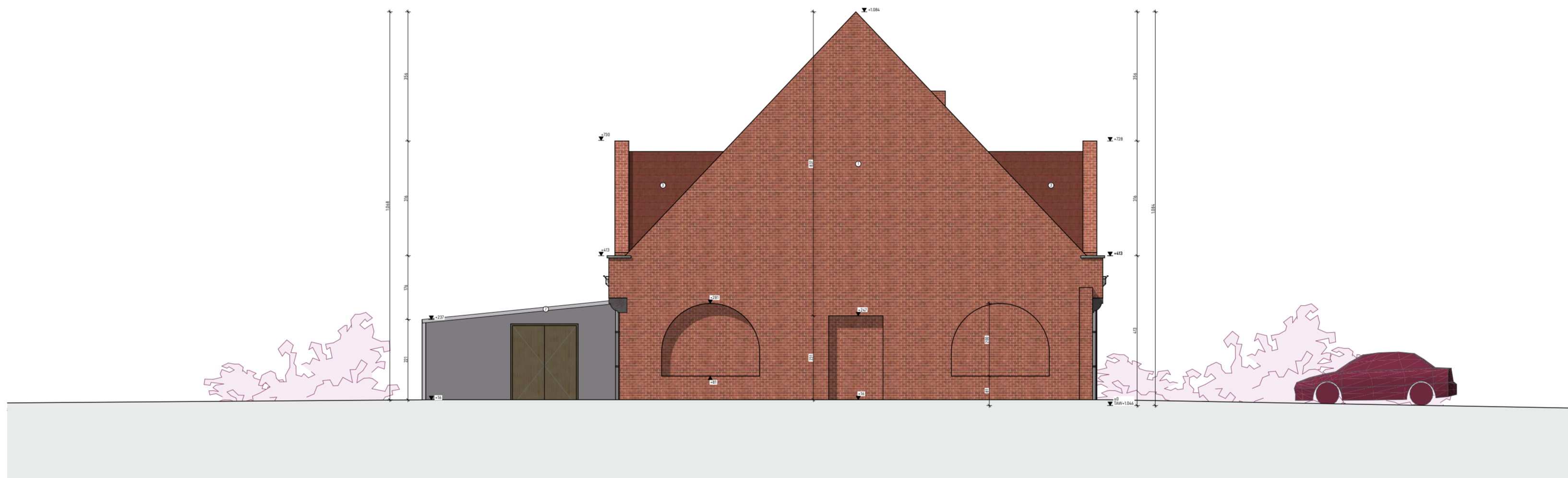












Herbestemming Noordlaan 20 - ref. 24.PCp.04

OPDRACHTGEVER: BC project & development
BOUWTERREIN: Noordlaan 20, 3630 Genk

Linkergevel BT 1:100

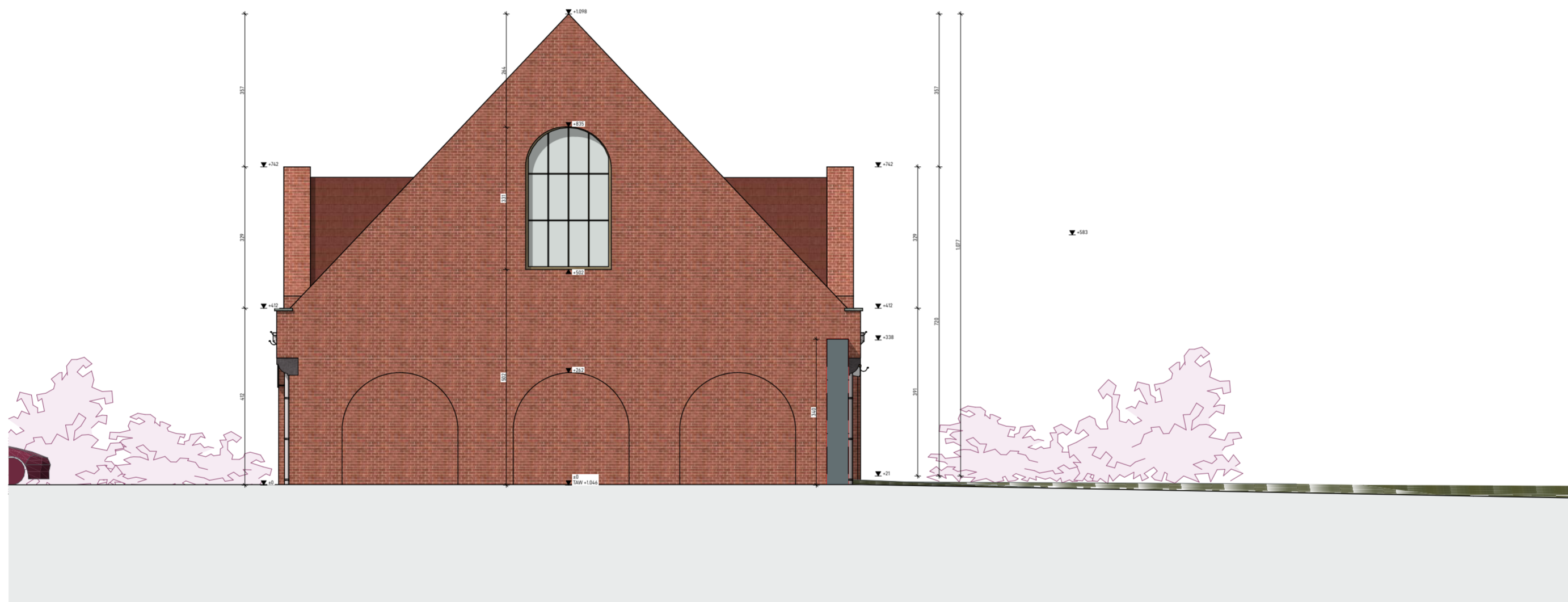
18-10-2024 - Voorontwerp

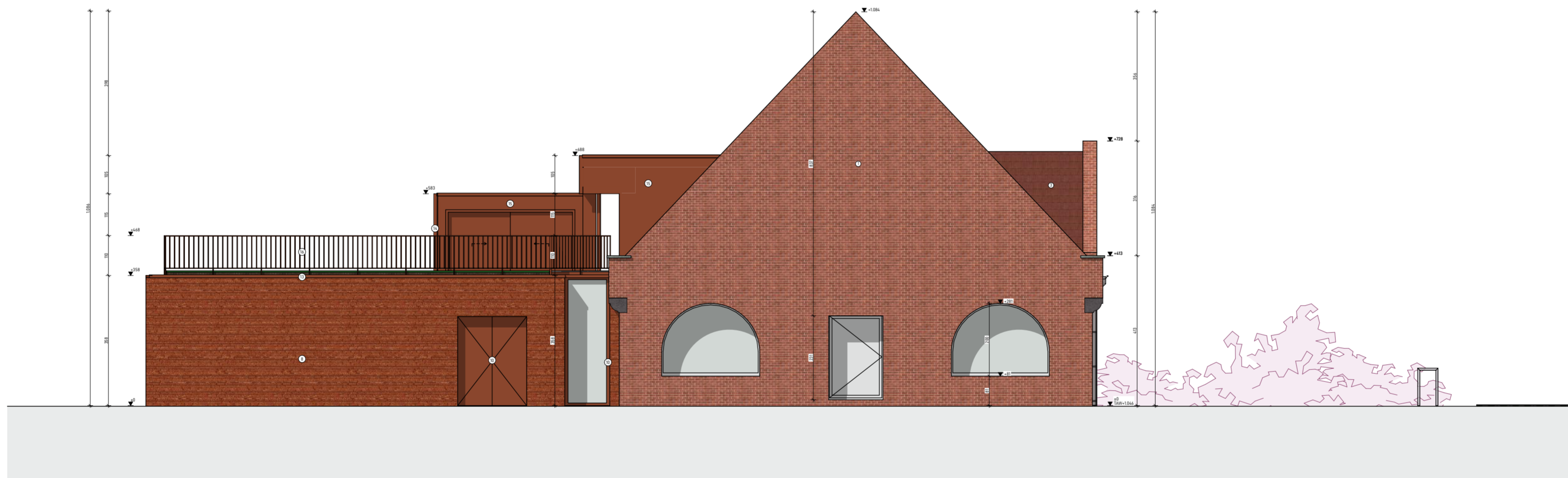
PCp architects



Emiel Van Dorenlaan 69 - B-3600 Genk
+32 (0)89 700 400 - www.pcp-architects.be







Herbestemming Noordlaan 20 - ref. 24.PCp.04

OPDRACHTGEVER: BC project & development
BOUWTERREIN: Noordlaan 20, 3630 Genk

Linkergevel NT 1:100

18-10-2024 - Voorontwerp

PCp architects



Emiel Van Dorenlaan 69 - B-3600 Genk
+32 (0)89 700 400 - www.pcp-architects.be





Herbestemming Noordlaan 20 - ref. 24.PCp.04

OPDRACHTGEVER: BC project & development
BOUWTERREIN: Noordlaan 20, 3630 Genk

Rechtergevel NT 1:100

18-10-2024 - Voorontwerp

PCp architects



Emiel Van Dorenlaan 69 - B-3600 Genk
+32 (0)89 700 400 - www.pcp-architects.be



Herbestemming Noordlaan 20

OPDRACHTGEVER: BC project & development
BOUWTERREIN: Noordlaan 20, 3630 Genk

3D impressie - Luchtbeeld voorgevel 1:1,72, 1:2,02

18-10-2024- Voorontwerp

PCp architects



Emiel Van Dorenlaan 69 - B-3600 Genk
+32 (0)89 700 400 - www.pcp-architects.be



Herbestemming Noordlaan 20

OPDRACHTGEVER: BC project & development
BOUWTERREIN: Noordlaan 20, 3630 Genk

3D impressie - Luchtbeeld achtergevel 1:1,72, 1:2,03

18-10-2024- Voorontwerp

PCp architects



Emiel Van Dorenlaan 69 - B-3600 Genk
+32 (0)89 700 400 - www.pcp-architects.be



Herbestemming Noordlaan 20

OPDRACHTGEVER: BC project & development
BOUWTERREIN: Noordlaan 20, 3630 Genk

3D impressie - Luchtbeeld grondgebonden woningen 1:1,74, 1:2,03

18-10-2024- Voorontwerp

PCp architects



Emiel Van Dorenlaan 69 - B-3600 Genk
+32 (0)89 700 400 - www.pcp-architects.be



Herbestemming Noordlaan 20

OPDRACHTGEVER: BC project & development
BOUWTERREIN: Noordlaan 20, 3630 Genk

3D impressie - Straatbeeld Noordlaan 1:1,72, 1:2,01

18-10-2024- Voorontwerp

PCp architects



Emiel Van Dorenlain 69 - B-3600 Genk
+32 (0)89 700 400 - www.pcp-architects.be



Herbestemming Noordlaan 20

OPDRACHTGEVER: BC project & development
BOUWTERREIN: Noordlaan 20, 3630 Genk

3D impressie - Blok C 1:1,72, 1:2,03

18-10-2024- Voorontwerp

PCp architects



Emiel Van Dorenlaan 69 - B-3600 Genk
+32 (0)89 700 400 - www.pcp-architects.be



Herbestemming Noordlaan 20

OPDRACHTGEVER: BC project & development
BOUWTERREIN: Noordlaan 20, 3630 Genk

3D impressie - Blok C 1:1,72, 1:2,02

18-10-2024- Voorontwerp

PCp architects



Emiel Van Dorenlaan 69 - B-3600 Genk
+32 (0)89 700 400 - www.pcp-architects.be



Herbestemming Noordlaan 20

OPDRACHTGEVER: BC project & development
BOUWTERREIN: Noordlaan 20, 3630 Genk

3D impressie - Blok C achtergevel 1:1,71, 1:2,02

18-10-2024- Voorontwerp

PCp architects



Emiel Van Dorenlain 69 - B-3600 Genk
+32 (0)89 700 400 - www.pcp-architects.be