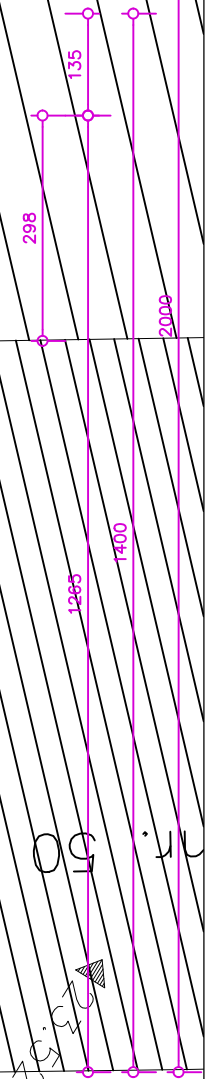
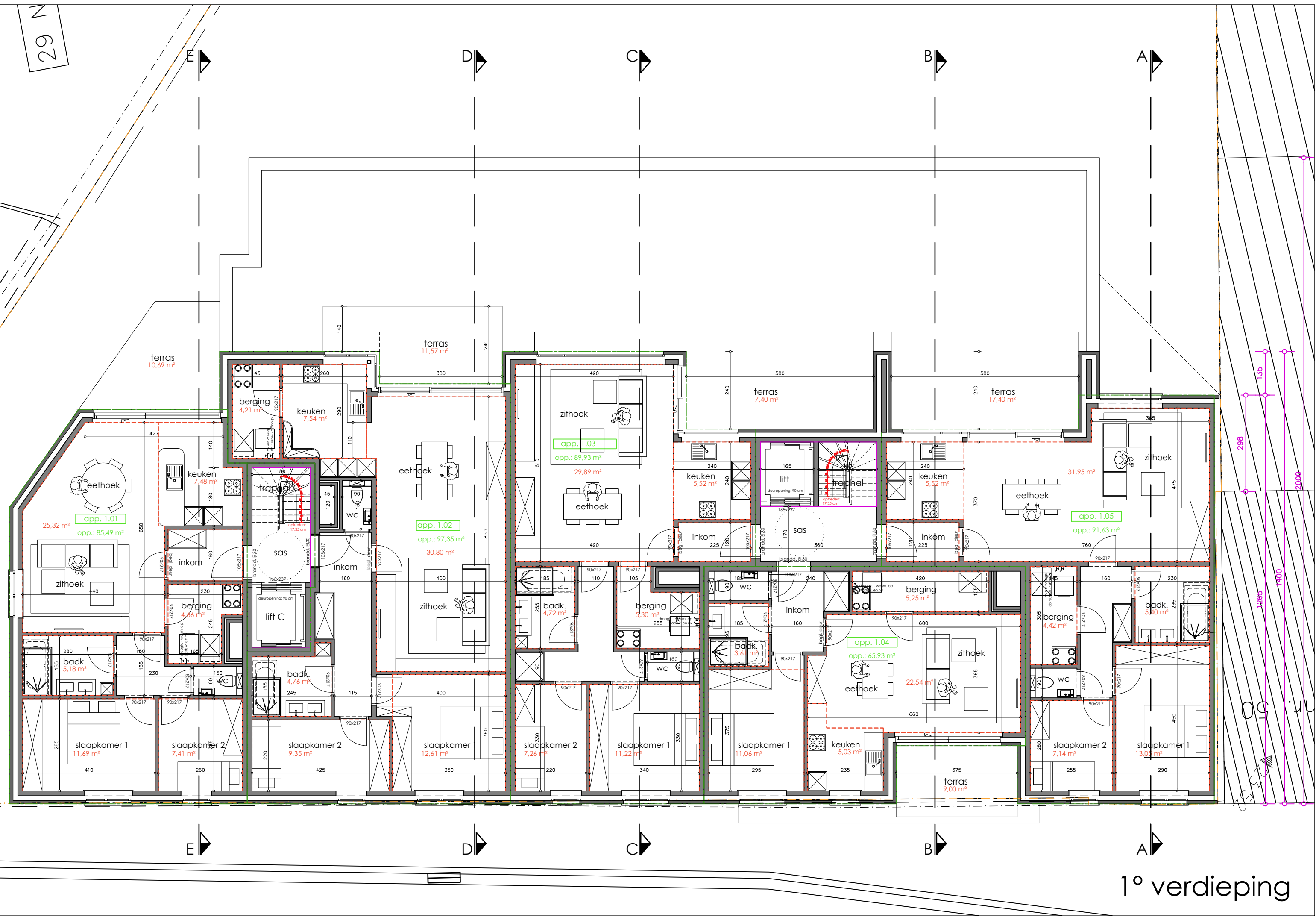


gelijkvloers

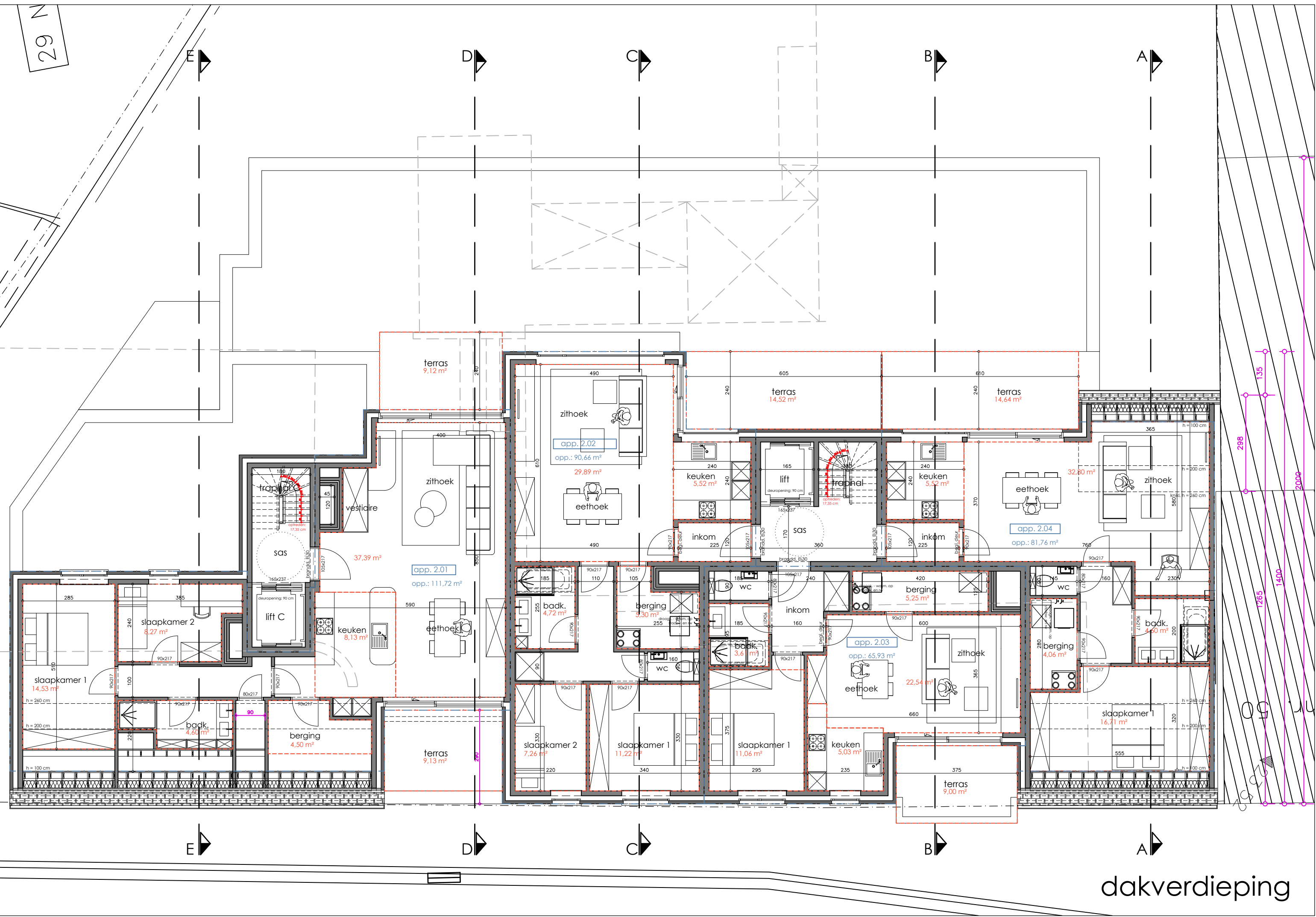
29 N



1° verdieping

29 N

E D C B A



dakverdieping

Ⓐ oppervlakte perceel: 3 103 m<sup>2</sup> Ⓐ

Ⓑ oppervlakte app.: 677,16 m<sup>2</sup>

opp. fietsen: 65,33 m<sup>2</sup>

opp. garages: 71,88 + 178,80 m<sup>2</sup> = 250,68 m<sup>2</sup>

+ = 993,17 m<sup>2</sup> Ⓑ

Ⓒ oppervlakte aaneengesloten groen (excl. private tuintjes)

Ⓐ - Ⓑ = 2 109,83 m<sup>2</sup>

+ opp. private tuintjes:

1.01 57,27 m<sup>2</sup>

1.02 106,08 m<sup>2</sup>

1.03 58,80 m<sup>2</sup>

1.04 68,95 m<sup>2</sup>

+ = 291,10 m<sup>2</sup>

+ wadi = ± 70 m<sup>2</sup>

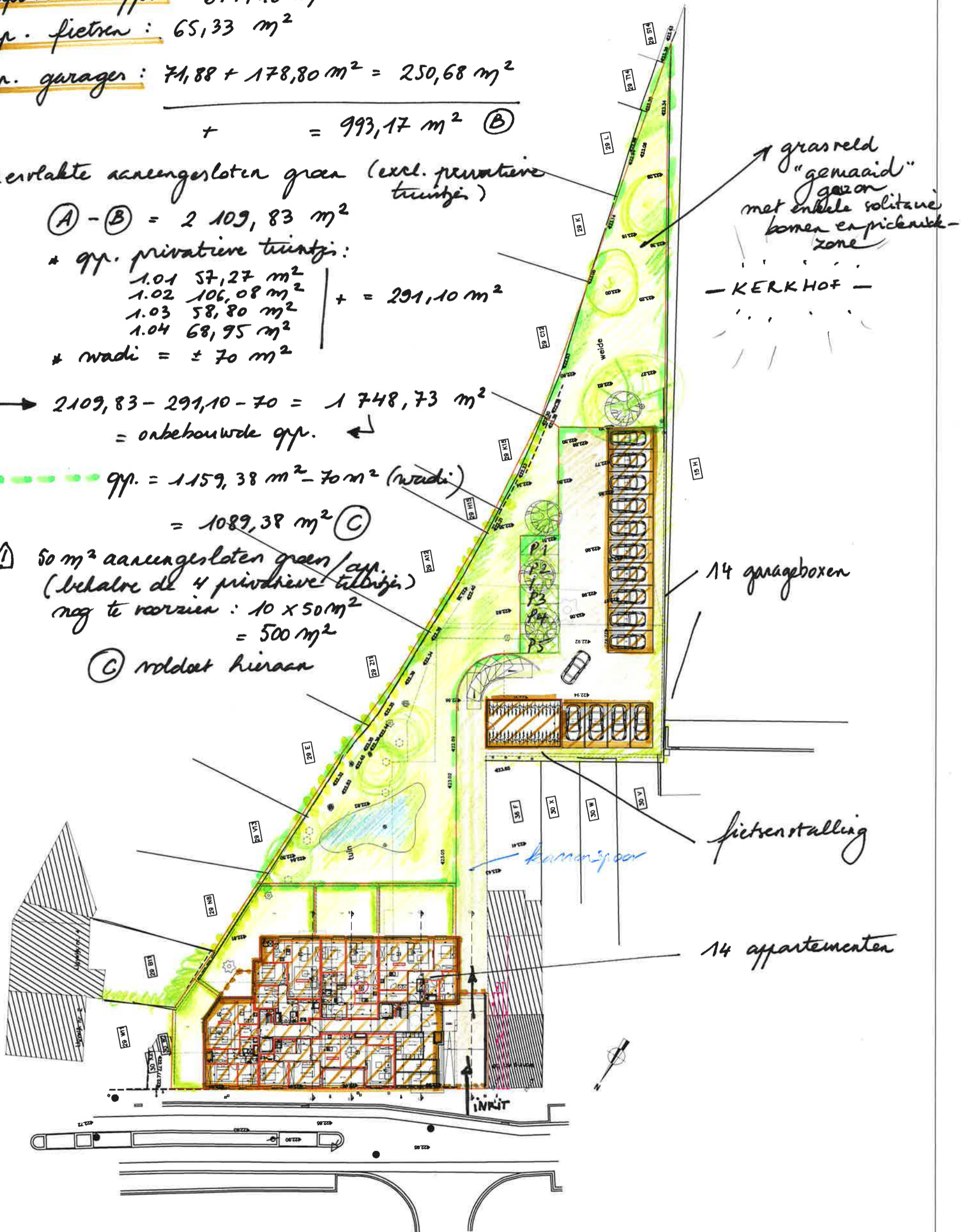
→ 2 109,83 - 291,10 - 70 = 1 748,73 m<sup>2</sup>  
= onbebouwde opp. ←

opp. = 1 159,38 m<sup>2</sup> - 70 m<sup>2</sup> (wadi)

= 1 089,38 m<sup>2</sup> Ⓒ

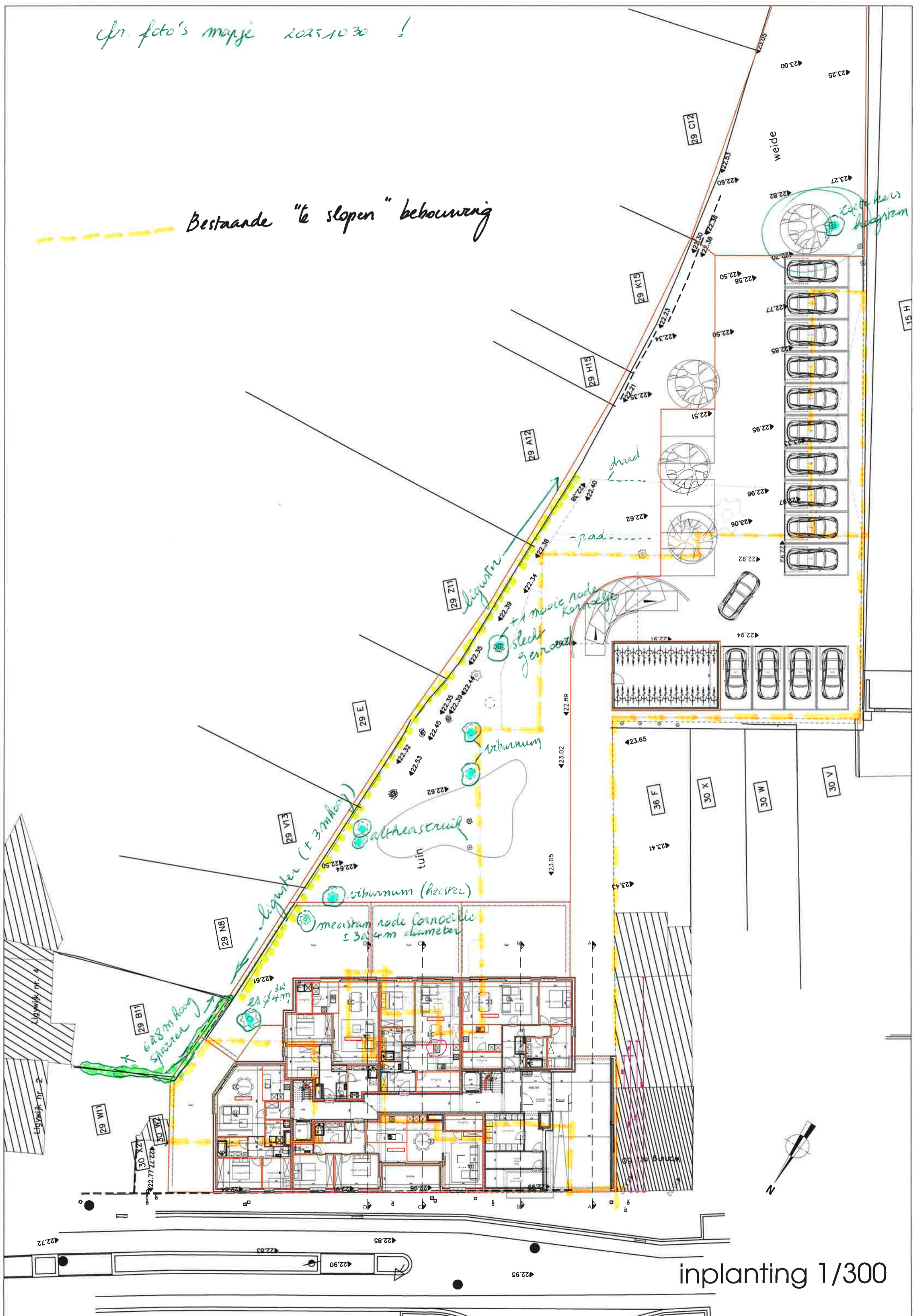
Ⓐ 50 m<sup>2</sup> aaneengesloten groen/opp.  
(behalve de 4 private tuintjes)  
nog te voorzien: 10 x 50 m<sup>2</sup>  
= 500 m<sup>2</sup>

Ⓒ voldoet hieraan

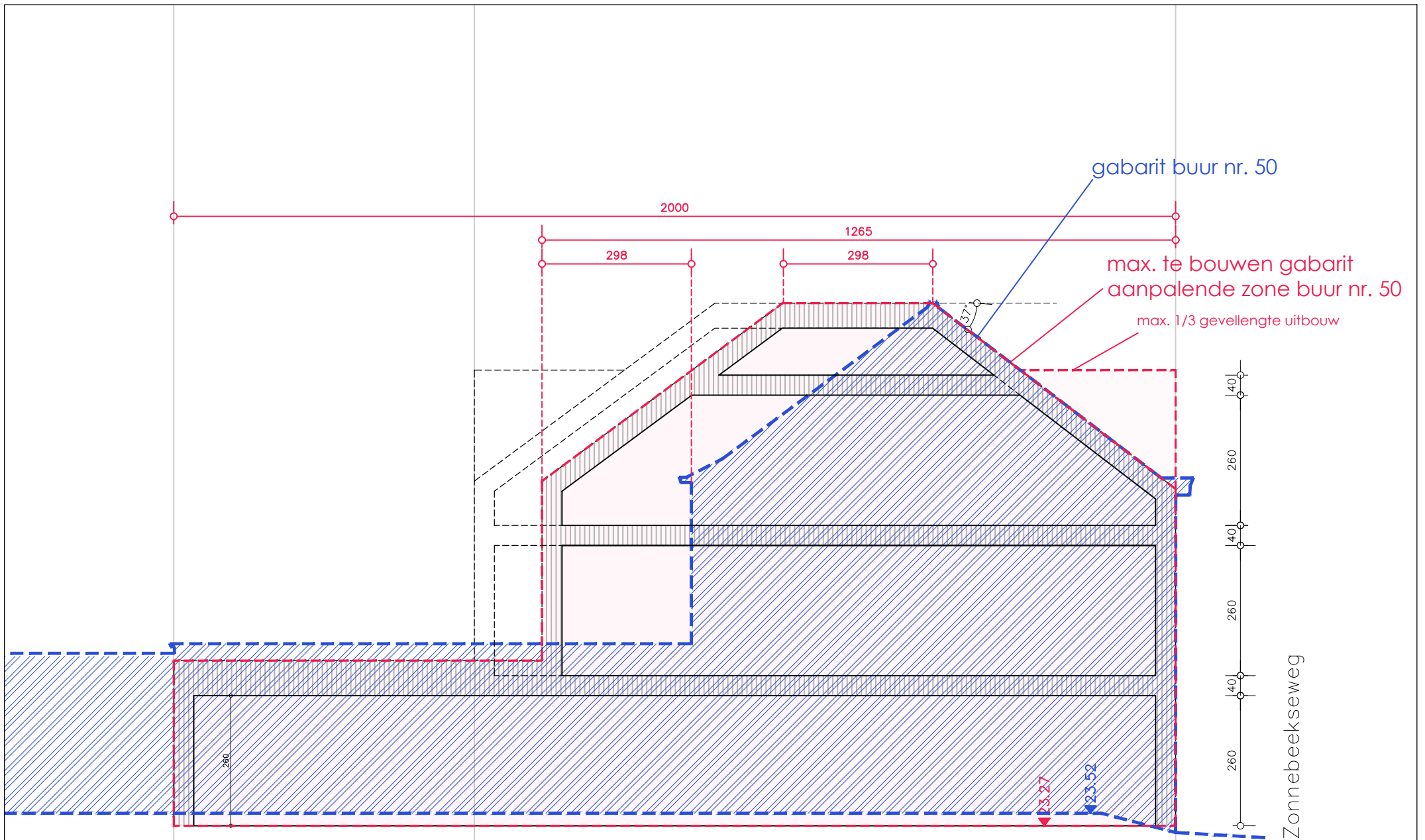


cf. foto's mapje 2025.10.30 !

Bestaande "te slopen" bebouwing



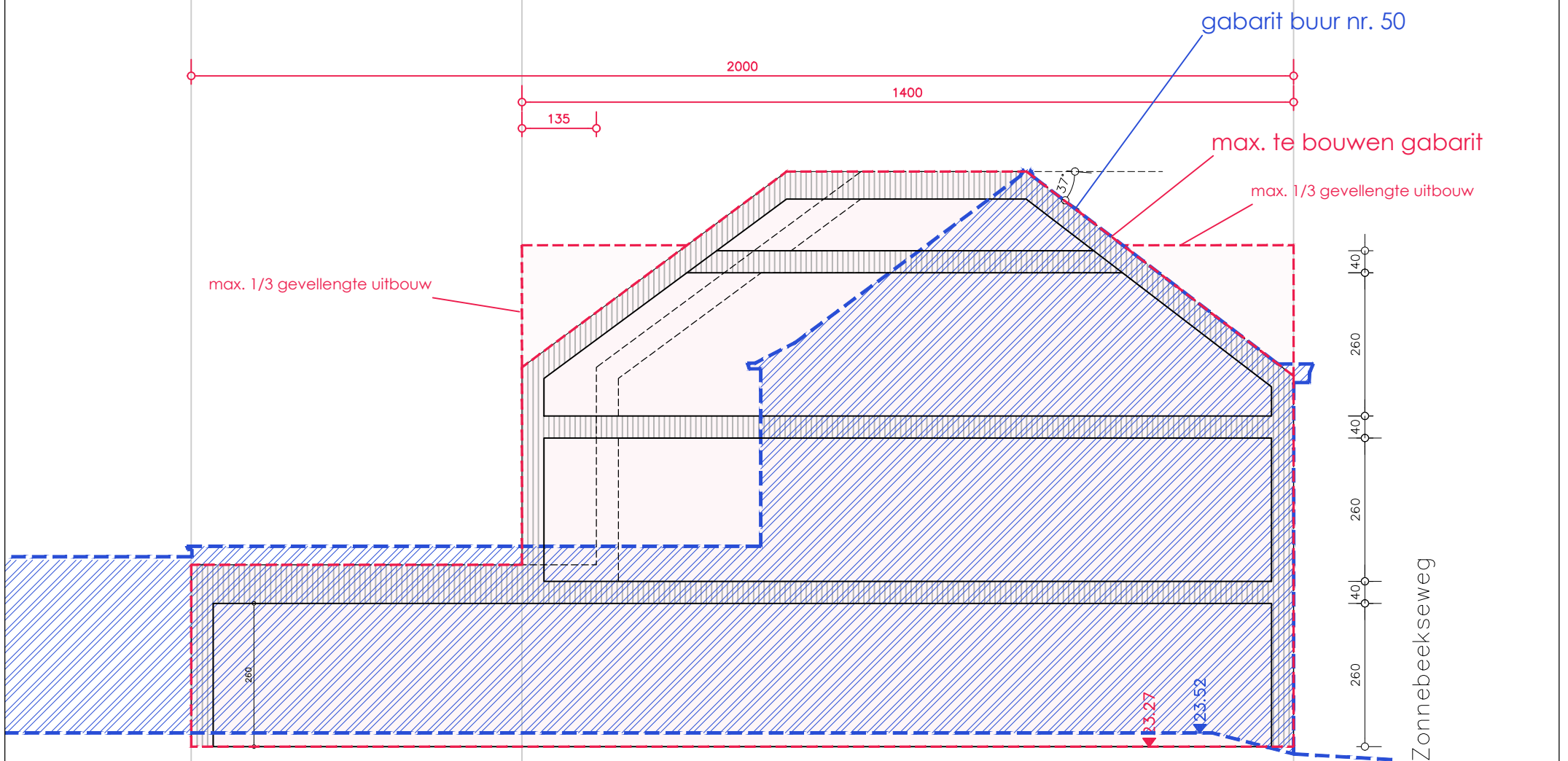
inplanting 1/300



### principedoorsnede 1

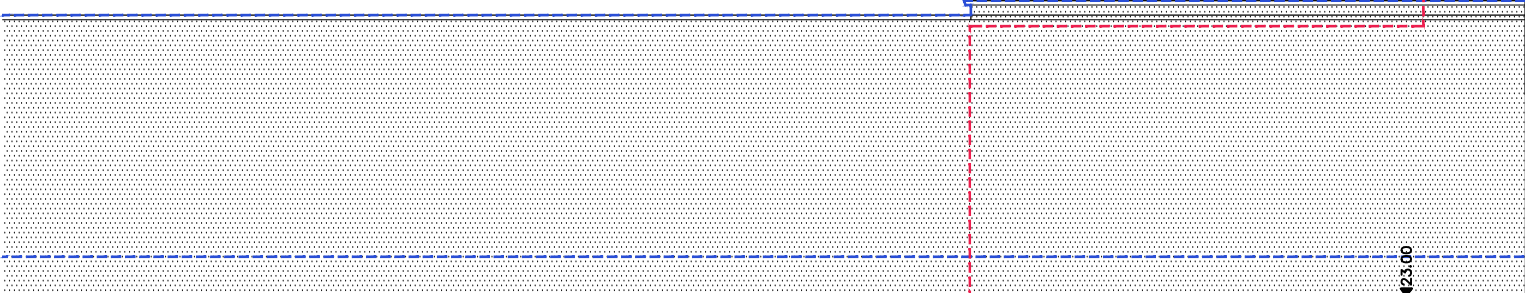
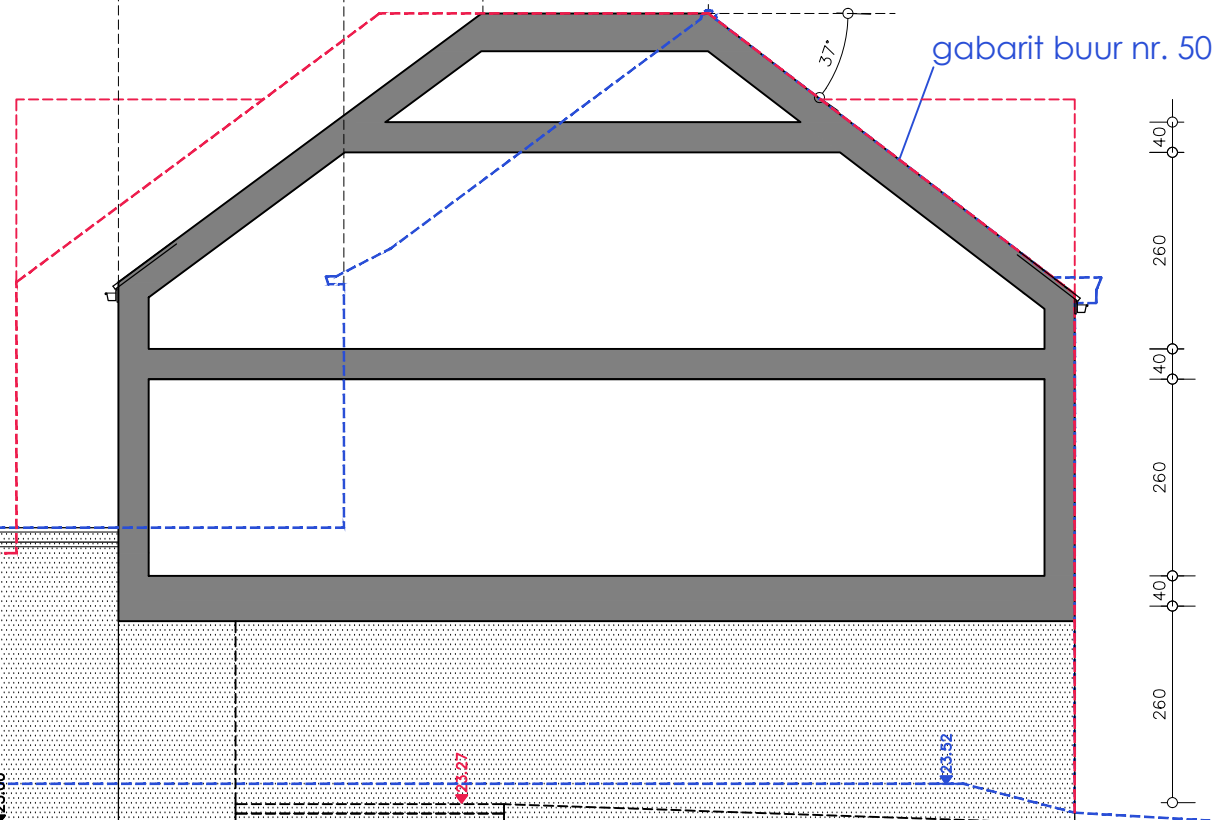
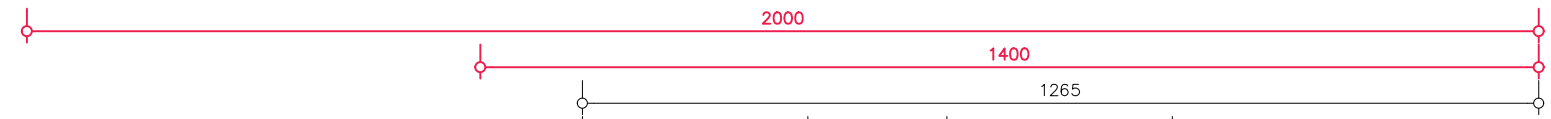
gabarit buur nr. 50 <-> max. te bouwen (gemeentelijke verordening)

**zone aanpalend aan buur nr. 50**



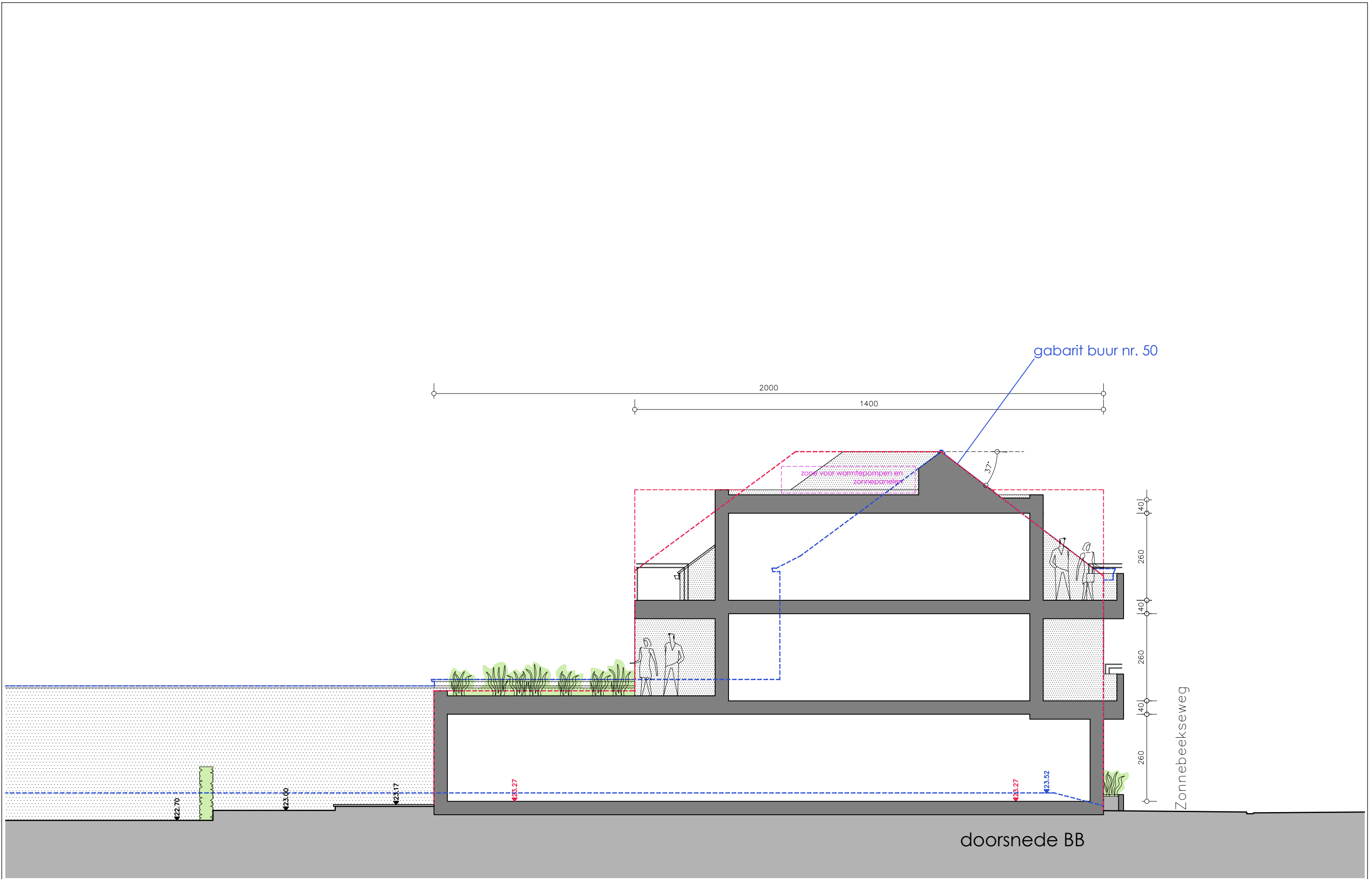
### principedoorsnede 2

gabarit buur nr. 50 <-> max. te bouwen (gemeentelijke verordening)



Zonnebeekseweg

doorsnede AA



gabarit buur nr. 50

2000  
1400

zone voor warmtepompen en zonnepanelen

37°

140  
260  
140  
260  
140  
260

Zonnebeekseweg

422.70

423.00

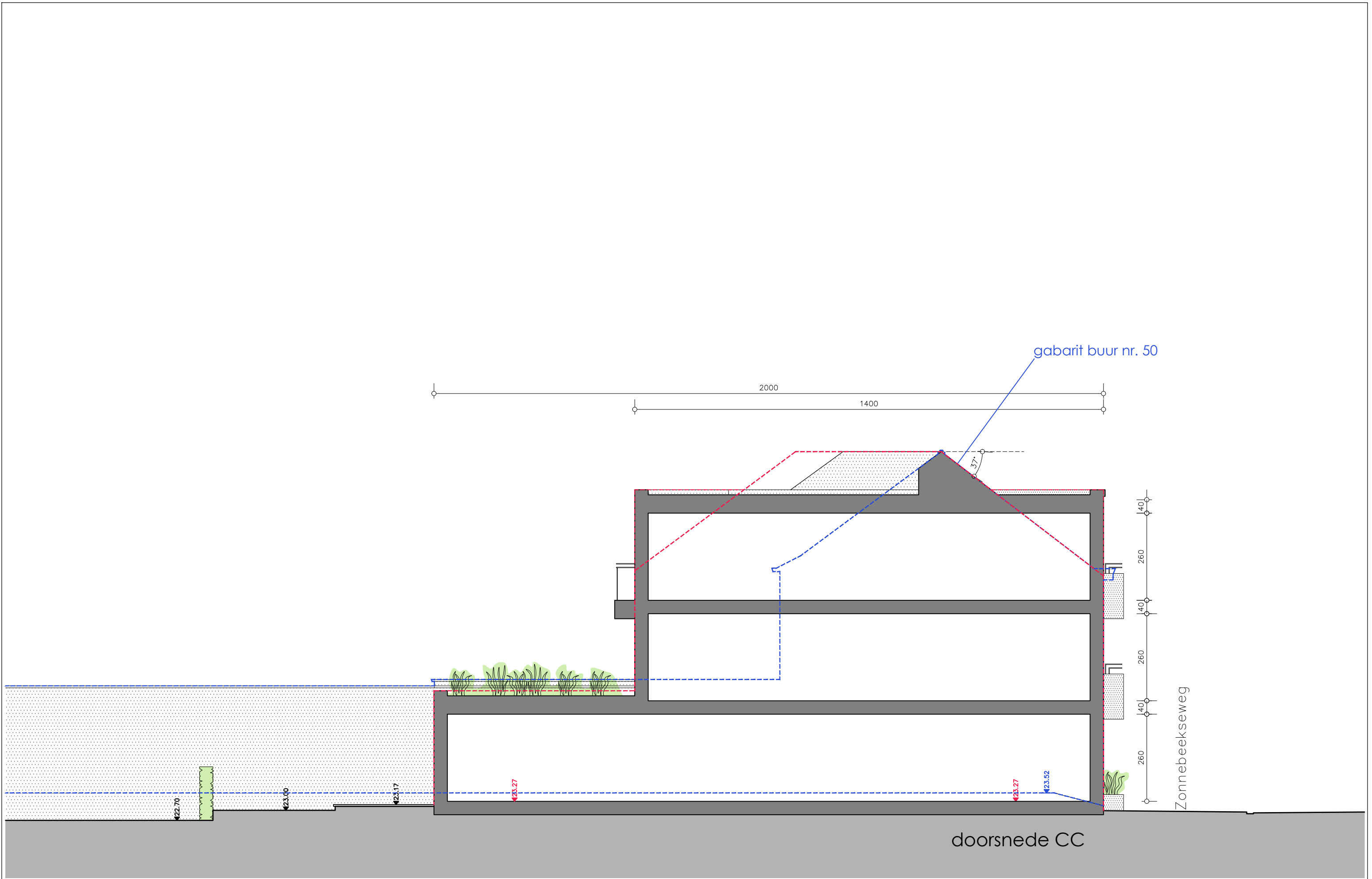
423.17

423.27

423.27

423.52

doorsnede BB



doorsnede CC

Zonnebeekseweg

