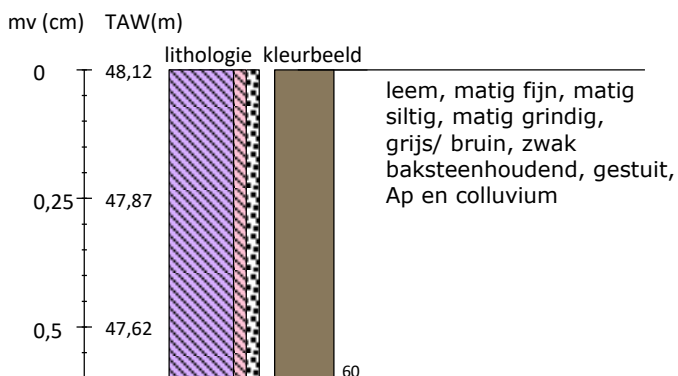
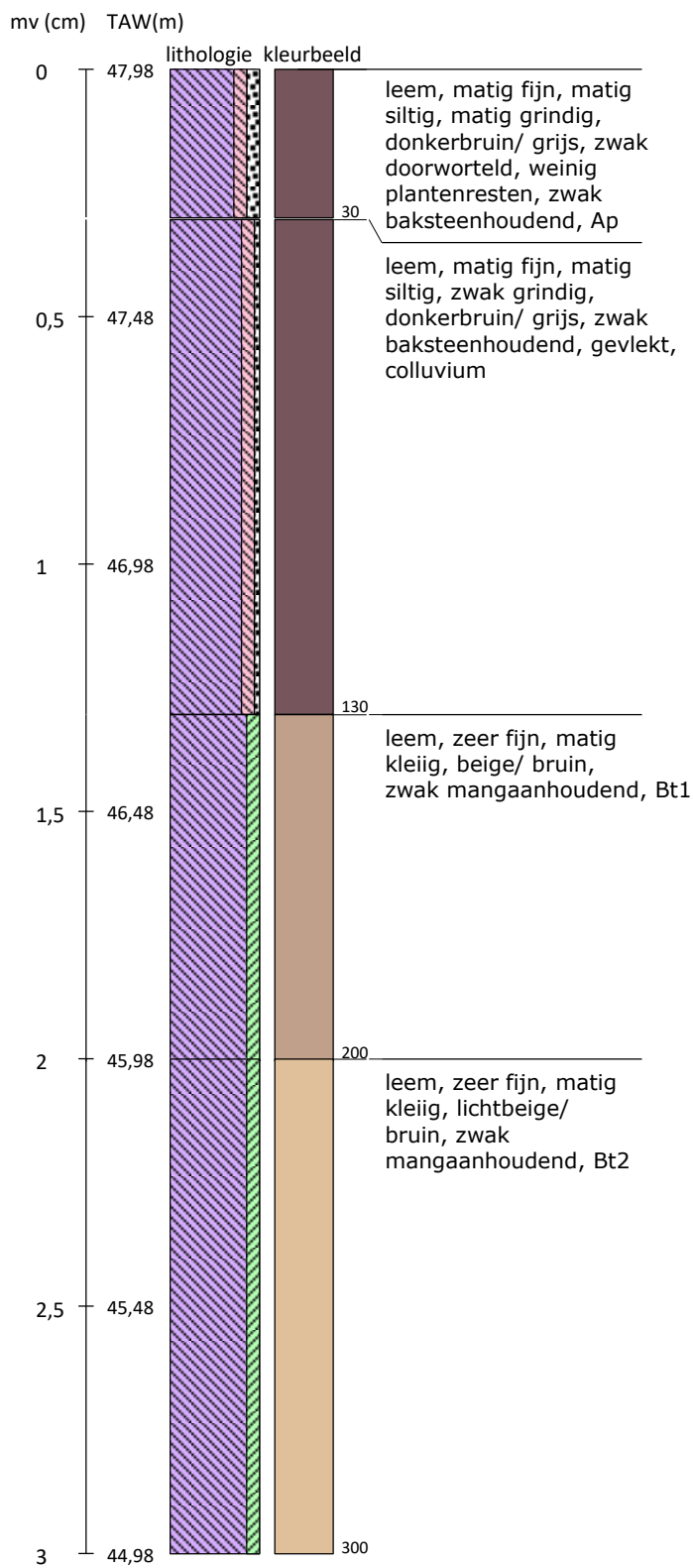


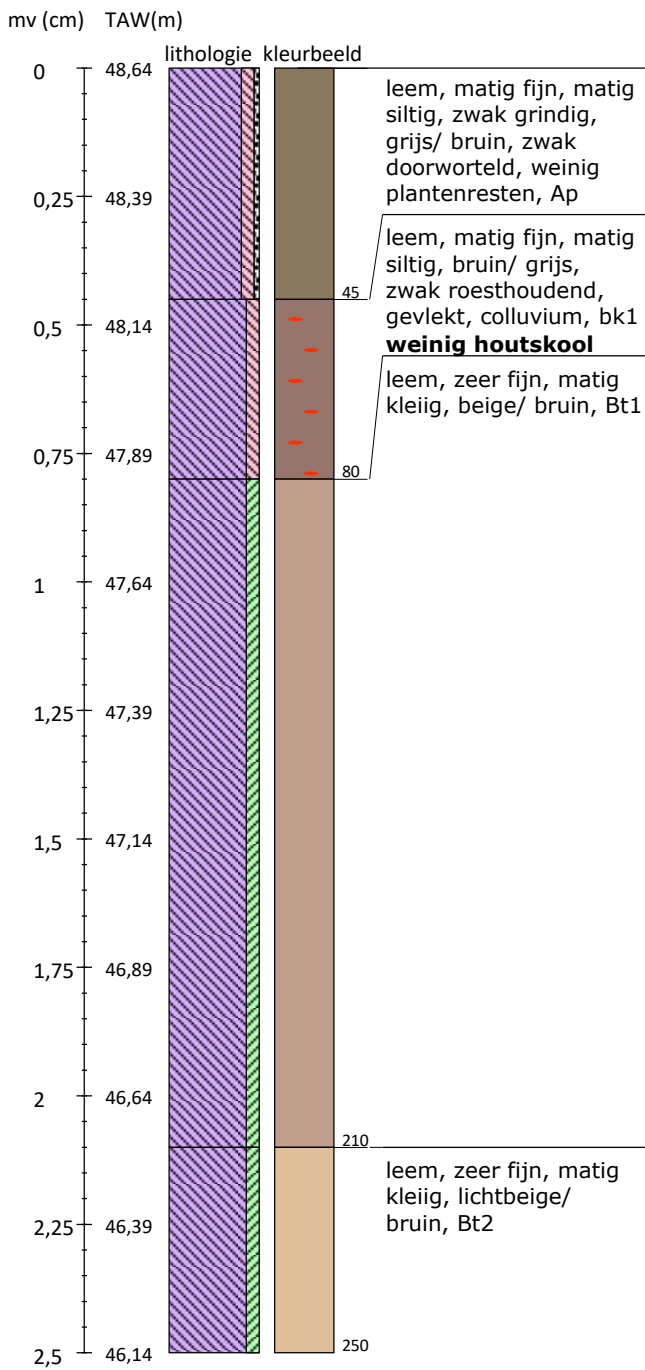
Boring 1 Lb 72-coördinaten: 145541/177802



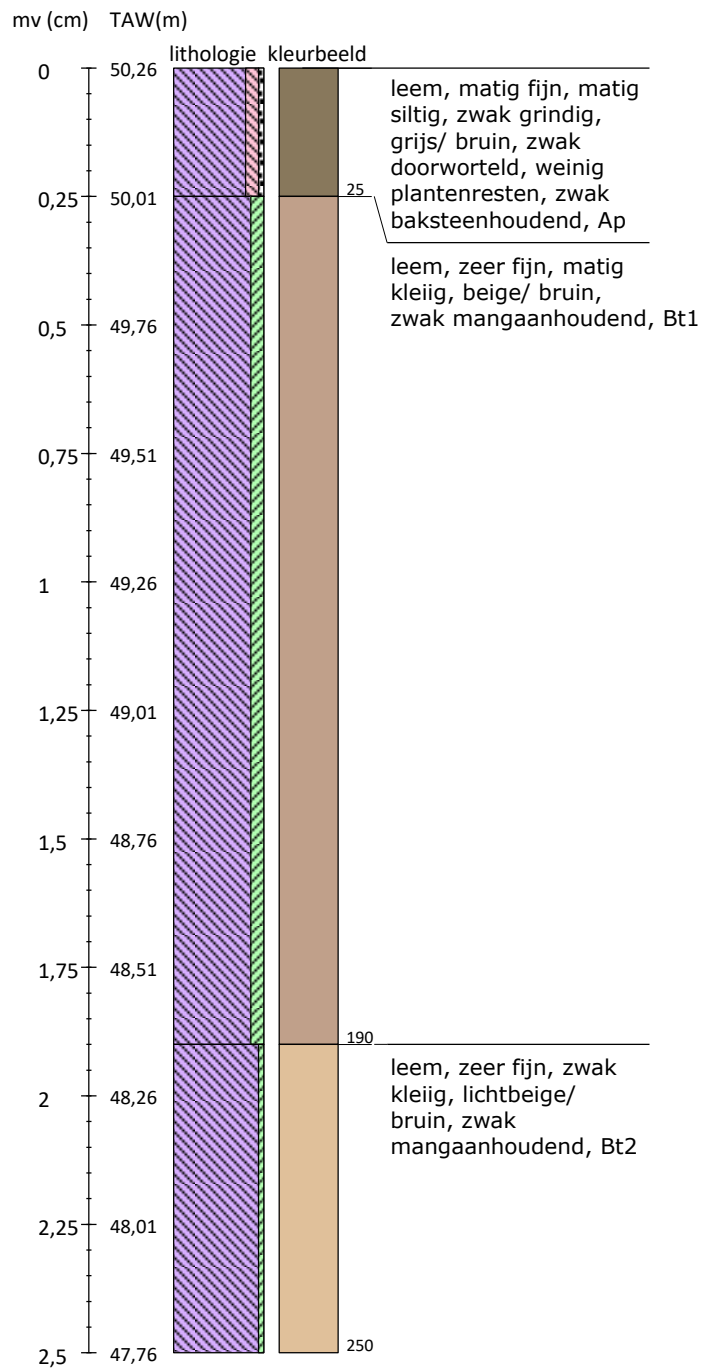
Boring 2 Lb 72-coördinaten: 145571/177792



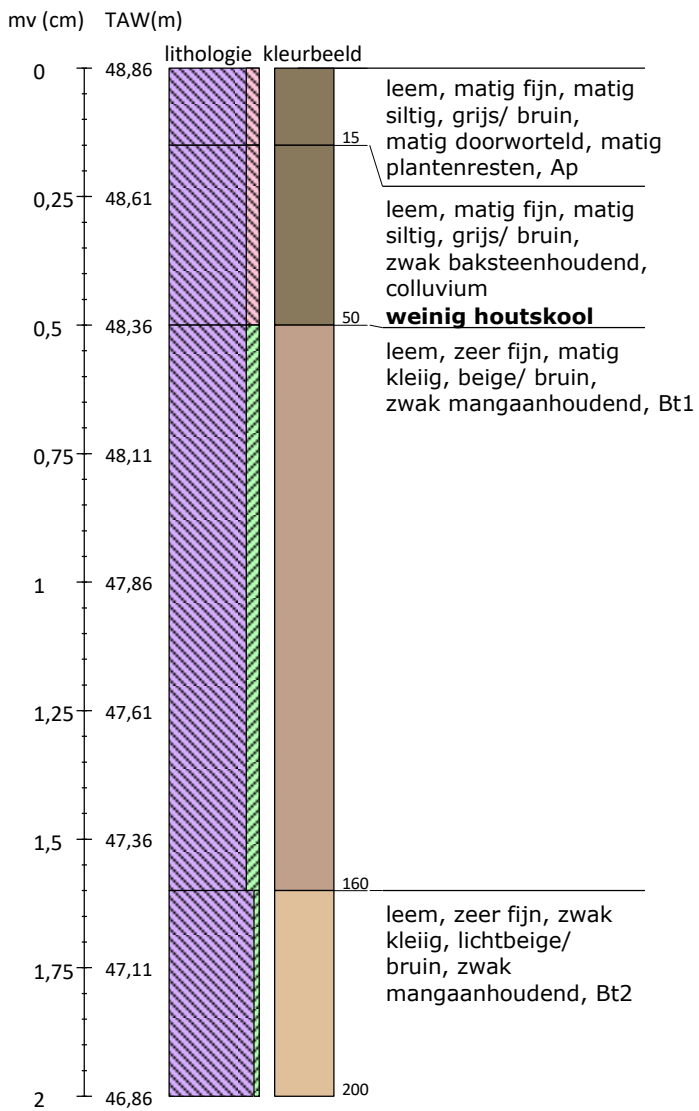
Boring 3 Lb 72-coördinaten: 145570/177831



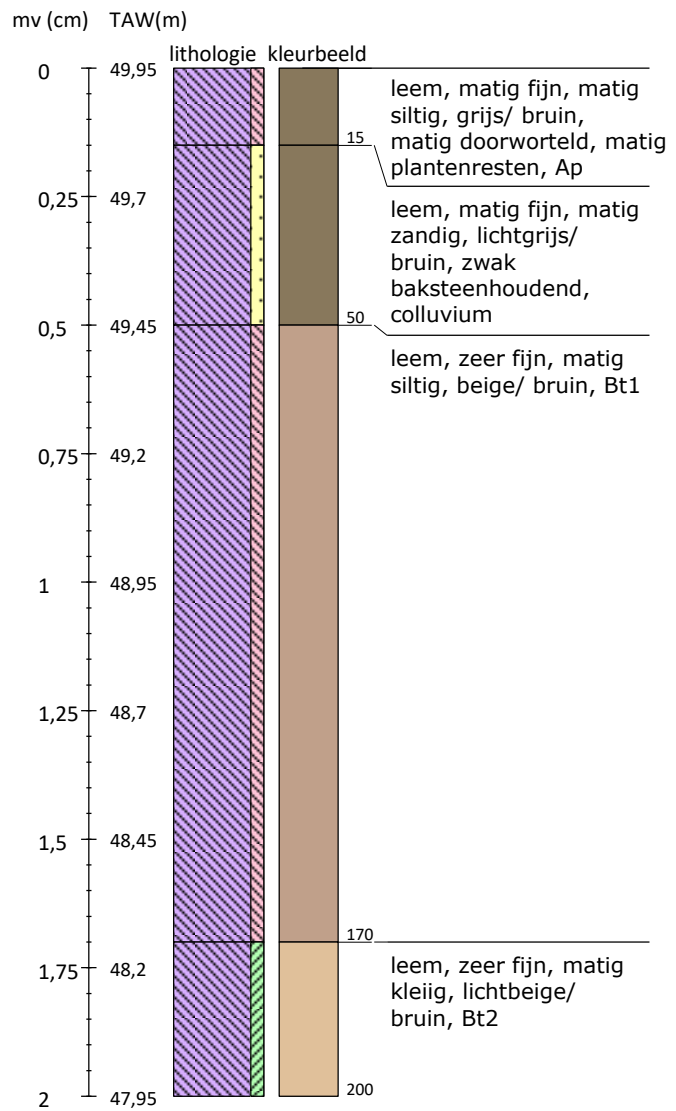
Boring 4 Lb 72-coördinaten: 145570/177872



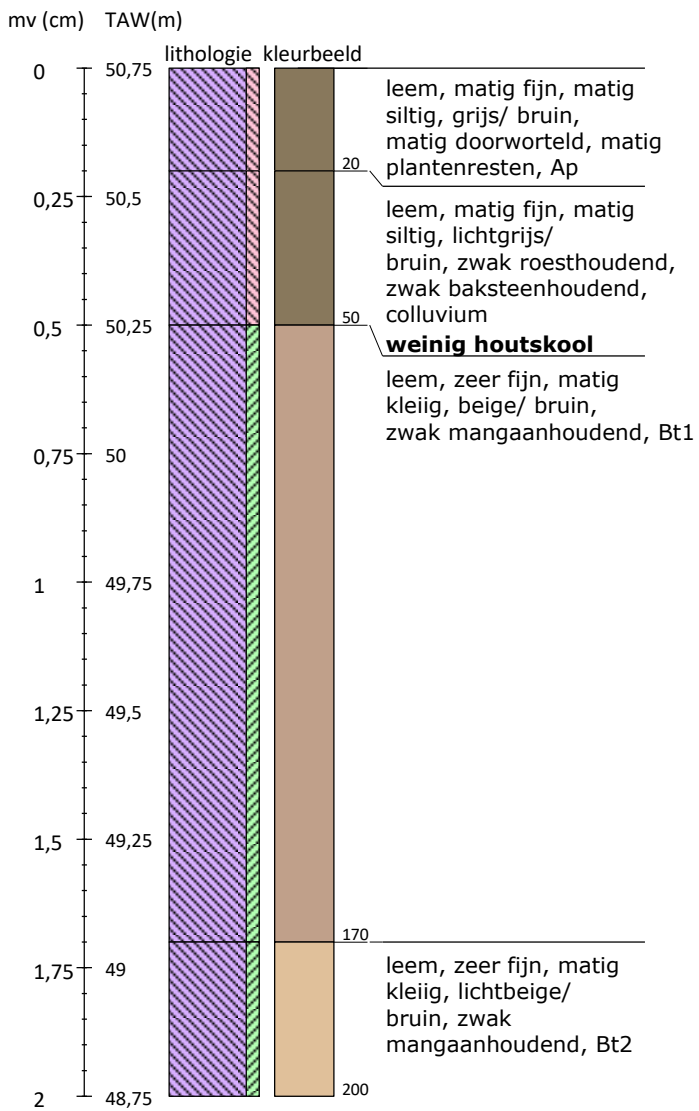
Boring 5 Lb 72-coördinaten: 145619/177822



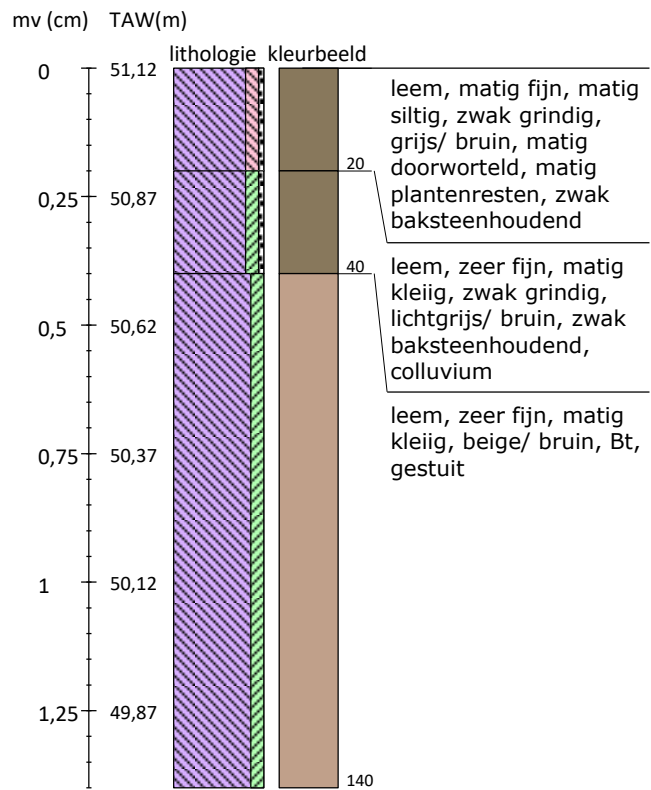
Boring 6 Lb 72-coördinaten: 145619/177862



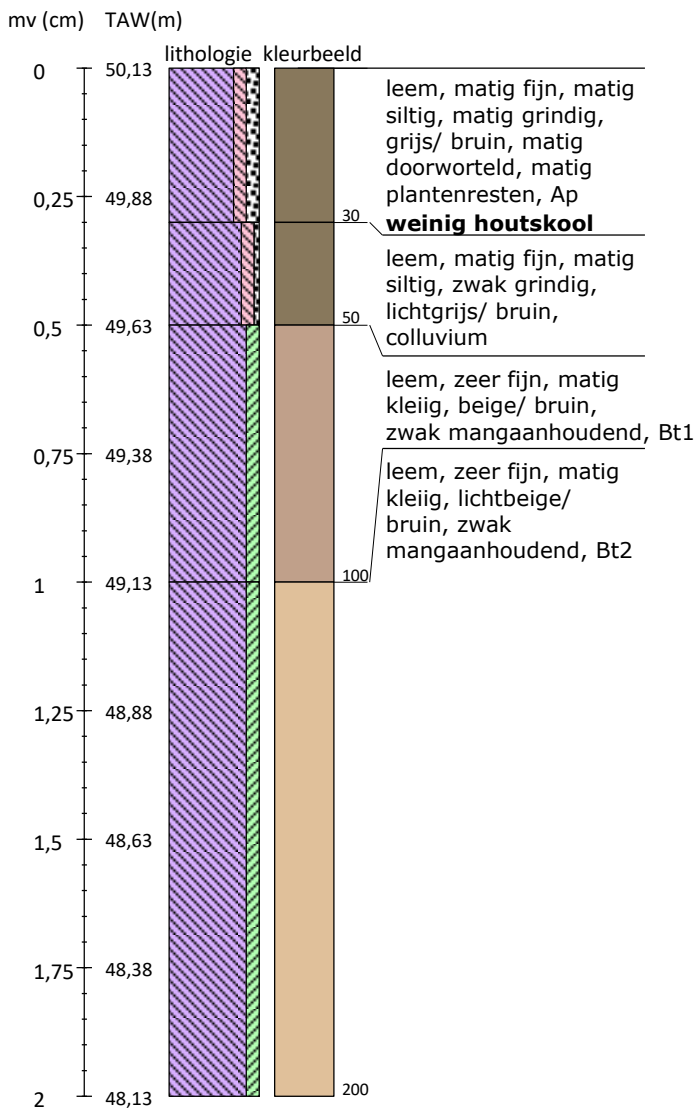
Boring 7 Lb 72-coördinaten: 145619/177902



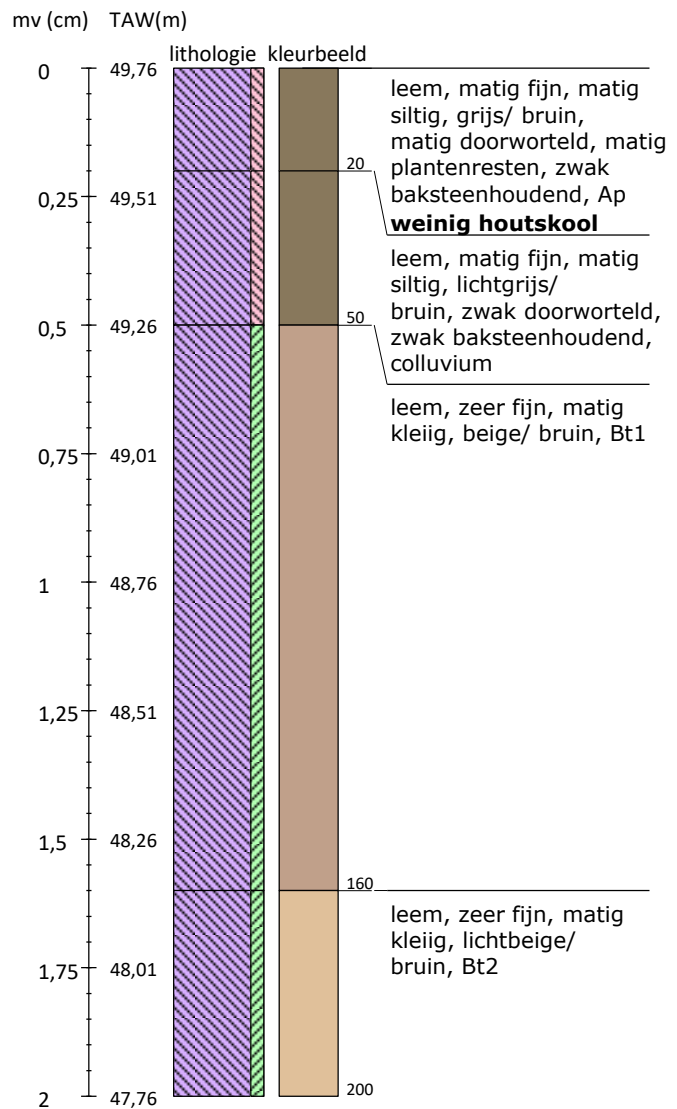
Boring 8 Lb 72-coördinaten: 145621/177936



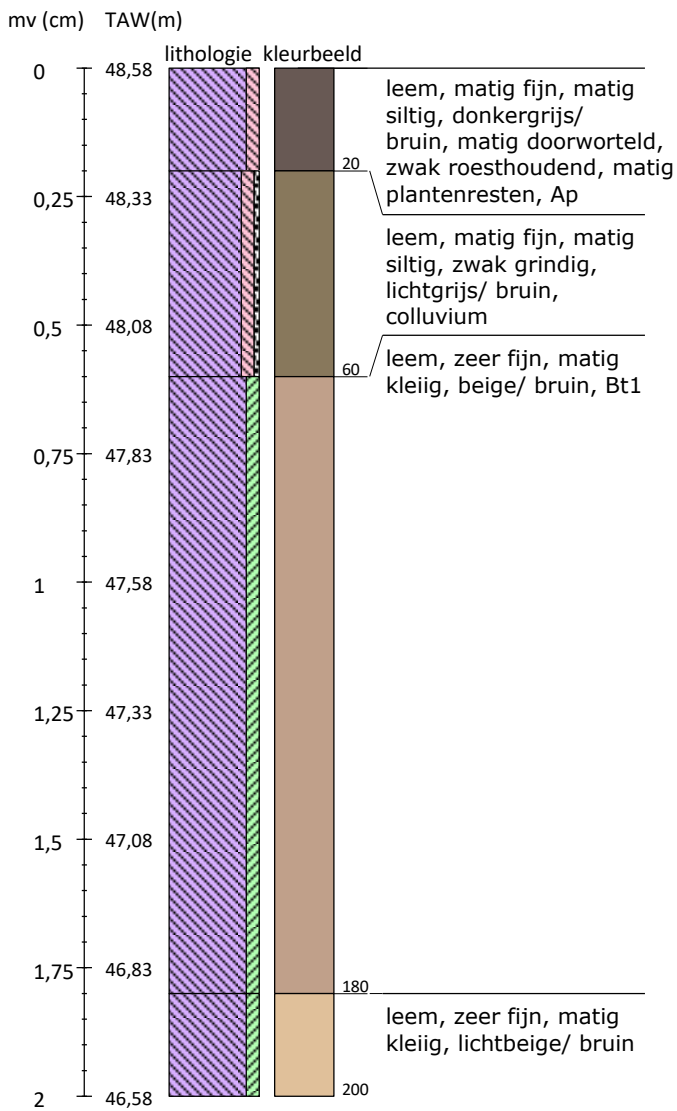
Boring 9 Lb 72-coördinaten: 145649/177902



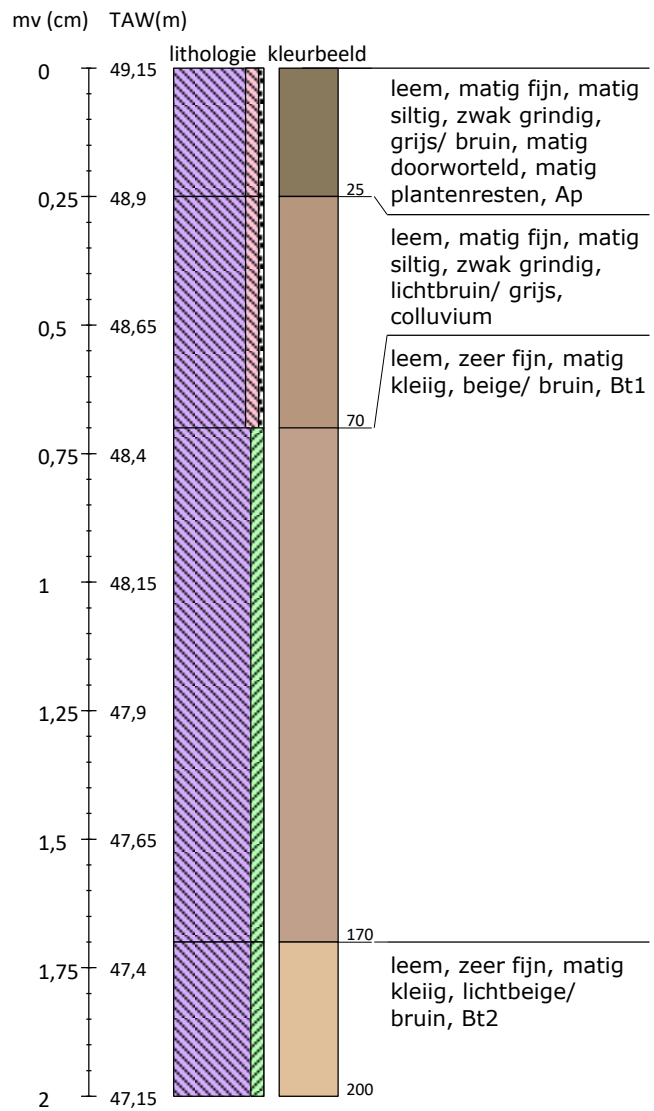
Boring 10 Lb 72-coördinaten: 145649/177862



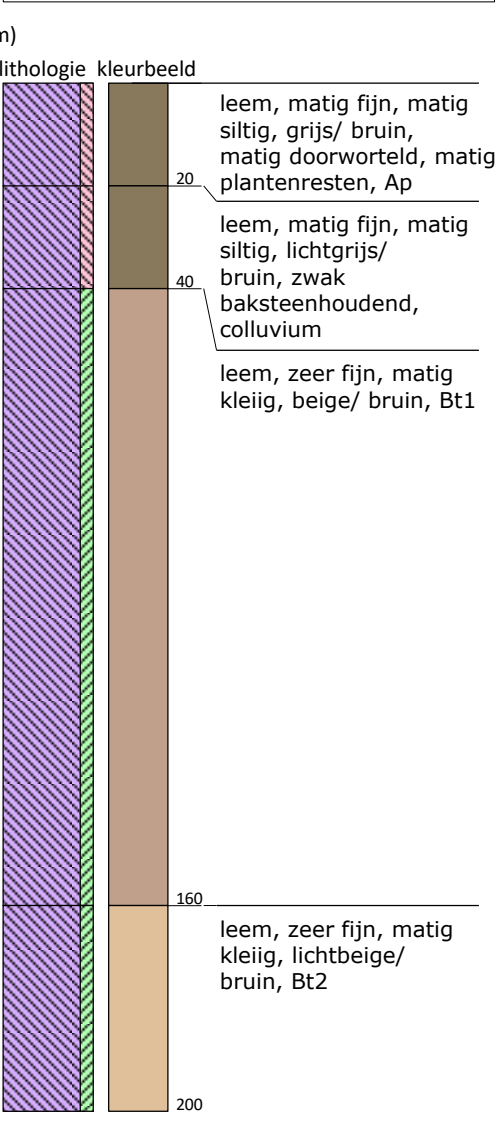
Boring 11 Lb 72-coördinaten: 145649/177822



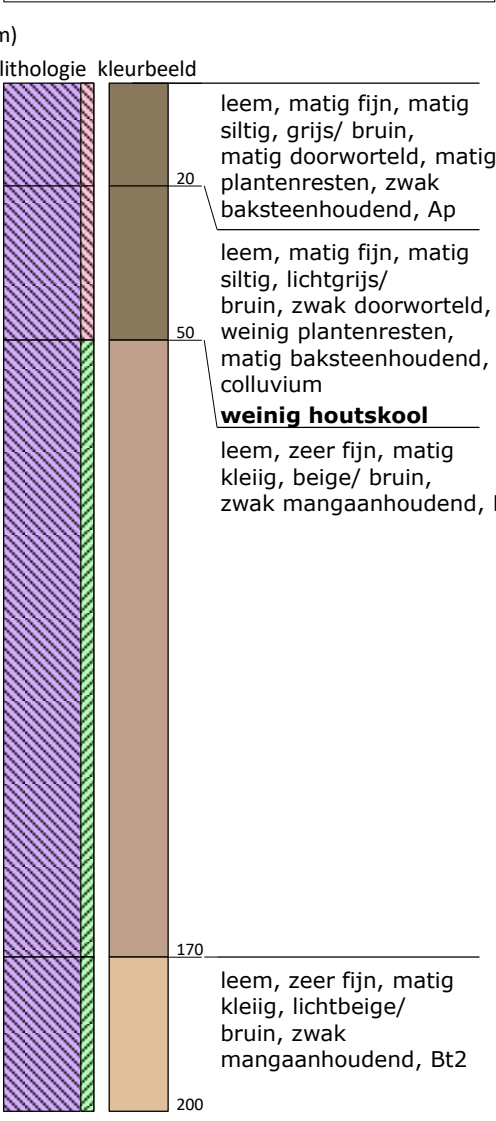
Boring 12 Lb 72-coördinaten: 145678/177862



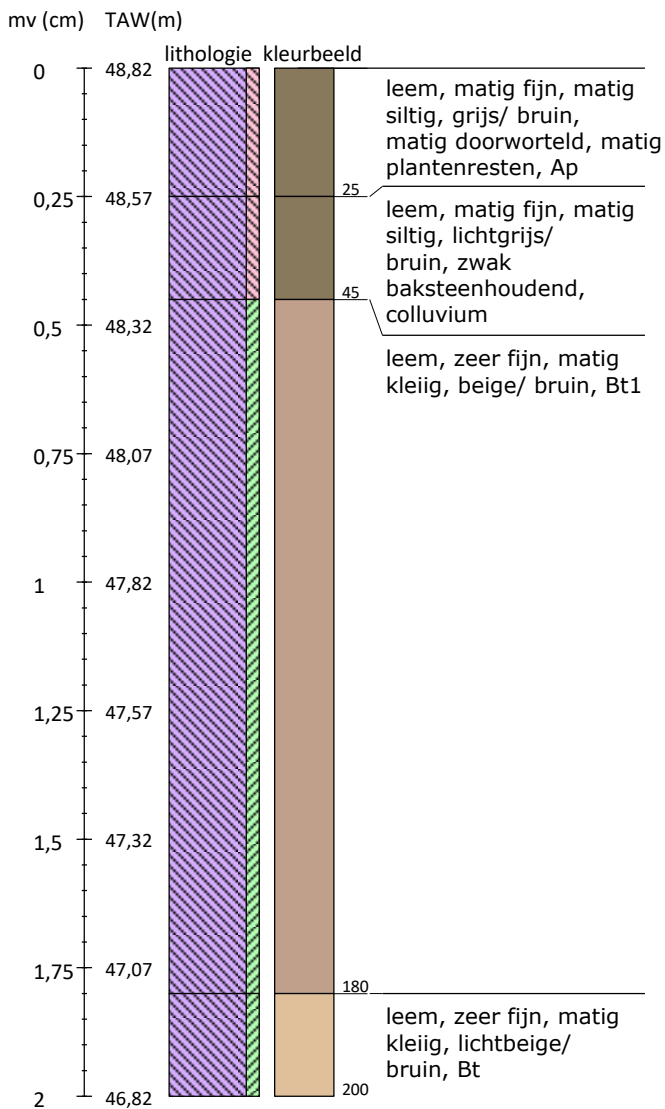
Boring 13	Lb 72-coördinaten: 145678/177902
-----------	----------------------------------



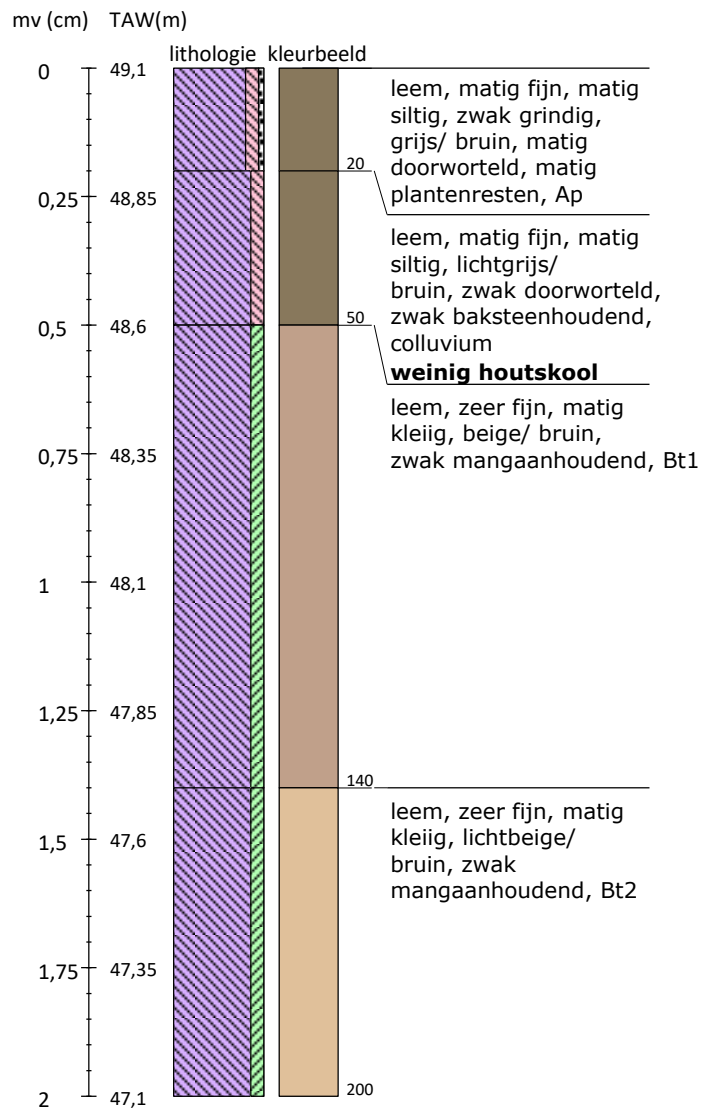
Boring 14 Lb 72-coördinaten: 145709/177861





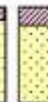


















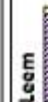












Boring 15 Lb 72-coördinaten: 145709/177901



Boring 16 Lb 72-coördinaten: 145709/177942



Legenda (conform NEN 5104, boorbeschrijvingsnorm van NITG-TNO en ASB)

Zand  Zand, zwak siltig  Zand, matig siltig  Zand, sterk siltig  Zand, uiterst siltig  Zand, kleilig	Veen  Veen, mineraalarm  Veen, zwak kleilig  Veen, sterk kleilig  Veen, zwak zandig  Veen, sterk zandig	Zandmediaan uiterst fijn < 105 µm zeer fijn 105 - < 150 µm matig fijn 150 - < 210 µm matig grof 210 - < 300 µm zeer grof 300 - < 420 µm uiterst grof 420 - < 2000 µm Zandsortering goed gesorteerd D60/D10 < 1,8 matig gesorteerd D60/D10 1,8 < 3 slecht gesorteerd D60/D10 > 3	Boortype Edelmanboor ø 7 cm Edelmanboor ø 10 cm Edelmanboor ø 12 cm Edelmanboor ø 15 cm Guts ø 2 cm Guts ø 3 cm Zuigerboor Riverside boor ø 7 cm Mechanische boor ø 10 cm Mechanische boor ø 12 cm Mechanische boor ø 15 cm Mechanische boor ø 20 cm	Inclusies/archeologische indicatoren (resten van planten, wortels, schelpen, wortels, hout, baksteen, puin, kolengruis, glas, aardewerk, houtskool, vuursteen, bot, fosfaat) weinig < 1% matig 1-10% veel > 10%	Grind  Grind, zwak zandig  Grind, matig zandig  Grind, sterk zandig  Grind, uiterst zandig  Grind, siltig	Klei  Klei, zwak siltig  Klei, matig siltig  Klei, sterk siltig  Klei, uiterst siltig  Klei, zwak zandig  Klei, matig zandig  Klei, sterk zandig	Leem  Leem, zwak zandig  Leem, sterk zandig  verstoord	Overige toevoegingen  zwak humeus  matig humeus  sterk humeus  zwak grindig  matig grindig  sterk grindig	Begrenzing onderliggende laag scherp overgangsgebied < 0,3 cm onscherp overgangsgebied 0,3 - < 3 cm diffuus overgangsgebied 3 cm - < 10 cm	Grondwaterstand GHG  GWG  GLG 	Kalkgehalte kalkloos geen opbruising, minder dan 0,5% CaCO ₃ kalkarm hoorbare opbruising, circa 0,5 - 1 à 2 % CaCO ₃ kalkrijk zichtbare opbruising, 1 à 2% CaCO ₃	@ Boorstaten! - www.boorstaten.nl
--	---	---	---	--	---	--	---	---	--	---	--	-----------------------------------