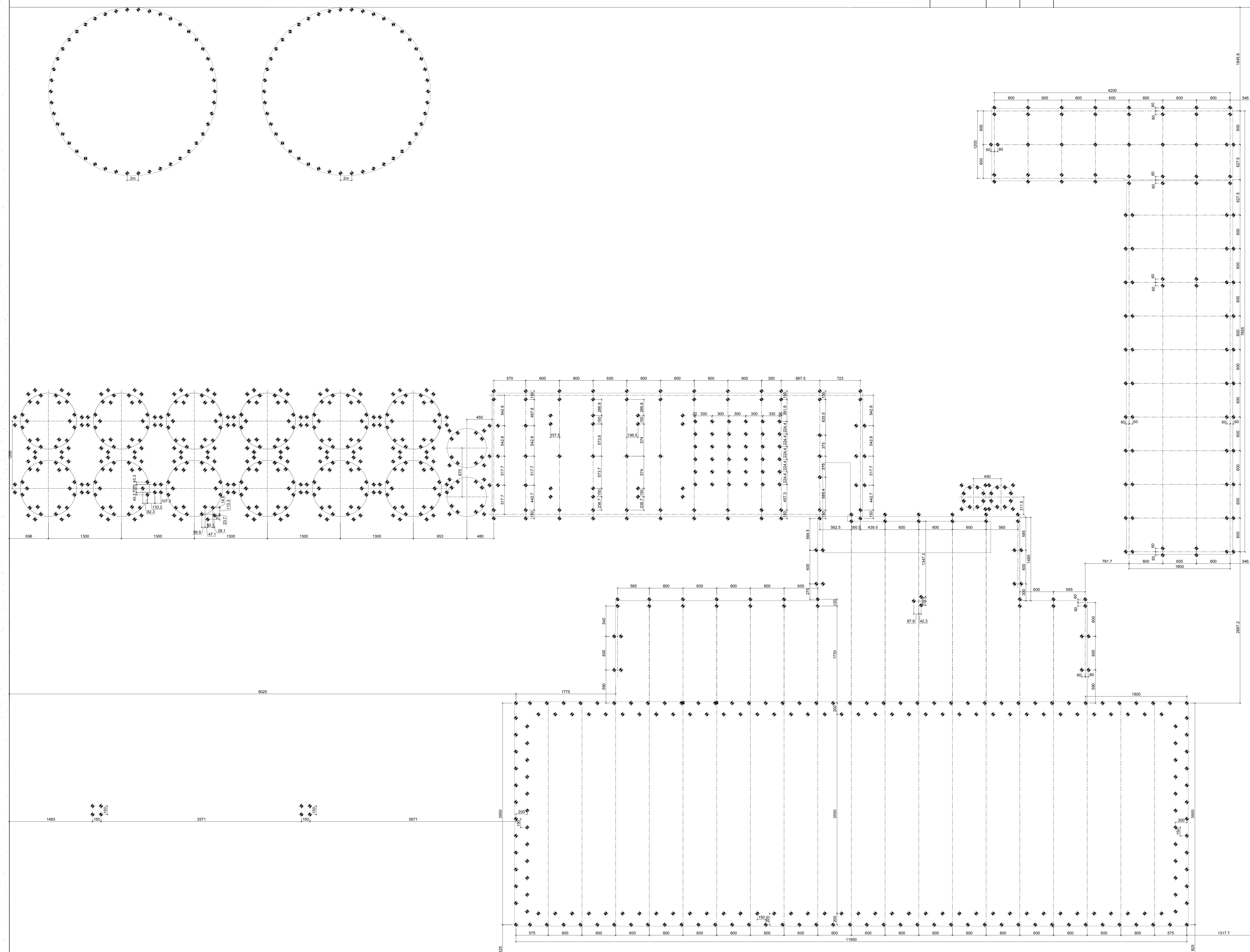
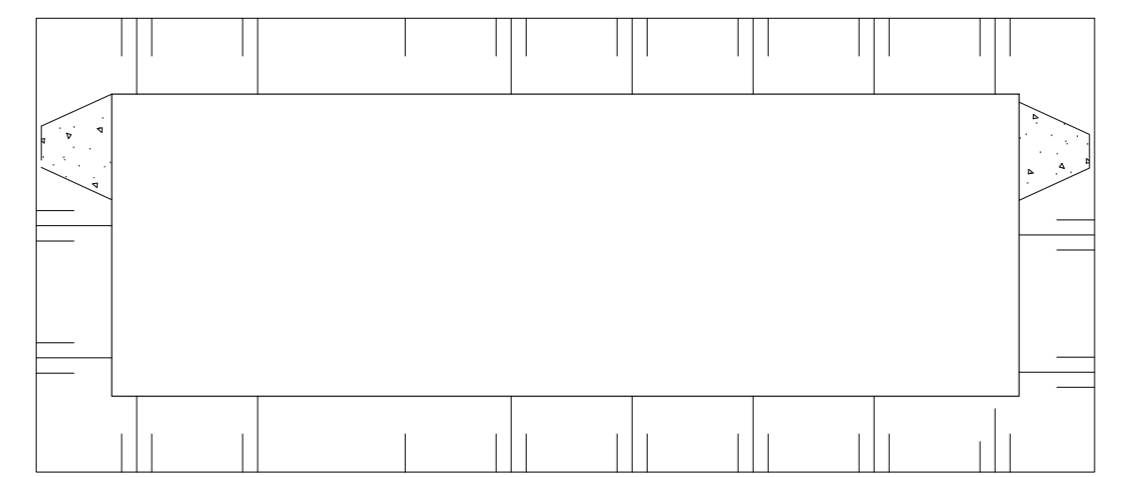


Christoffel Columbuslaan



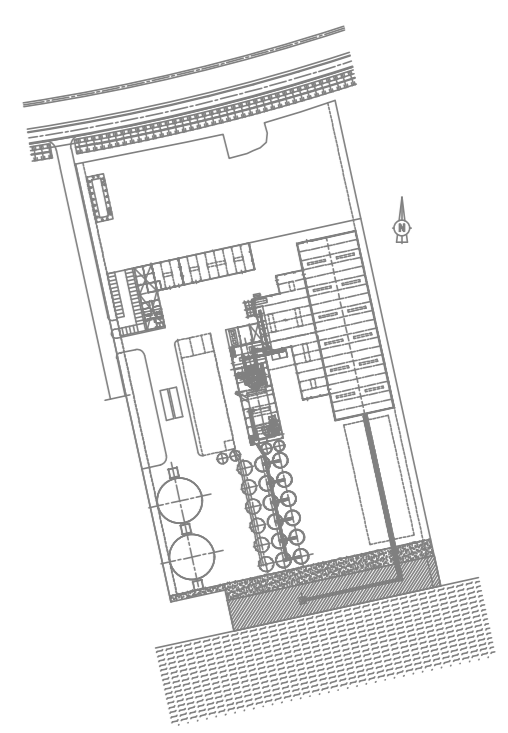
• palen Ø500mm  
 aantal: 983  
 totale oppervlakte palen: 193.01m<sup>2</sup>  
 totale oppervlakte terrein: 55824.78m<sup>2</sup>  
 versterking ongeroerde grond: 0,3457 %




 Heelendestraat 23 9100 LOKEREN  
 TEL: 09/233.24.42  
 e-mail: jsh@rcade-concept.be

Opmettende: **CEMMINERALS BVBA** Vlaanderenstraat 2 8800 ROESELARE  
 Architect: **Axi architecten** Tenbosstelslaan 105 9000 GENT

Project: **CEMMINERALS GENT** 15051  
 Christoffel Columbuslaan



|              | INDEX      | DATUM | WISSENG |
|--------------|------------|-------|---------|
| BOUWAANVRAAG | 22/09/2016 |       |         |
| AANBESTEDING |            |       |         |
| UITVOERING   |            |       |         |
| T/250        | PALENPLAN  |       | 012     |