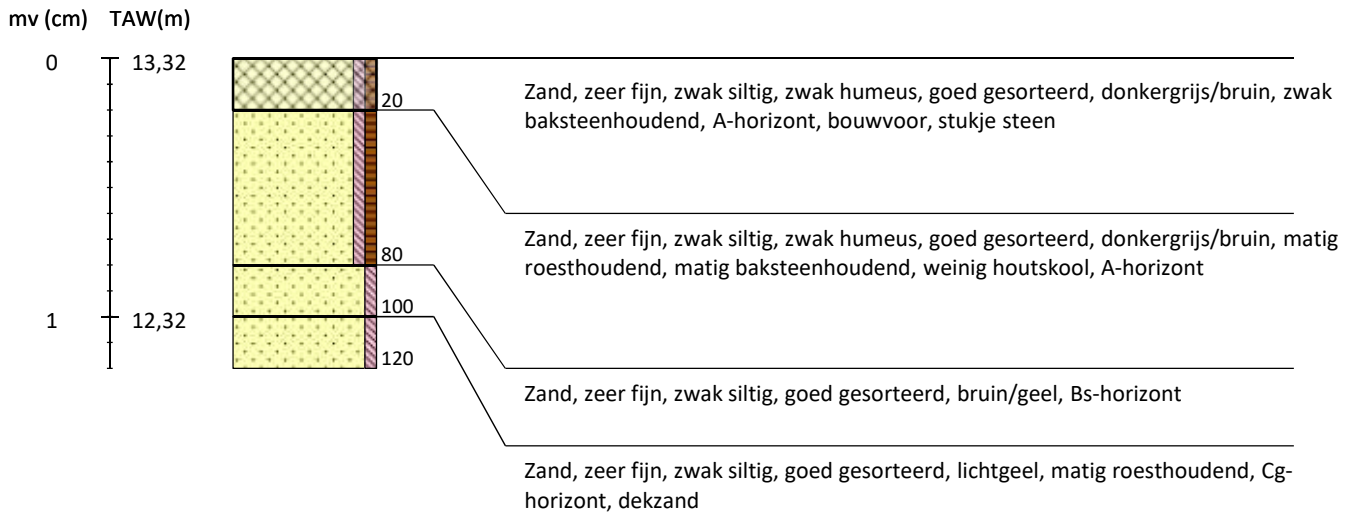


## Vispluk 52 te Vorselaar

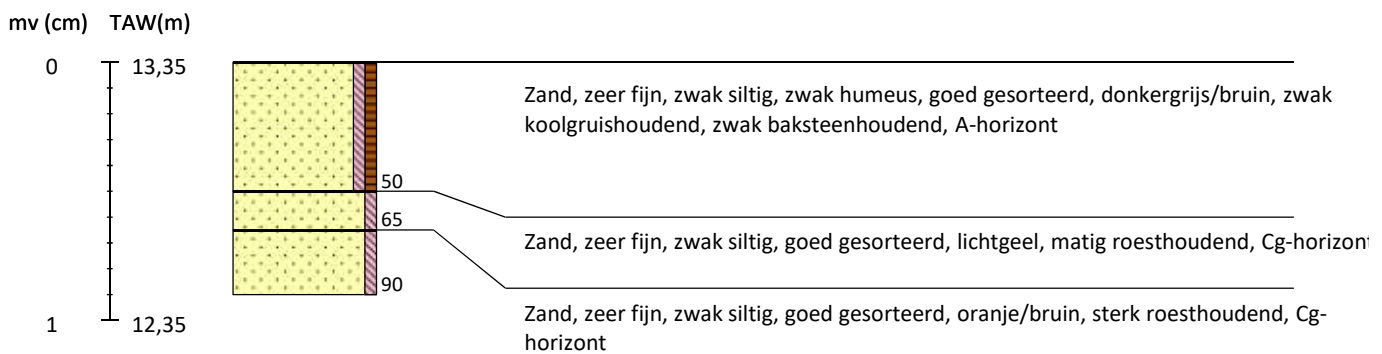
Boring 1 Lb 72-coördinaten: 178963/212190



Boring 2 Lb 72-coördinaten: 178965/212155



Boring 3 Lb 72-coördinaten: 178987/212162

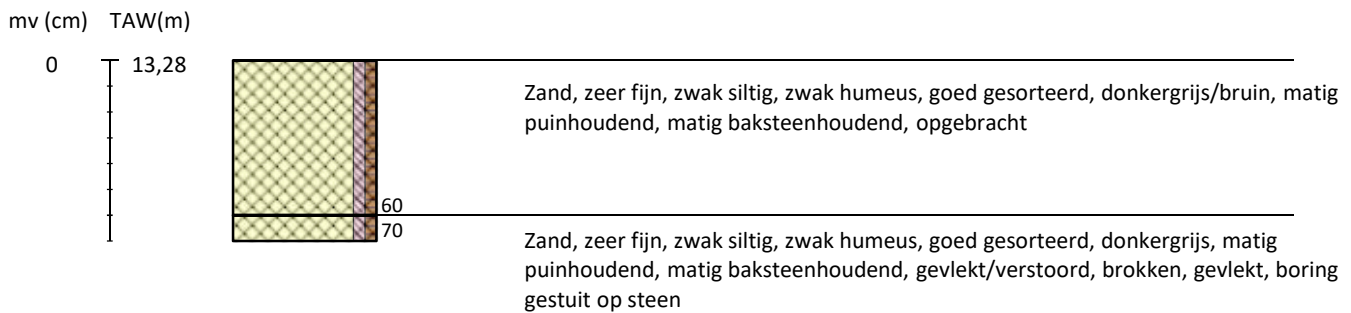


## Vispluk 52 te Vorselaar

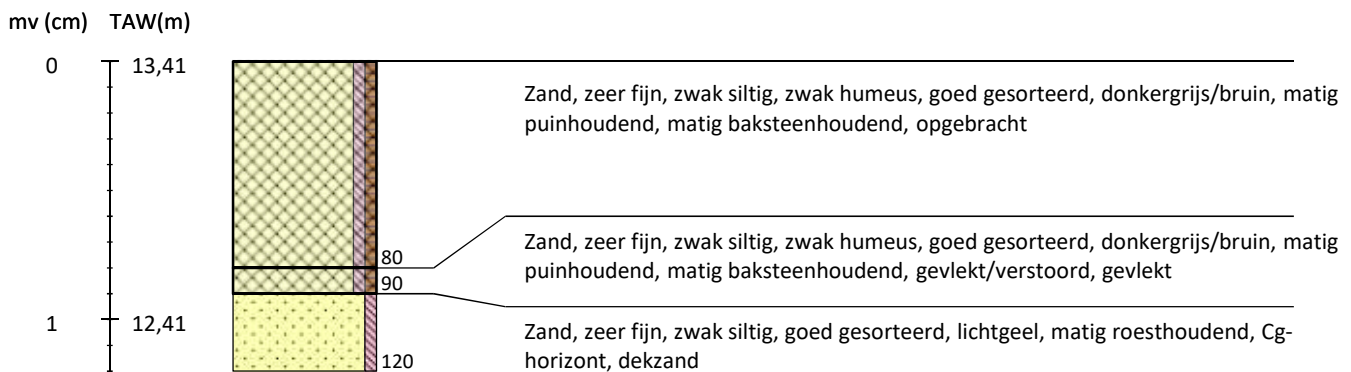
Boring 4 Lb 72-coördinaten: 178983/212197



Boring 5 Lb 72-coördinaten: 179023/212206



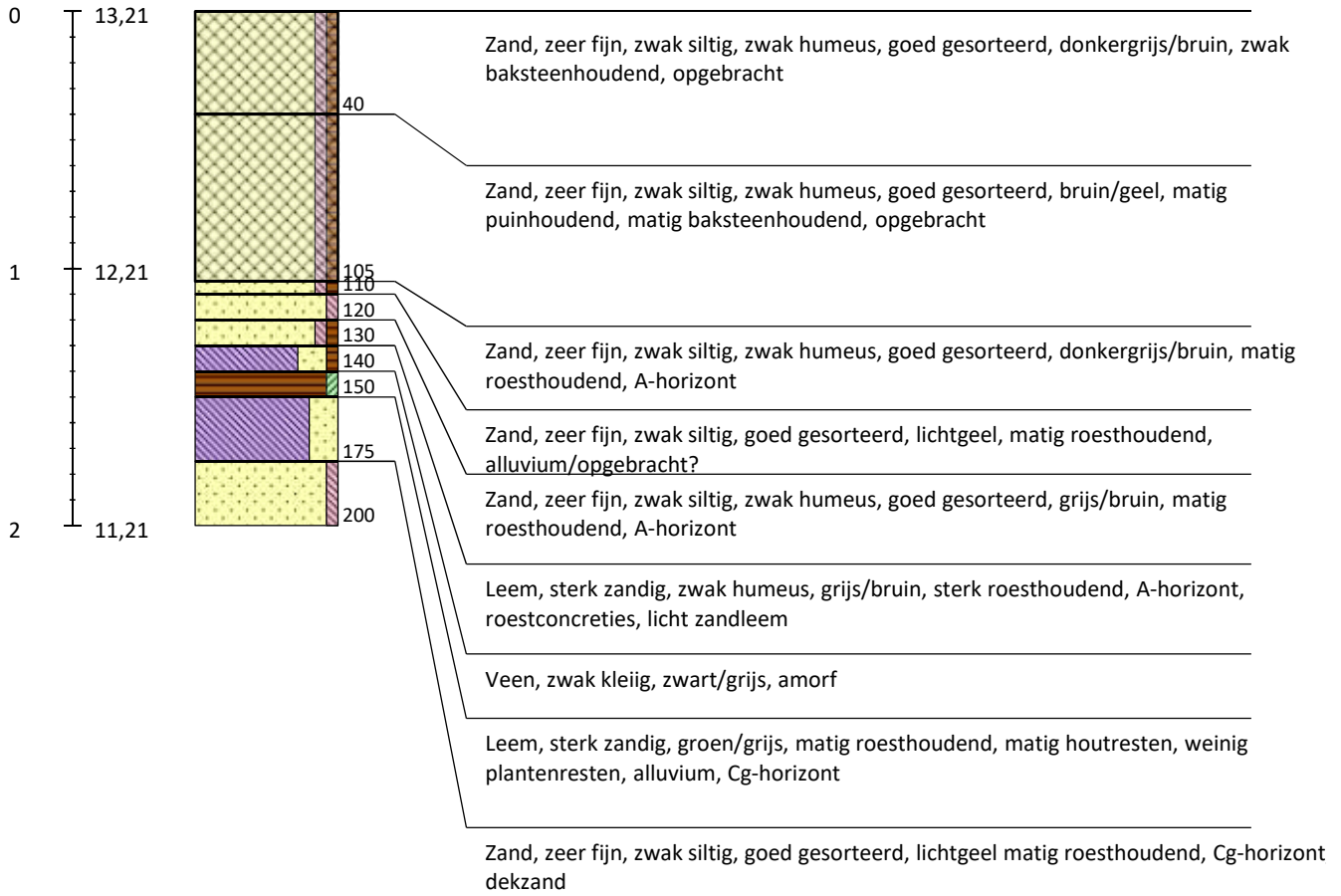
Boring 6 Lb 72-coördinaten: 179007/212185



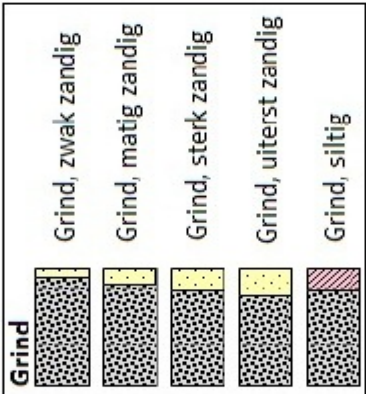
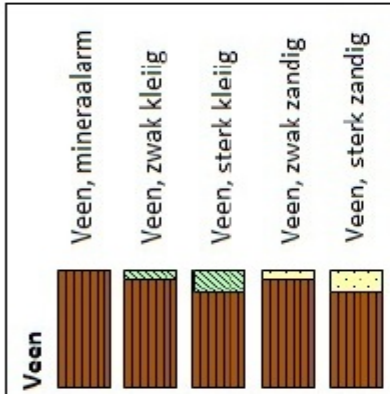
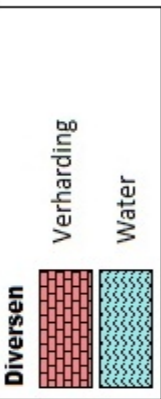
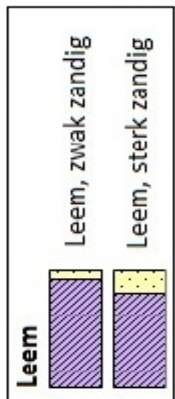
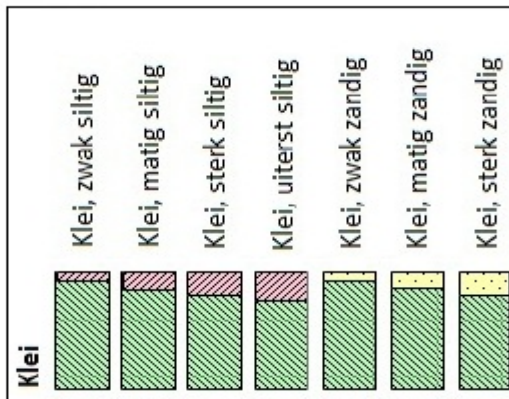
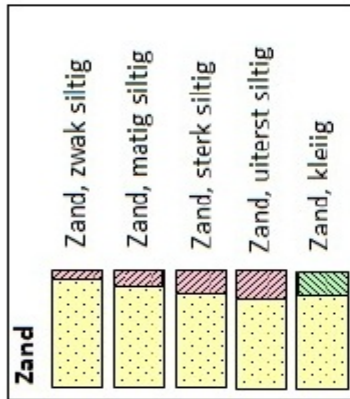
# Vispluk 52 te Vorselaar

Boring 7 Lb 72-coördinaten: 179020/212171

mv (cm) TAW(m)



**Legenda (conform NEN 5104, boorbeschrijvingsnorm van NITG-TNO en ASB)**



**Grondwater**

gemiddeld hoogste grondwaterstand

grondwaterstand

gemiddeld laagste grondwaterstand

**Zandmediaan**

uiterst fijn	< 105	µm
zeer fijn	105 - < 150	µm
matig fijn	150 - < 210	µm
matig grof	210 - < 300	µm
zeer grof	300 - < 420	µm
uiterst grof	420 - < 2000	µm

**Zandsortering**

goed gesorteerd	D60/D10 < 1,8
matig gesorteerd	D60/D10 1,8 < 3
slecht gesorteerd	D60/D10 > 3

**Kalkgehalte**

kalkloos	geen opbruising, minder dan 0,5% CaCO <sub>3</sub>
kalkarm	hoorbare opbruising, circa 0,5 - 1 à 2% CaCO <sub>3</sub>
kalkrijk	zichtbare opbruising, 1 à 2% CaCO <sub>3</sub>

**Begrenzing onderliggende laag**

scherp	overgangsgebied < 0,3 cm
onscherp	overgangsgebied 0,3 - < 3 cm
diffuus	overgangsgebied 3 cm - < 10 cm

**Inclusies/archeologische indicatoren**

weinig	< 1%
matig	1-10%
veel	> 10%