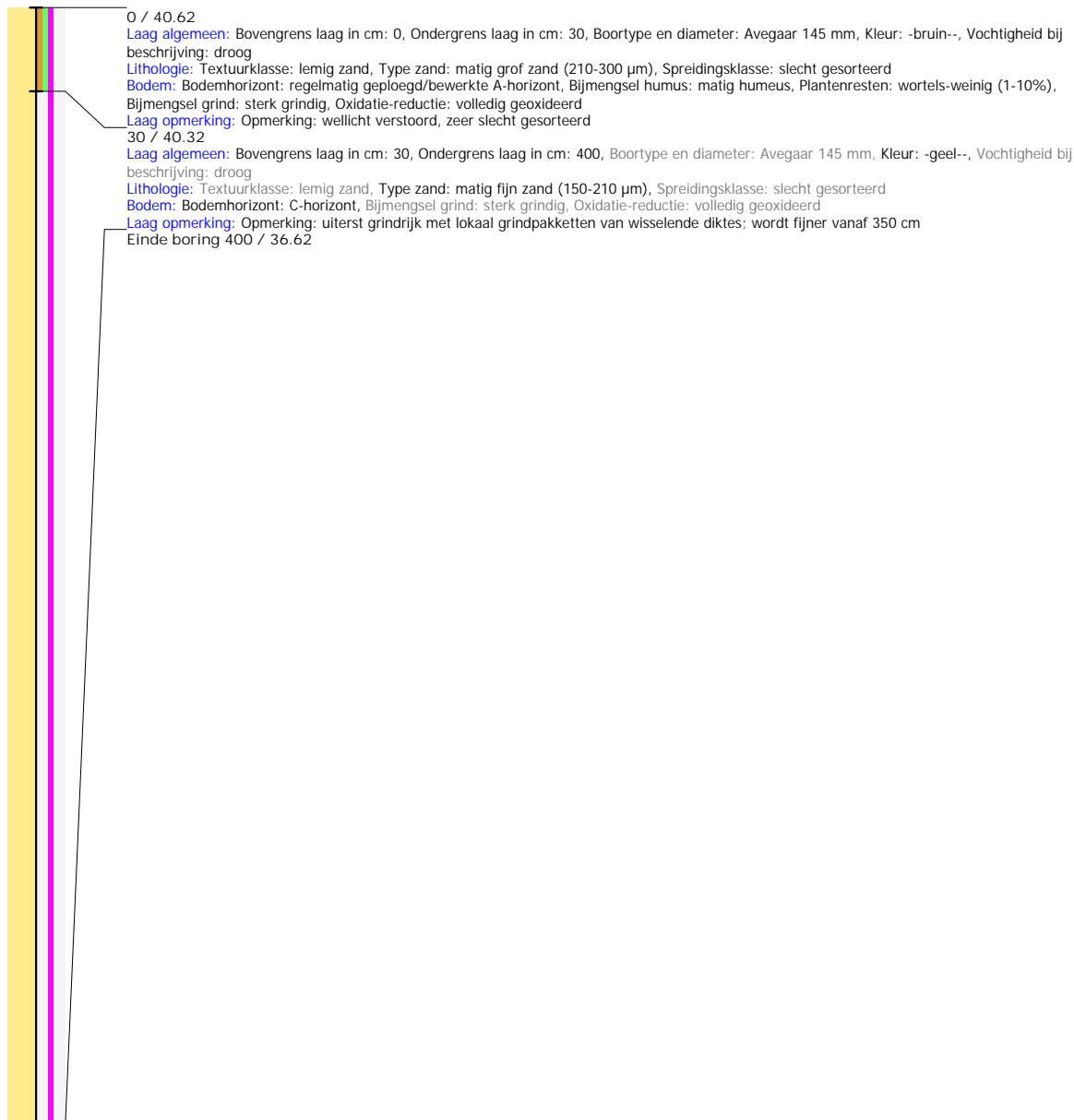


Boring: 2018J336_1

Kop algemeen: Projectcode: 2018J336, Boornummer: 1, Beschrijver(s): PP AC, Datum: 06-12-2018, Doel boring: controle boringen, Weersomstandigheden: bewolkt, Landgebruik: grasland, Boortechniek: mechanische boring, Einddiepte boring in cm: 400

Coördinaten: X-coördinaat in meters: 243480.034, Y-coördinaat in meters: 187477.768, Precisie coördinaat: 1 dm, Coördinaatsysteem / epsg: Lambert 1972 (BE), Hoogte maaiveld in meters: 40.62, Precisie hoogte: 1 cm, Referentievlak hoogte: Tweede Algemene Waterpas, Bepalingsmethode maaiveldhoogte: GPS, Provincie: Limburg (B), Gemeente: Maasmechelen

Plaats: Uitvoerder: BAAC Vlaanderen

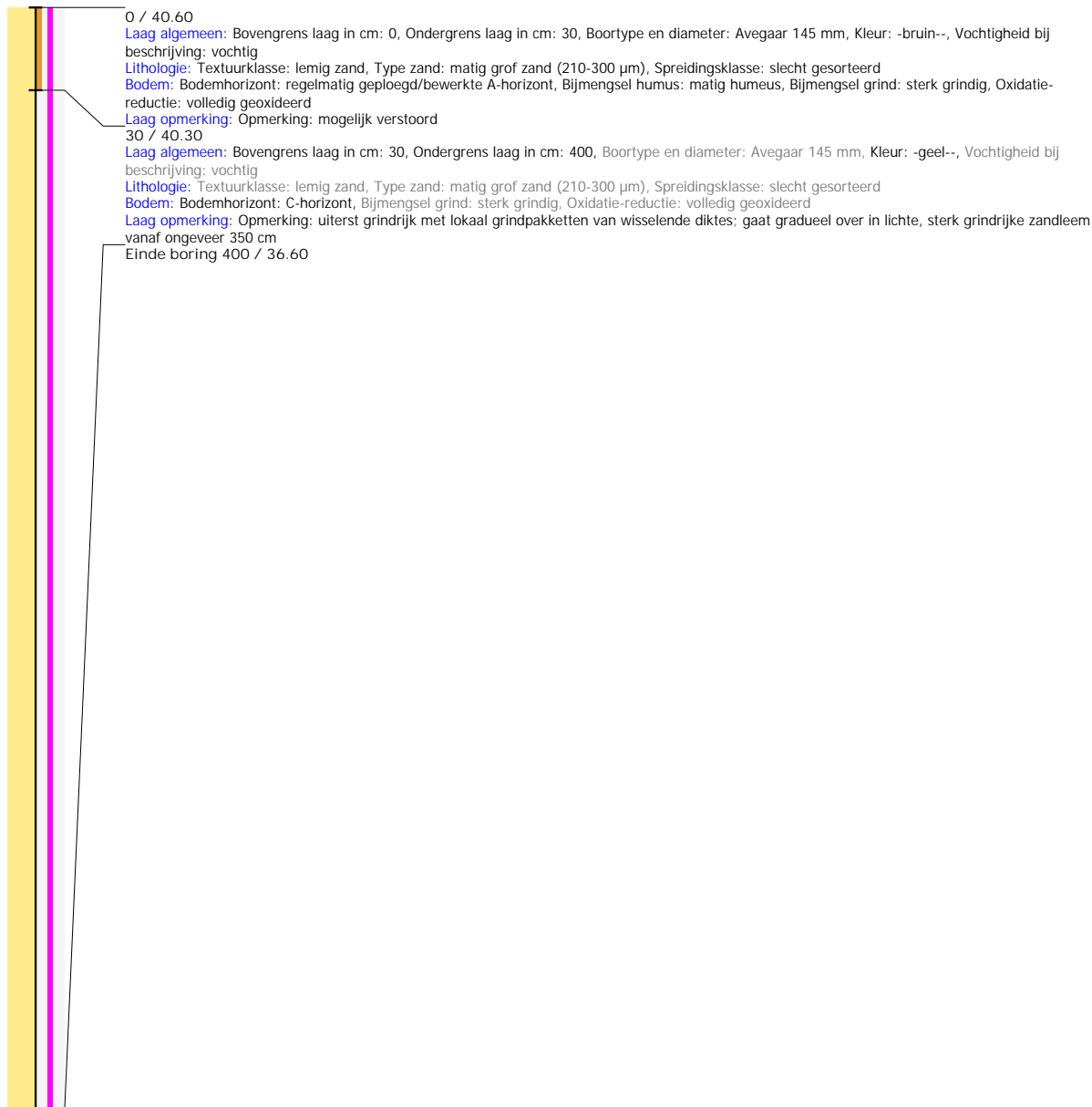


Boring: 2018J336_2

Kop algemeen: Projectcode: 2018J336, Boornummer: 2, Beschrijver(s): PP AC, Datum: 06-12-2018, Doel boring: controle boringen, Weersomstandigheden: bewolkt, Landgebruik: grasland, Boortechniek: mechanische boring, Einddiepte boring in cm: 400

Coördinaten: X-coördinaat in meters: 243500.922, Y-coördinaat in meters: 187466.497, Precisie coördinaat: 1 dm, Coördinaatsysteem / epsg: Lambert 1972 (BE), Hoogte maaiveld in meters: 40.6, Precisie hoogte: 1 cm, Referentievlak hoogte: Tweede Algemene Waterpas, Bepalingsmethode maaiveldhoogte: GPS, Provincie: Limburg (B), Gemeente: Maasmechelen

Plaats: Uitvoerder: BAAC Vlaanderen

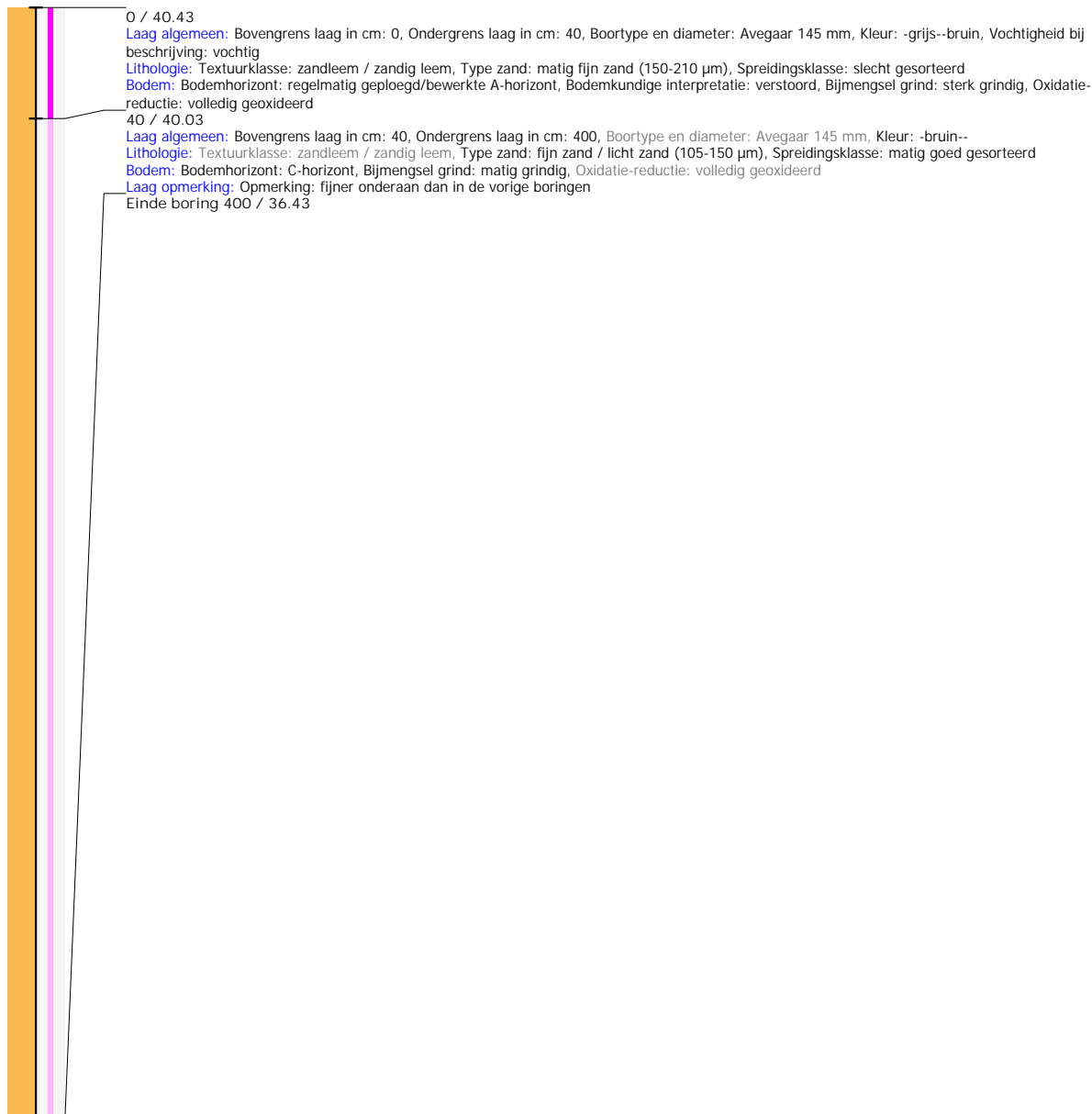


Boring: 2018J336_3

Kop algemeen: Projectcode: 2018J336, Boornummer: 3, Beschrijver(s): PP AC, Datum: 06-12-2018, Doel boring: controle boringen, Weersomstandigheden: bewolkt, Landgebruik: grasland, Boortechniek: mechanische boring, Einddiepte boring in cm: 400

Coördinaten: X-coördinaat in meters: 243507.626, Y-coördinaat in meters: 187483.474, Precisie coördinaat: 1 dm, Coördinaatsysteem / epsg: Lambert 1972 (BE), Hoogte maaiveld in meters: 40.43, Precisie hoogte: 1 cm, Referentievlak hoogte: Tweede Algemene Waterpas, Bepalingsmethode maaiveldhoogte: GPS, Provincie: Limburg (B), Gemeente: Maasmechelen

Plaats: Uitvoerder: BAAC Vlaanderen

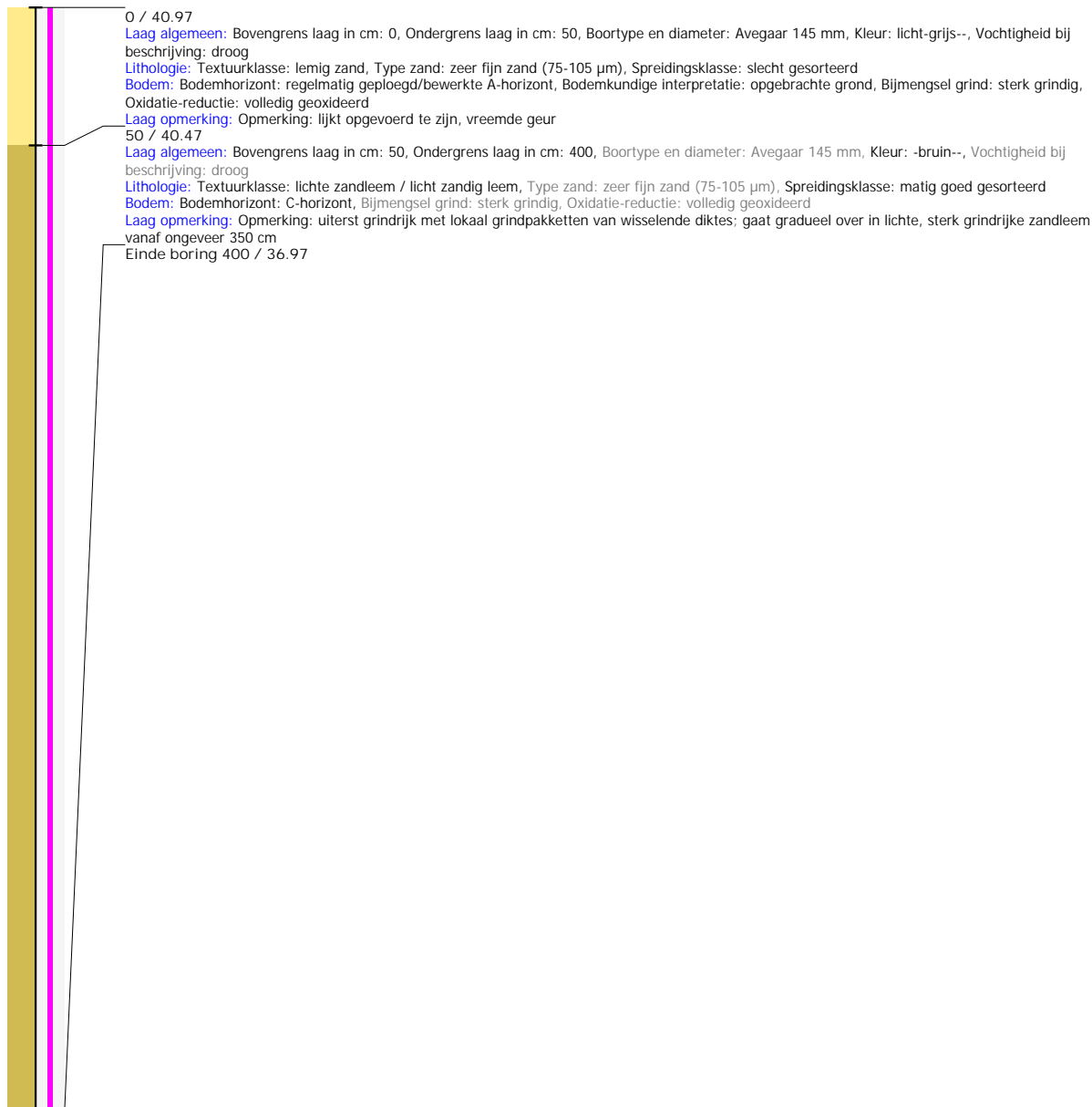


Boring: 2018J336_4

Kop algemeen: Projectcode: 2018J336, Boornummer: 4, Beschrijver(s): PP AC, Datum: 06-12-2018, Doel boring: controle boringen, Weersomstandigheden: bewolkt, Landgebruik: grasland, Boortechniek: mechanische boring, Einddiepte boring in cm: 400

Coördinaten: X-coördinaat in meters: 243529.135, Y-coördinaat in meters: 187482.779, Precisie coördinaat: 1 dm, Coördinaatsysteem / epsg: Lambert 1972 (BE), Hoogte maaiveld in meters: 40.97, Precisie hoogte: 1 cm, Referentievlak hoogte: Tweede Algemene Waterpas, Bepalingsmethode maaiveldhoogte: GPS, Provincie: Limburg (B), Gemeente: Maasmechelen

Plaats: Uitvoerder: BAAC Vlaanderen

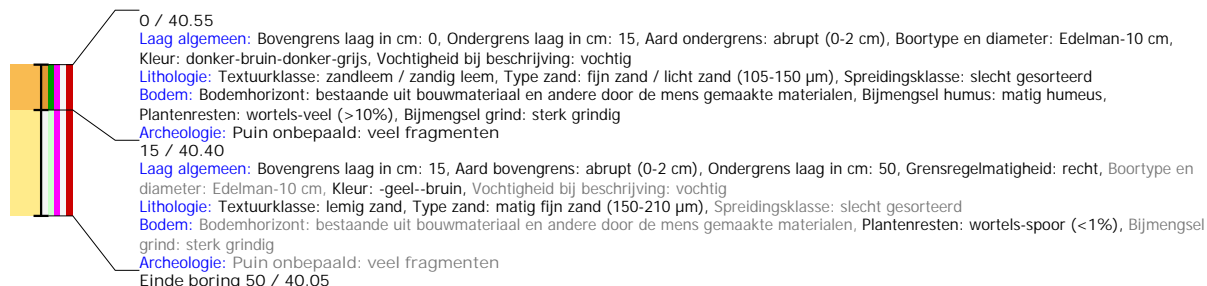


Boring: 2018J336_5

Kop algemeen: Projectcode: 2018J336, Boornummer: 5, Beschrijver(s): PP AC, Datum: 06-12-2018, Doel boring: controle boringen, Weersomstandigheden: bewolkt, Landgebruik: grasland, Boortechniek: handboring, Einddiepte boring in cm: 50

Coördinaten: X-coördinaat in meters: 243565.017, Y-coördinaat in meters: 187453.868, Precisie coördinaat: 1 dm, Coördinaatsysteem / epsg: Lambert 1972 (BE), Hoogte maaiveld in meters: 40.55, Precisie hoogte: 1 cm, Referentievak hoogte: Tweede Algemene Waterpas, Bepalingsmethode maaiveldhoogte: GPS, Provincie: Limburg (B), Gemeente: Maasmechelen

Plaats: Uitvoerder: BAAC Vlaanderen

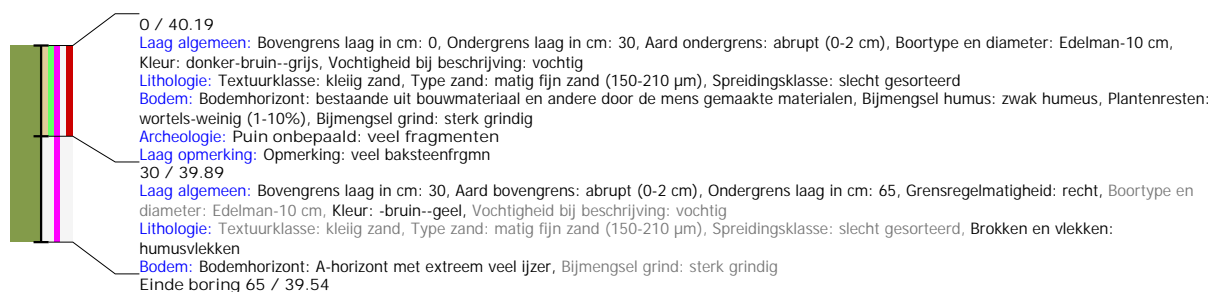


Boring: 2018J336_6

Kop algemeen: Projectcode: 2018J336, Boornummer: 6, Beschrijver(s): PP AC, Datum: 06-12-2018, Doel boring: controle boringen, Weersomstandigheden: bewolkt, Landgebruik: grasland, Boortechniek: handboring, Einddiepte boring in cm: 65

Coördinaten: X-coördinaat in meters: 243554.231, Y-coördinaat in meters: 187471.155, Precisie coördinaat: 1 dm, Coördinaatsysteem / epsg: Lambert 1972 (BE), Hoogte maaiveld in meters: 40.19, Precisie hoogte: 1 cm, Referentievak hoogte: Tweede Algemene Waterpas, Bepalingsmethode maaiveldhoogte: GPS, Provincie: Limburg (B), Gemeente: Maasmechelen

Plaats: Uitvoerder: BAAC Vlaanderen

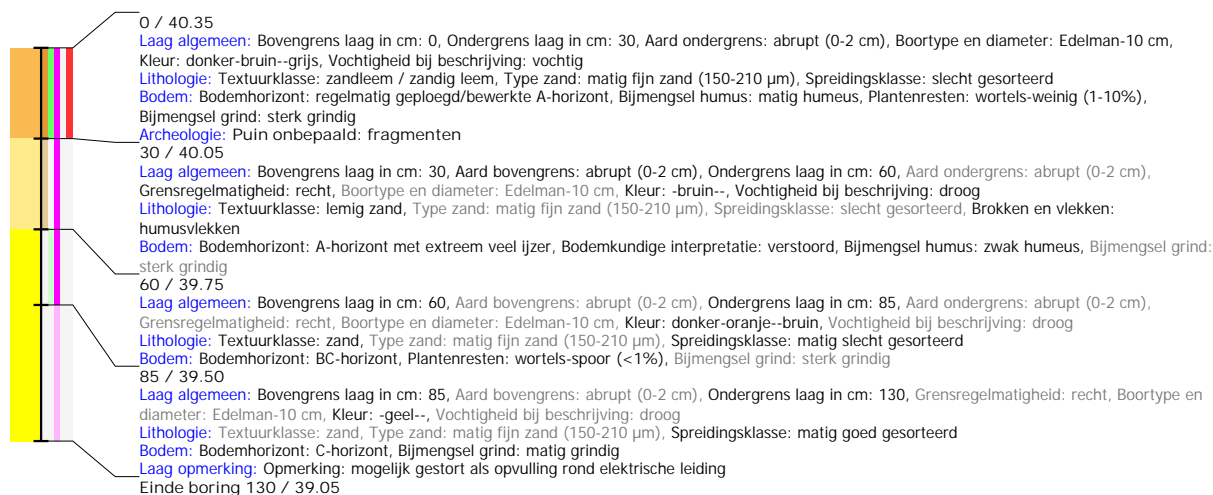


Boring: 2018J336_7

Kop algemeen: Projectcode: 2018J336, Boornummer: 7, Beschrijver(s): PP AC, Datum: 06-12-2018, Doel boring: controle boringen, Weersomstandigheden: bewolkt, Landgebruik: grasland, Boortechniek: handboring, Einddiepte boring in cm: 130

Coördinaten: X-coördinaat in meters: 243567.005, Y-coördinaat in meters: 187491.329, Precisie coördinaat: 1 dm, Coördinaatsysteem / epsg: Lambert 1972 (BE), Hoogte maaiveld in meters: 40.35, Precisie hoogte: 1 cm, Referentievak hoogte: Tweede Algemene Waterpas, Bepalingsmethode maaiveldhoogte: GPS, Provincie: Limburg (B), Gemeente: Maasmechelen

Plaats: Uitvoerder: BAAC Vlaanderen

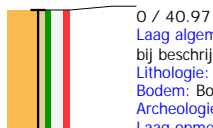


Boring: 2018J336_8

Kop algemeen: Projectcode: 2018J336, Boornummer: 8, Beschrijver(s): PP AC, Datum: 06-12-2018, Doel boring: controle boringen, Weersomstandigheden: bewolkt, Landgebruik: grasland, Boortechniek: handboring, Einddiepte boring in cm: 40

Coördinaten: X-coördinaat in meters: 243524.338, Y-coördinaat in meters: 187456.079, Precisie coördinaat: 1 dm, Coördinaatsysteem / epsg: Lambert 1972 (BE), Hoogte maaiveld in meters: 40.97, Precisie hoogte: 1 cm, Referentievlak hoogte: Tweede Algemene Waterpas, Bepalingsmethode maaiveldhoogte: GPS, Provincie: Limburg (B), Gemeente: Maasmechelen

Plaats: Uitvoerder: BAAC Vlaanderen



0 / 40.97

Laag algemeen: Bovengrens laag in cm: 0, Ondergrens laag in cm: 40, Boortype en diameter: Edelman-10 cm, Kleur: donker-bruin--grijs, Vochtigheid bij beschrijving: vochtig

Lithologie: Textuurklasse: zandleem / zandig leem, Type zand: zeer fijn zand (75-105 µm), Spreidingsklasse: goed gesorteerd

Bodem: Bodemhorizont: regelmatig geploegd/bewerkte A-horizont, Bijmengsel humus: zwak humeus, Plantenresten: wortels-veel (>10%)

Archeologie: Puin onbepaald: fragmenten

Laag opmerking: Opmerking: gestuit op verharding, beton?

Einde boring 40 / 40.57

Boring 2018J336_1

Kopgegevens 2018J336_1

| KPC | KBN | KBS | KDT | KDB | KWO | KLK | KBT | KED | KGW | KXC | KYC | KPL | KCS | KMV | KPZ | KRV | KBM | KPV | KGM | KUV | KOM |
|----------|-----|-----|-----|------------|-----|-----|-----|-----|-----|------------|------------|-----|-------|-------|-----|-----|------|-----|--------------|-----------------|-----|
| 2018J336 | 1 | PP | AC | 06-12-2018 | CB | B | GR | M | 400 | 243480.034 | 187477.768 | 4 | 31370 | 40.62 | 4 | TAW | MDGP | BLI | Maasmechelen | BAAC Vlaanderen | |

Laaggegevens 2018J336_1

| GBG | GAB | GOG | GAO | GRM | GBT | GKL | GKM | GVO | LTK | LZT | LZS | BBB | LSL1 | LSL2 | LVS | LLI | BBH | BBI | LTB | LGK | LGB | LBH | LPR | LBG | LSR | LCA | BFM | BOR | BBR | BBV | AHK | ARL | AAW | AOB | AVB | AVS | APA | APO | AFO | AOV1 | AOV2 | AOV3 | AAI | LOM |
|-----|-----|-----|-----|-----|-----|-----|-----|-----|-----|-----|-----|-----|------|------|-----|-----|-----|-----|-----|-----|-----|-----|-----|-----|-----|-----|-----|-----|-----|-----|-----|-----|-----|-----|-----|-----|-----|-----|-----|------|------|------|-----|----------------------------------------------------------------------------------------------------------------|
| 0 | | 30 | | | A15 | BR | | D | S | Z5 | SZG | | | | | | Ap | | | | | h2 | WO2 | g3 | | | | O | | | | | | | | | | | | | | | | wellicht verstoord, zeer slecht gesorteerd |
| 30 | | 400 | | | A15 | GE | | D | S | Z4 | SZG | | | | | | C | | | | | | | g3 | | | | O | | | | | | | | | | | | | | | | uiterst grindrijk met lokaal grindpakketten van wisselende diktes; wordt fijner vanaf 350 cm |

Boring 2018J336_2

Kopgegevens 2018J336_2

| KPC | KBN | KBS | KDT | KDB | KWO | KLK | KBT | KED | KGW | KXC | KYC | KPL | KCS | KMV | KPZ | KRV | KBM | KPV | KGM | KUV | KOM |
|----------|-----|-----|-----|------------|-----|-----|-----|-----|-----|-----|------------|------------|-----|-------|------|-----|-----|------|-----|--------------|-----------------|
| 2018J336 | 2 | PP | AC | 06-12-2018 | CB | B | GR | M | 400 | | 243500.922 | 187466.497 | 4 | 31370 | 40.6 | 4 | TAW | MDGP | BLI | Maasmechelen | BAAC Vlaanderen |

Laaggegevens 2018J336_2

| GBG | GAB | GOG | GAO | GRM | GBT | GKL | GKM | GVO | LTK | LZT | LZS | BBB | LSL1 | LSL2 | LVS | LLI | BBH | BBI | LTB | LGK | LGB | LBH | LPR | LBG | LSR | LCA | BFM | BOR | BBR | BBV | AHK | ARL | AAW | AOB | AVB | AVS | APA | APO | AFO | AOV1 | AOV2 | AOV3 | AAI | LOM | |
|-----|-----|-----|-----|-----|-----|-----|-----|-----|-----|-----|-----|-----|------|------|-----|-----|-----|-----|-----|-----|-----|-----|-----|-----|-----|-----|-----|-----|-----|-----|-----|-----|-----|-----|-----|-----|-----|-----|-----|------|------|------|-----|--------------------|--------------------------------------------------------------------------------------------------------------------------------------------------|
| 0 | | 30 | | | A15 | BR | | V | S | Z5 | SZG | | | | | | Ap | | | | | h2 | | g3 | | | | O | | | | | | | | | | | | | | | | mogelijk verstoord | |
| 30 | | 400 | | | A15 | GE | | V | S | Z5 | SZG | | | | | | C | | | | | | | g3 | | | | O | | | | | | | | | | | | | | | | | uiterst grindrijk met lokaal grindpakketten van wisselende diktes; gaat gradueel over in lichte, sterk grindrijke zandleem vanaf ongeveer 350 cm |

Boring 2018J336_3

Kopgegevens 2018J336_3

| KPC | KBN | KBS | KDT | KDB | KWO | KLK | KBT | KED | KGW | KXC | KYC | KPL | KCS | KMV | KPZ | KRV | KBM | KPV | KGM | KUV | KOM |
|----------|-----|-----|-----|------------|-----|-----|-----|-----|-----|-----|------------|------------|-----|-------|-------|-----|-----|------|-----|--------------|-----------------|
| 2018J336 | 3 | PP | AC | 06-12-2018 | CB | B | GR | M | 400 | | 243507.626 | 187483.474 | 4 | 31370 | 40.43 | 4 | TAW | MDGP | BLI | Maasmechelen | BAAC Vlaanderen |

Laaggegevens 2018J336_3

| GBG | GAB | GOG | GAO | GRM | GBT | GKL | GKM | GVO | LTk | LZT | LZS | BBB | LSL1 | LSL2 | LVS | LLI | BBH | BBi | LTB | LGK | LGB | LBH | LPR | LBG | LSR | LCA | BFM | BOR | BBR | BBV | AHK | ARL | AAW | AOB | AVB | AVS | APA | APO | AFO | AOV1 | AOV2 | AOV3 | AAI | LOM | |
|-----|-----|-----|-----|-----|-----|------|-----|-----|-----|-----|-----|-----|------|------|-----|-----|-----|-----|-----|-----|-----|-----|-----|-----|-----|-----|-----|-----|-----|-----|-----|-----|-----|-----|-----|-----|-----|-----|-----|------|------|------|-----|-----|----------------------------------------------------|
| 0 | | 40 | | | A15 | GRBR | | V | L | Z4 | SZG | | | | | | Ap | XX | | | | | | g3 | | | | O | | | | | | | | | | | | | | | | | |
| 40 | | 400 | | | A15 | BR | | | L | Z3 | SMK | | | | | | C | | | | | | | g2 | | | | O | | | | | | | | | | | | | | | | | fijner onderaan dan in de vorige boringen |

Boring 2018J336_4

Kopgegevens 2018J336_4

| KPC | KBN | KBS | KDT | KDB | KWO | KLK | KBT | KED | KGW | KXC | KYC | KPL | KCS | KMV | KPZ | KRV | KBM | KPV | KGM | KUV | KOM |
|----------|-----|-----|-----|------------|-----|-----|-----|-----|-----|-----|------------|------------|-----|-------|-------|-----|-----|------|-----|--------------|-----------------|
| 2018J336 | 4 | PP | AC | 06-12-2018 | CB | B | GR | M | 400 | | 243529.135 | 187482.779 | 4 | 31370 | 40.97 | 4 | TAW | MDGP | BLI | Maasmechelen | BAAC Vlaanderen |

Laaggegevens 2018J336_4

| GBG | GAB | GOG | GAO | GRM | GBT | GKL | GKM | GVO | LTK | LZT | LZS | BBB | LSL1 | LSL2 | LVS | LLI | BBH | BBI | LTB | LGK | LGB | LBH | LPR | LBG | LSR | LCA | BFM | BOR | BBR | BBV | AHK | ARL | AAW | AOB | AVB | AVS | APA | APO | AFO | AOV1 | AOV2 | AOV3 | AAI | LOM | | |
|-----|-----|-----|-----|-----|-----|-----|-----|-----|-----|-----|-----|-----|------|------|-----|-----|-----|-----|-----|-----|-----|-----|-----|-----|-----|-----|-----|-----|-----|-----|-----|-----|-----|-----|-----|-----|-----|-----|-----|------|------|------|-----|-----|---------------------------------------|--------------------------------------------------------------------------------------------------------------------------------------------------|
| 0 | | 50 | | | A15 | LGR | | D | S | Z2 | SZG | | | | | | Ap | OP | | | | | | g3 | | | | | O | | | | | | | | | | | | | | | | lijkt opgevoerd te zijn, vreemde geur | |
| 50 | | 400 | | | A15 | BR | | D | P | Z2 | SMK | | | | | | C | | | | | | | g3 | | | | | O | | | | | | | | | | | | | | | | | uiterst grindrijk met lokaal grindpakketten van wisselende diktes; gaat gradueel over in lichte, sterk grindrijke zandleem vanaf ongeveer 350 cm |

Boring 2018J336_5

Kopgegevens 2018J336_5

| KPC | KBN | KBS | KDT | KDB | KWO | KLK | KBT | KED | KGW | KXC | KYC | KPL | KCS | KMV | KPZ | KRV | KBM | KPV | KGM | KUV | KOM |
|----------|-----|-----|-----|------------|-----|-----|-----|-----|-----|------------|------------|-----|-------|-------|-----|-----|------|-----|--------------|-----------------|-----|
| 2018J336 | 5 | PP | AC | 06-12-2018 | CB | B | GR | H | 50 | 243565.017 | 187453.868 | 4 | 31370 | 40.55 | 4 | TAW | MDGP | BLI | Maasmechelen | BAAC Vlaanderen | |

Laaggegevens 2018J336_5

| GBG | GAB | GOG | GAO | GRM | GBT | GKL | GKM | GVO | LTK | LZT | LZS | BBB | LSL1 | LSL2 | LVS | LLI | BBH | BBI | LTB | LGK | LGB | LBH | LPR | LBG | LSR | LCA | BFM | BOR | BBR | BBV | AHK | ARL | AAW | AOB | AVB | AVS | APA | APO | AFO | AOV1 | AOV2 | AOV3 | AAI | LOM |
|-----|-----|-----|-----|-----|-----|--------|-----|-----|-----|-----|-----|-----|------|------|-----|-----|-----|-----|-----|-----|-----|-----|-----|-----|-----|-----|-----|-----|-----|-----|-----|-----|-----|-----|-----|-----|-----|-----|-----|------|------|------|-----|-----|
| 0 | | 15 | SA | | E10 | DBRDGR | | V | L | Z3 | SZG | | | | | | Au | | | | | h2 | WO3 | g3 | | | | | | | | | | | | 3 | | | | | | | | |
| 15 | SA | 50 | | R | E10 | GEBR | | V | S | Z4 | SZG | | | | | | Au | | | | | | WO1 | g3 | | | | | | | | | | | | 3 | | | | | | | | |

Boring 2018J336_6

Kopgegevens 2018J336_6

| KPC | KBN | KBS | KDT | KDB | KWO | KL | KBT | KED | KGW | KXC | KYC | KPL | KCS | KMV | KPZ | KRV | KBM | KPV | KGM | KUV | KOM |
|----------|-----|-------|------------|-----|-----|----|-----|-----|-----|------------|------------|-----|-------|-------|-----|-----|------|-----|--------------|-----------------|-----|
| 2018J336 | 6 | PP AC | 06-12-2018 | CB | B | GR | H | 65 | | 243554.231 | 187471.155 | 4 | 31370 | 40.19 | 4 | TAW | MDGP | BLI | Maasmechelen | BAAC Vlaanderen | |

Laaggegevens 2018J336_6

[illegible]

Boring 2018J336_7

Kopgegevens 2018J336_7

| KPC | KBN | KBS | KDT | KDB | KWO | KLK | KBT | KED | KGW | KXC | KYC | KPL | KCS | KMV | KPZ | KRV | KBM | KPV | KGM | KUV | KOM |
|----------|-----|-----|-----|------------|-----|-----|-----|-----|-----|-----|------------|------------|-----|-------|-------|-----|-----|------|-----|--------------|-----------------|
| 2018J336 | 7 | PP | AC | 06-12-2018 | CB | B | GR | H | 130 | | 243567.005 | 187491.329 | 4 | 31370 | 40.35 | 4 | TAW | MDGP | BLI | Maasmechelen | BAAC Vlaanderen |

Laaggegevens 2018J336_7

| GBG | GAB | GOG | GAO | GRM | GBT | GKL | GKM | GVO | LTK | LZT | LZS | BBB | LSL1 | LSL2 | LVS | LLI | BBH | BBI | LTB | LGK | LGB | LBH | LPR | LBG | LSR | LCA | BFM | BOR | BBR | BBV | AHK | ARL | AAW | AOB | AVB | AVS | APA | APO | AFO | AOV1 | AOV2 | AOV3 | AAI | LOM | |
|-----|-----|-----|-----|-----|-----|-------|-----|-----|-----|-----|-----|-----|------|------|-----|-----|-----|-----|-----|-----|-----|-----|-----|-----|-----|-----|-----|-----|-----|-----|-----|-----|-----|-----|-----|-----|-----|-----|-----|------|------|------|-----|-----|---------------------------------------------------------|
| 0 | | 30 | SA | | E10 | DBRGR | | V | L | Z4 | SZG | | | | | | Ap | | | | | h2 | WO2 | g3 | | | | | | | | | | | | | 2 | | | | | | | | |
| 30 | SA | 60 | SA | R | E10 | BR | | D | S | Z4 | SZG | HV | | | | | AC | XX | | | | h1 | | g3 | | | | | | | | | | | | | | | | | | | | | |
| 60 | SA | 85 | SA | R | E10 | DORBR | | D | Z | Z4 | SMG | | | | | | BC | | | | | | WO1 | g3 | | | | | | | | | | | | | | | | | | | | | |
| 85 | SA | 130 | | R | E10 | GE | | D | Z | Z4 | SMK | | | | | | C | | | | | | | g2 | | | | | | | | | | | | | | | | | | | | | mogelijk gestort als opvulling rond elektrische leiding |

Boring 2018J336_8

Kopgegevens 2018J336_8

| KPC | KBN | KBS | KDT | KDB | KWO | KLK | KBT | KED | KGW | KXC | KYC | KPL | KCS | KMV | KPZ | KRV | KBM | KPV | KGM | KUV | KOM |
|----------|-----|-----|-----|------------|-----|-----|-----|-----|-----|-----|------------|------------|-----|-------|-------|-----|-----|------|-----|--------------|-----------------|
| 2018J336 | 8 | PP | AC | 06-12-2018 | CB | B | GR | H | 40 | | 243524.338 | 187456.079 | 4 | 31370 | 40.97 | 4 | TAW | MDGP | BLI | Maasmechelen | BAAC Vlaanderen |

Laaggegevens 2018J336_8

| GBG | GAB | GOG | GAO | GRM | GBT | GKL | GKM | GVO | LTK | LZT | LZS | BBB | LSL1 | LSL2 | LVS | LLI | BBH | BBI | LTB | LGK | LGB | LBH | LPR | LBG | LSR | LCA | BFM | BOR | BBR | BBV | AHK | ARL | AAW | AOB | AVB | AVS | APA | APO | AFO | AOV1 | AOV2 | AOV3 | AAI | LOM |
|-----|-----|-----|-----|-----|-----|-------|-----|-----|-----|-----|-----|-----|------|------|-----|-----|-----|-----|-----|-----|-----|-----|-----|-----|-----|-----|-----|-----|-----|-----|-----|-----|-----|-----|-----|-----|-----|-----|-----|------|------|------|-----|-------------------------------|
| 0 | | 40 | | | E10 | DBRGR | | V | L | Z2 | SZK | | | | | Ap | | | | | | h1 | WO3 | | | | | | | | | | | | | | | 2 | | | | | | gestuit op verharding, beton? |